



TORGY

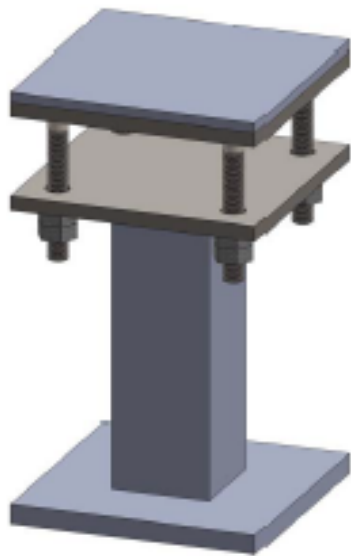
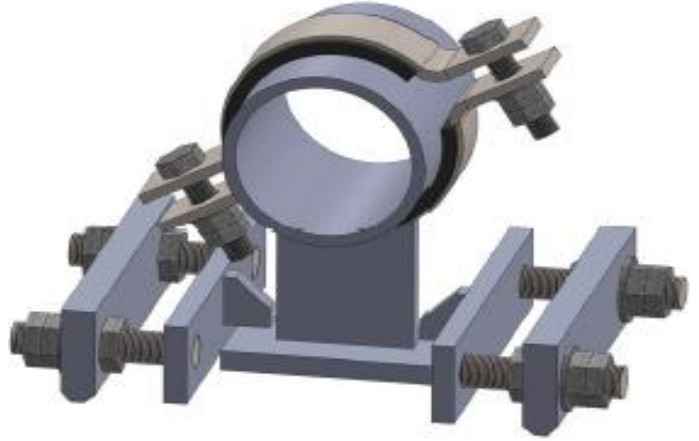
ADJUSTABLE UNITS

02

ADJUSTABLE UNITS

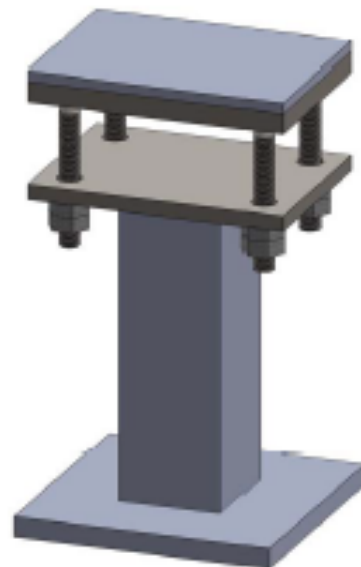
T-AU-998

**SPECIAL ADJUSTABLE LINE
GUIDE / HOLD DOWN**



T-AU-001

**SQUARE
ADJUSTABLE UNITS**



T-AU-002

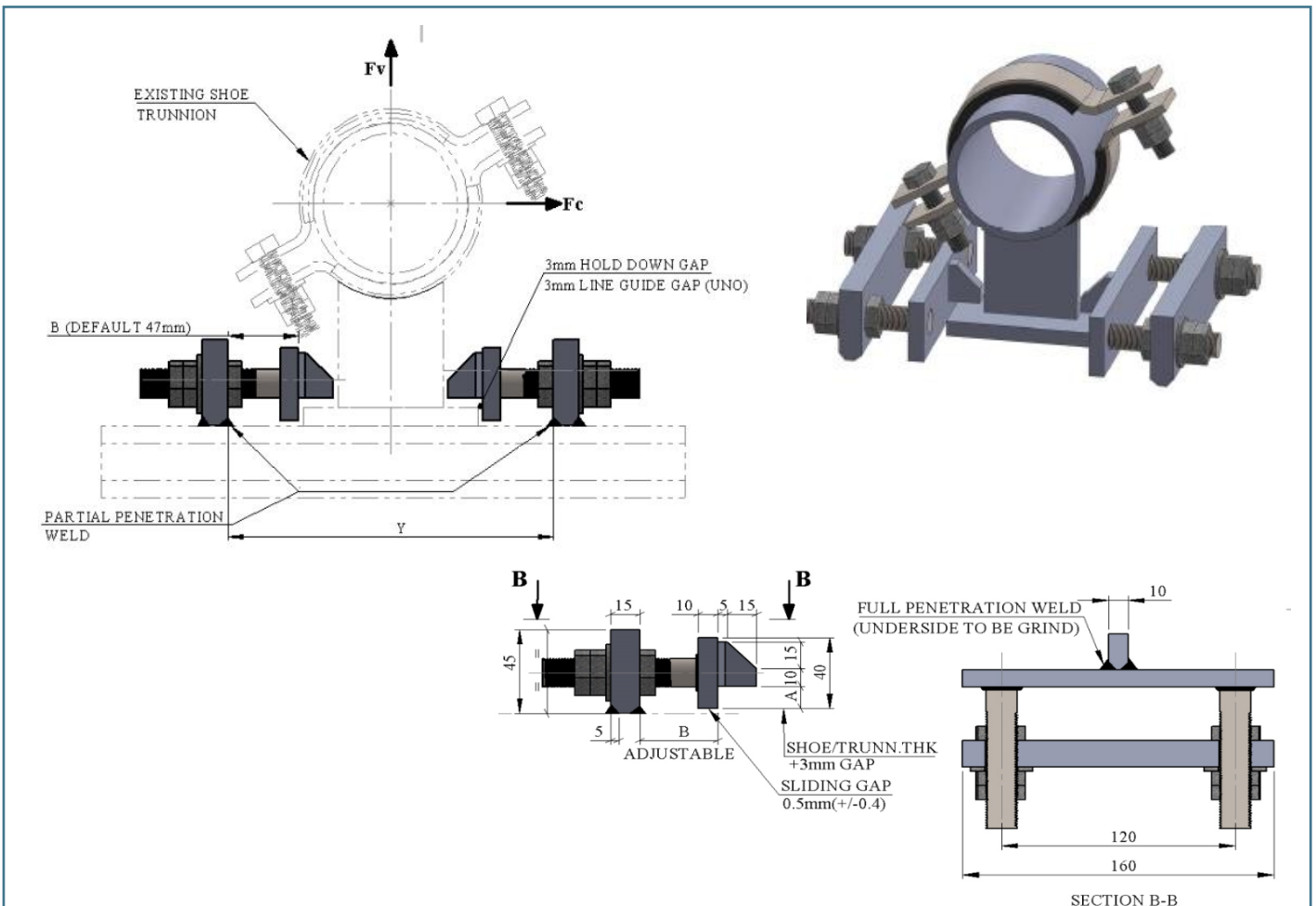
**RECTANGULAR
ADJUSTABLE UNITS**

AU-998
SPECIAL ADJUSTABLE LINE GUIDE / HOLD DOWN

TYPICAL PART NUMBER	AVAILABLE MATERIAL SHORT CODE	STD DETAIL TEMPERATURE LIMITATION	
		MAX. DESIGN TEMP	MIN. DESIGN TEMP
T-AU-998-000A-SS	SS	N/A	(-) 105 °C
T-AU-998-000A-LD	LD	N/A	(-) 46 °C

TYPE	BOLTING INFORMATION	A	MAX. ULS (kN)		MAX. BLAST (kN)		WEIGHTS (in kg)
			Fv	Fc	Fv	Fc	
T-AU-998-000A	2 OFF M16 STUDBOLTS x 100mm LONG WITH TRIPPLE NUTS	12,5mm	11,5	15	28,5	35	3
T-AU-998-000B	2 OFF M16 STUDBOLTS x 100mm LONG WITH TRIPPLE NUTS	17,5mm	11,5	22	28,5	51	3

For material specification see pipe support work Instruction.
 All Welds to be a = 0.7 x plate thickness, but max 4 mm CFW (U.N.O).
 Std. type includes all bolts , plain washers and Tripple nuts (to be ANSI A4-80SS).
 Maximum ULS and Blast is Load Capacity set for both SS and LD Type.



AU-001
SQUARE ADJUSTABLE UNIT

TYPICAL PART NUMBER	AVAILABLE MATERIAL SHORT CODE	STD DETAIL TEMPERATURE LIMITATION	
		MAX. DESIGN TEMP	MIN. DESIGN TEMP
T-AU-001-000A-SS	SS	N/A	N/A
T-AU-001-000A-CS	CS	N/A	N/A

TYPE	LINE SIZE		ITEM 1: LOWER PLATE			BOLT CTRS. C	SET BOLTS SIZE x LENGTH		HOLE DIA. mm	INST. HEIGHT I	MAX. GUIDE FORCE (kN)		WEIGHTS (in kg)	
	PIPE OD x WT	RHS TYPE	F	G	T		E	Y			CS	SS	CS	SS
T-AU-001-000A	60.3 x 3.91	RHS 60 x 60 x 5	150	150	15	90	M16	130	18	75	5.2	3	5	6.1
T-AU-001-000B	114.3 x 6.02	RHS 100 x 100 x 6	200	200	15	130	M20	130	22	80	9.8	5.8	9	11
T-AU-001-000C	168.3 x 7.11	RHS 150 x 150 x 6	250	250	15	180	M20	130	22	80	9.8	5.8	11	15
T-AU-001-000D	219.1 x 6.35	RHS 200 x 200 x 10	300	300	20	230	M24	160	26	100	14	8.2	29	30.5
T-AU-001-000E	273.1 x 6.35	RHS 250 x 250 x 10	350	350	20	270	M24	160	26	100	14	8.2	39	40
T-AU-001-000F	323.9 x 6.35	RHS 300 x 300 x 10	400	400	20	310	M24	160	26	100	14	8.2	51	52
T-AU-001-000G	355.6 x 7.92	RHS 300 x 300 x 10	450	450	20	340	M24	160	26	100	14	8.2	64	65
T-AU-001-000H	406.4 x 7.92	RHS 300 x 300 x 10	500	500	20	380	M30	170	33	100	26	15.3	80	85
T-AU-001-000I	452 x 7.92	RHS 300 x 300 x 10	550	550	20	420	M30	170	33	110	26	15.3	96	97
T-AU-001-000J	508 x 9.53	RHS 300 x 300 x 10	600	600	20	470	M30	170	33	110	26	15.3	114	116

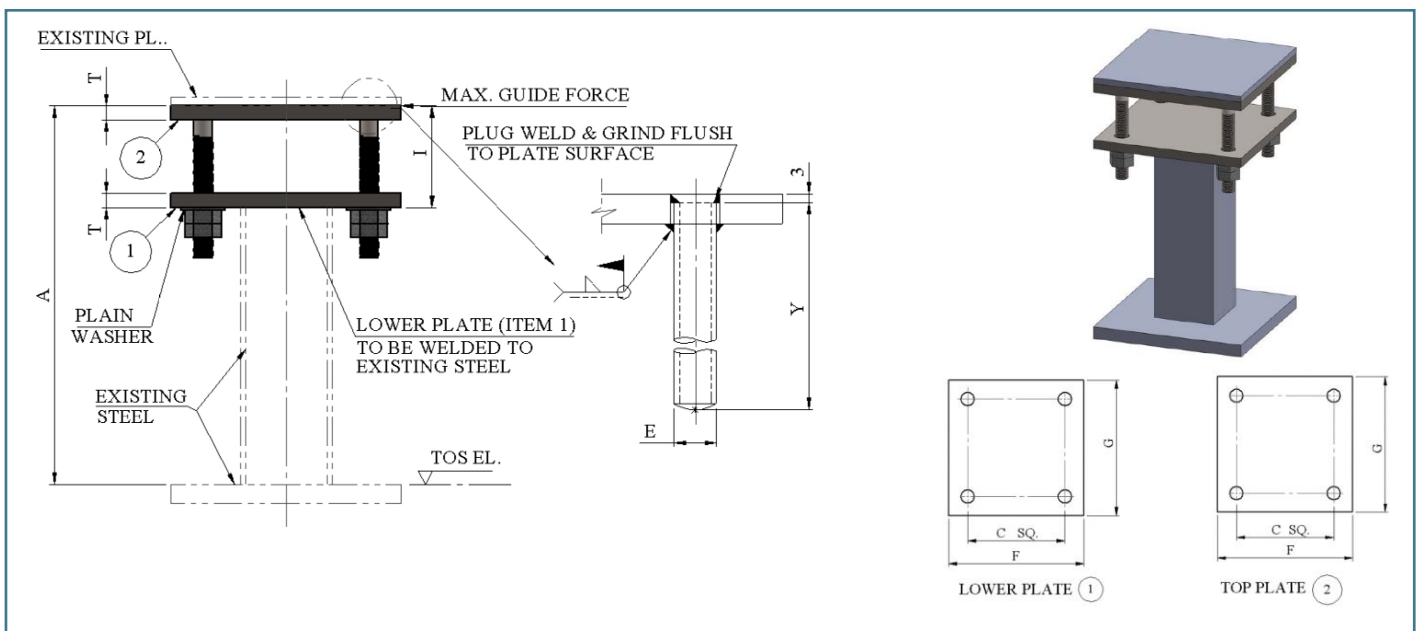
All Welds to be a = 0.7 x Plate Thickness, but max 4 mm CFW.

Minimum Dimension A = DIM Y + 53mm.

Top Plate to have Same Size as the Lower Plate.

Bolt Quality to be ANSI A4-80 SS (SS DETAIL) and ASTM A 193 Grade B7 (CS Detail).

Std. Type includes all bolts , plain washers and double nuts . Bolts to have a minimum overlength of 3 Threads.



AU-002
RECTANGULAR ADJUSTABLE UNIT

TYPICAL PART NUMBER	AVAILABLE MATERIAL SHORT CODE	STD DETAIL TEMPERATURE LIMITATION	
		MAX. DESIGN TEMP	MIN. DESIGN TEMP
T-AU-002-000A-SS	SS	N/A	N/A
T-AU-002-000A-CS	CS	N/A	N/A

TYPE	ITEM 1 : LOWER PLATE			BOLT CTRS.		SET BOLTS SIZE x LENGTH		HOLE DIA. mm	INSTALLED HEIGHT I	MAX. GUIDE FORCE (kN)		WEIGHTS in kg	
	F	G	T	C	D	E	Y			CS	SS	CS	SS
AU-002-000A	250	180	20	190	120	M20	160	22	100	9.8	5.8	14	14.5
AU-002-000B	290	180	20	230	120	M24	160	26	100	14	8.2	17	17.5
AU-002-000C	350	180	20	290	120	M24	160	26	100	14	8.2	20	22
AU-002-000D	400	180	20	340	120	M24	160	26	100	14	8.2	23	25.5

All Welds to be a = 0.7 x Plate Thickness, but max 4 mm CFW.

Minimum Dimension A = DIM Y + 53mm.

Top Plate to have Same Size as the Lower Plate.

Bolt Quality to be ANSI A4-80SS (SS DETAIL) and ASTM A 193 Grade B7 (CS Detail).

Std. Type includes all bolts , plain washers and double nuts . Bolts to have a minimum overlength of 3 Thread.

