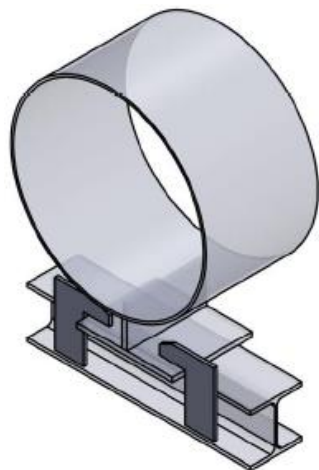
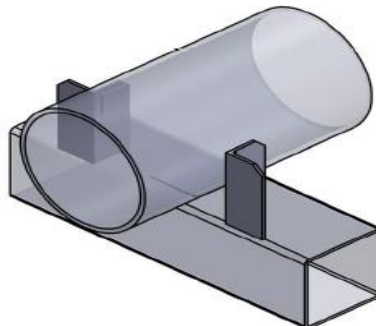
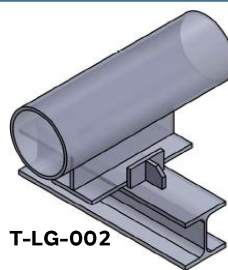
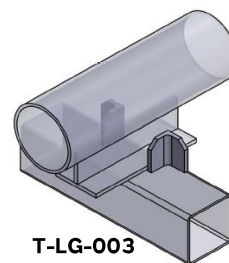
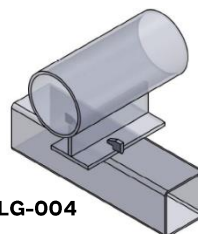
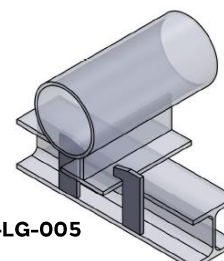
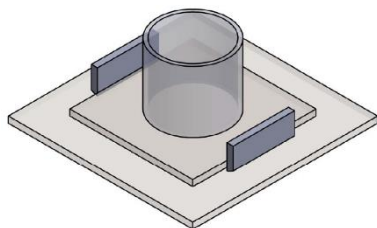
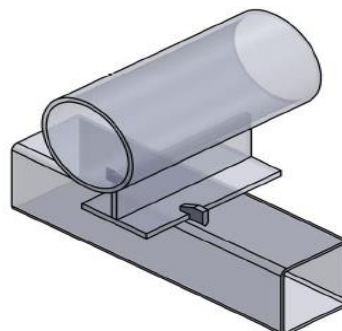




TORGY

WELDED SUPPORT GUIDES

04

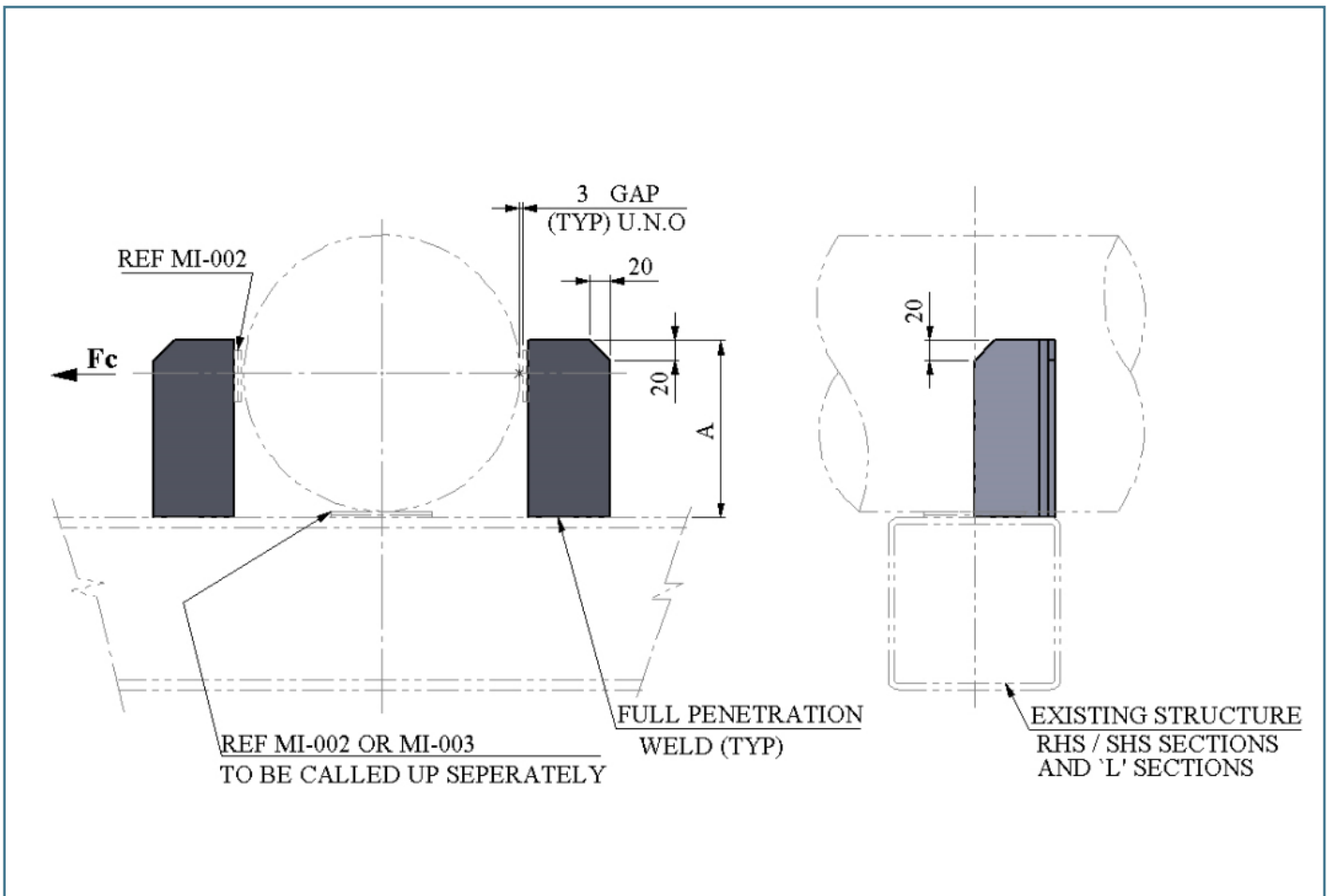
WELDED LINE GUIDES
T-LG-001
**WELDED LINE GUIDE FOR CS,SS
& ALLOY LINES 2" – 10"**

T-LG-006
**WELDED LINE GUIDE / HOLD DOWN
(HEAVY DUTY)**

T-LG-002
**WELDED LINE GUIDE
50-1200 mm / 2" -48"**

T-LG-003
**WELDED LINE GUIDE
50-1200 mm / 2" -48"**

T-LG-004
**WELDED LINE GUIDE / HOLD
DOWN WITH 3mm GAPS**

T-LG-005
**WELDED LINE GUIDE / HOLD
DOWN VARIABLE GAPS**

T-LG-007
**GUIDE FOR POST
BASE PLATES**

T-LG-008
**WELDED LINE GUIDE / HOLD DOWN
1mm GAP**

LG-001	WELDED LINE GUIDE FOR CS, SS & ALLOY LINES 50 – 250MM / 2” – 10”
---------------	---

TYPICAL PART NUMBER	AVAILABLE MATERIAL SHORT CODE	STD DETAIL TEMPERATURE LIMITATION	
		MAX. DESIGN TEMP	MIN. DESIGN TEMP.
T-LG-001-(DN)-CS	CS	N/A	N/A
T-LG-001-(DN)-SS	SS	N/A	N/A

TYPE	LINE SIZE			DESCRIPTION	A	MAX. LOADS Fc (kN)		INSULATING PAD	WEIGHTS (in kg)	
	DN (mm)	NPS in (inch)	NPS in (mm)			CS	SS		CS	SS
T-LG-001-0050	DN 50	2"	60.3	L60x60x6	65	23	13.5	MI-002-000A	0.68	0.72
T-LG-001-0080	DN 80	3"	88.9	L60x60x6	65	15	9		0.68	0.72
T-LG-001-0100	DN 100	4"	114.3	L60x60x6	100	12	7		1.10	1.12
T-LG-001-0125	DN 125	5"	141.3	L60x60x6	100	10	6		1.10	1.12
T-LG-001-0150	DN 150	6"	168.3	L60x60x6	150	8	5	MI-002-000B	1.5	1.52
T-LG-001-0200	DN 200	8"	219.1	L80x80x8	175	15	9		3.37	3.42
T-LG-001-0250	DN 250	10"	273.0	L80x80x8	175	12	7		3.37	3.42

All Welds to be a = 0.7 x WT, but max 4 mm CFW.
 Guide to be Site located and welded.

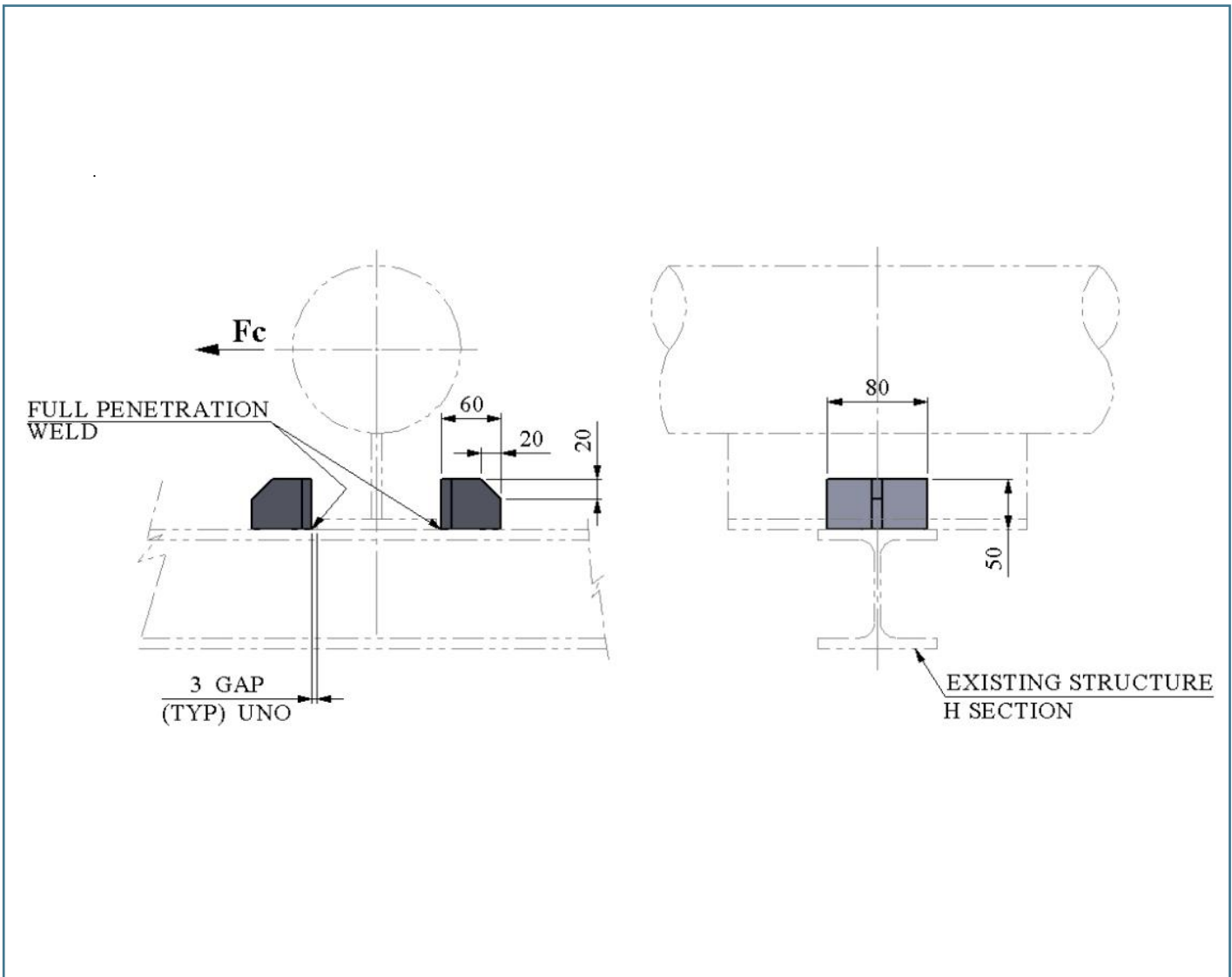


LG-002	WELDED LINE GUIDE, 50 - 1200MM / 2" - 48"
---------------	--

TYPICAL PART NUMBER	AVAILABLE MATERIAL SHORT CODE	STD DETAIL TEMPERATURE LIMITATION	
		MAX. DESIGN TEMP	MIN. DESIGN TEMP.
T-LG-002-000A-CS	CS	N/A	N/A
T-LG-002-000A-SS	SS	N/A	N/A

TYPE	LINE SIZE	DESCRIPTION	QTY	QTY	MAX. LOADS Fc (kN)		SUPPORT FUNCTION	WEIGHTS (in kg)	
					CS	SS		CS	SS
T-LG-002-000A	DN 50 - DN 1200 mm / 2" - 48"	10 THK PLATE	2	80	47	RS, LG	1.02	1.3	

All Welds to be a = 0.7 x WT, but max 4 mm CFW.
 Guide to be Site located and welded.
 Guide to be fabricated from 10mm thick plate.

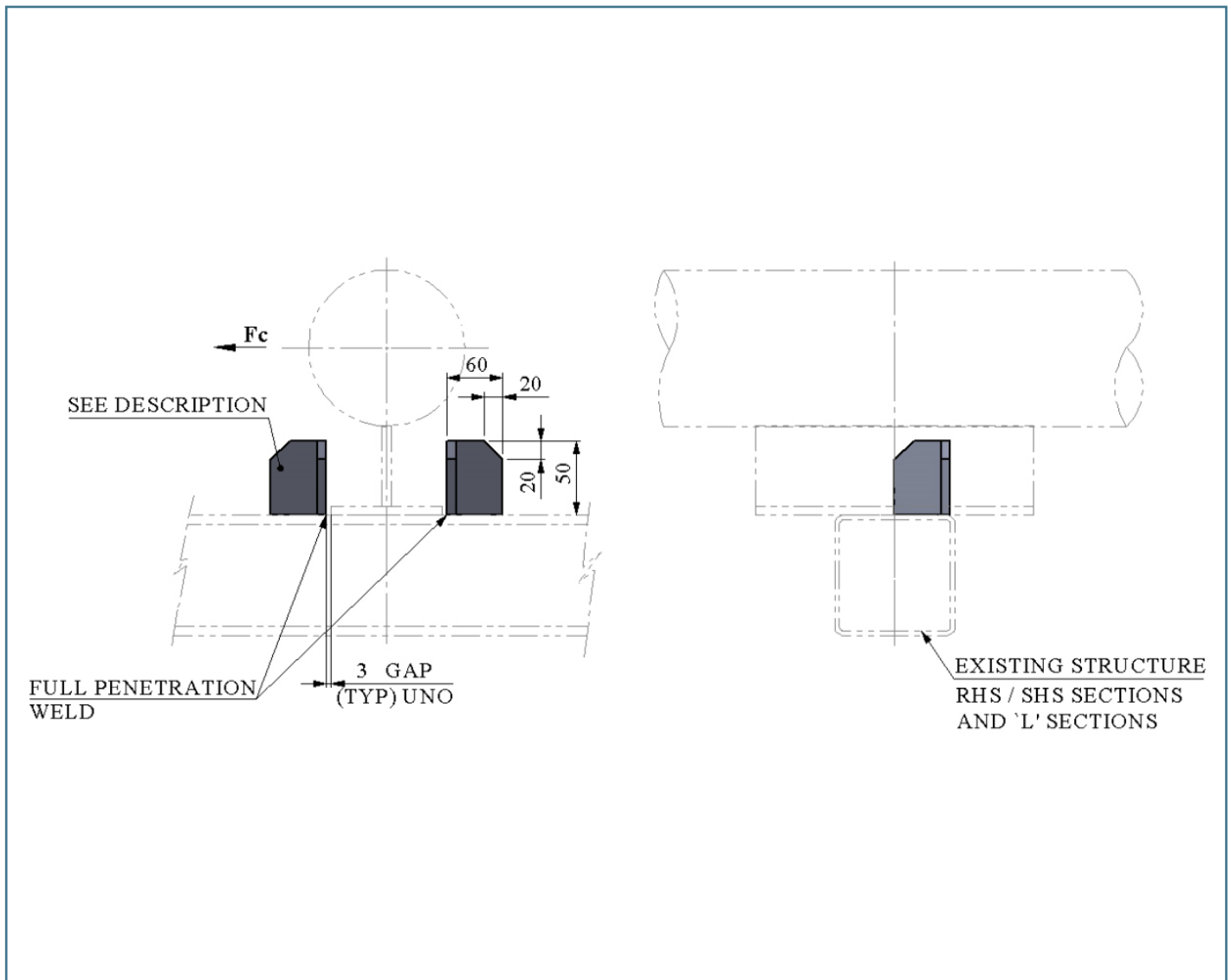


LG-003
WELDED LINE GUIDE, 50 – 1200MM / 2” – 48”

TYPICAL PART NUMBER	AVAILABLE MATERIAL SHORT CODE	STD DETAIL TEMPERATURE LIMITATION	
		MAX. DESIGN TEMP	MIN. DESIGN TEMP.
T-LG-003-000A-CS	CS	N/A	N/A
T-LG-003-000A-SS	SS	N/A	N/A

TYPE	LINE SIZE	DESCRIPTION	QTY	MAX. LOADS Fc (kN)		SUPPORT FUNCTION	WEIGHTS (in kg)	
				CS	SS		CS	SS
T-LG-003-000A	DN 50 - DN 1200 mm / 2" - 48"	L60x60x10	2	80	47	RS, LG	0.92	0.94

All Welds to be $a = 0.7 \times WT$, but max 4 mm CFW.
 Guide to be Site located and welded.
 Guide to be fabricated from 10mm thick plate or alternatively cut from L 100 x 10.



LG-004
WELDED LINE GUIDE / HOLD DOWN

TYPICAL PART NUMBER	AVAILABLE MATERIAL SHORT CODE	STD DETAIL TEMPERATURE LIMITATION	
		MAX. DESIGN TEMP	MIN. DESIGN TEMP.
T-LG-004-000A-CS	CS	N/A	N/A
T-LG-004-000A-SS	SS	N/A	N/A
T-LG-004-000A-LD	LD	N/A	N/A

TYPE	PLATE OR SHOE BASE PLATE THK	A	B	C	D	E	F	MAXIMUM LOADS kN						WEIGHTS (in kg)	
								CS		SS		LD		CS	SS
								Fc	Fv	Fc	Fv	Fc	Fv		
T-LG-004-000A	10	10	43	25	30	25	13	31	20	18	12	39	25	0.14	0.15
T-LG-004-000B	15	20	93	40	70	75	18	93	122	55	72	117	149	1.4	1.43
T-LG-004-000C	20	20	93	40	70	75	23	123	108	73	63	155	132	1.85	1.88
T-LG-004-000D	15	15	93	40	50	75	18	xx	xx	31	15	41	50	0.97	0.99
T-LG-004-000E	15	15	43	25	35	25	18	xx	xx	31	5	30	15	0.25	0.26

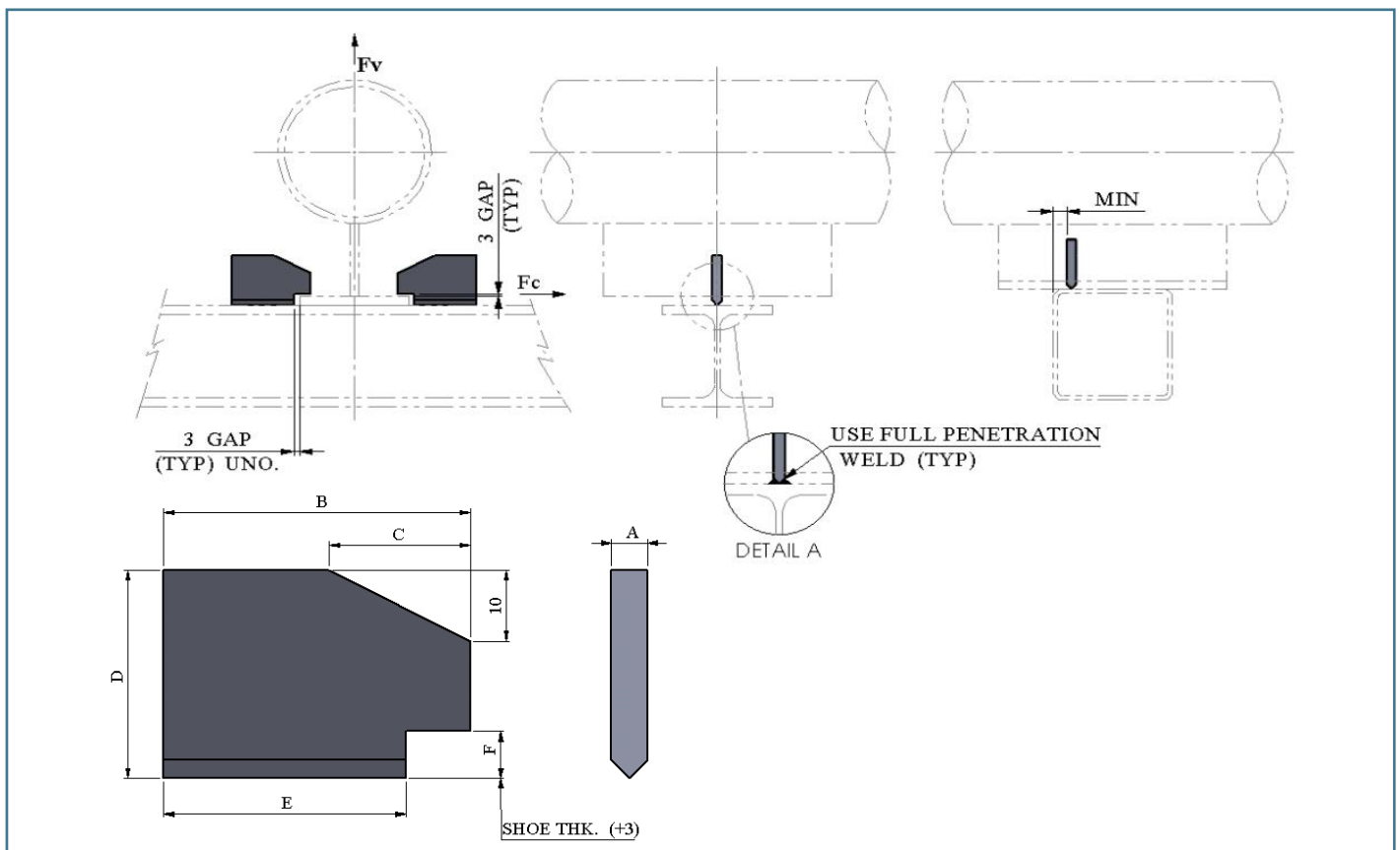
All Welds to be a = 0.7 x WT, but max 4 mm CFW.

Guide to be site located and welded.

Fv Loads are the total loads for the pair of Hold-Downs.

Fc value (Material) to be used is weakest material of Line Guide and used Shoe / Trunn. bottom plate.

For ALS (Blast) with Lean Duplex (LD) material a maximum load factor Of 1.35 can be used.



LG-005
WELDED LINE GUIDE / HOLD DOWN

TYPICAL PART NUMBER	AVAILABLE MATERIAL SHORT CODE	STD DETAIL TEMPERATURE LIMITATION	
		MAX. DESIGN TEMP	MIN. DESIGN TEMP.
T-LG-005-000A-CS	CS	N/A	N/A
T-LG-005-000A-SS	SS	N/A	N/A
T-LG-005-000A-LD	LD	N/A	N/A

TYPE	SECTION	MAXIMUM LOADS (kN)						WEIGHTS (in kg)	
		LD		CS		SS		CS	SS
		Fc	Fv	Fc	Fv	Fc	Fv		
T-LG-005-000A	PLATE 10mm	39	38	31	30	18	17	0.46	0.47

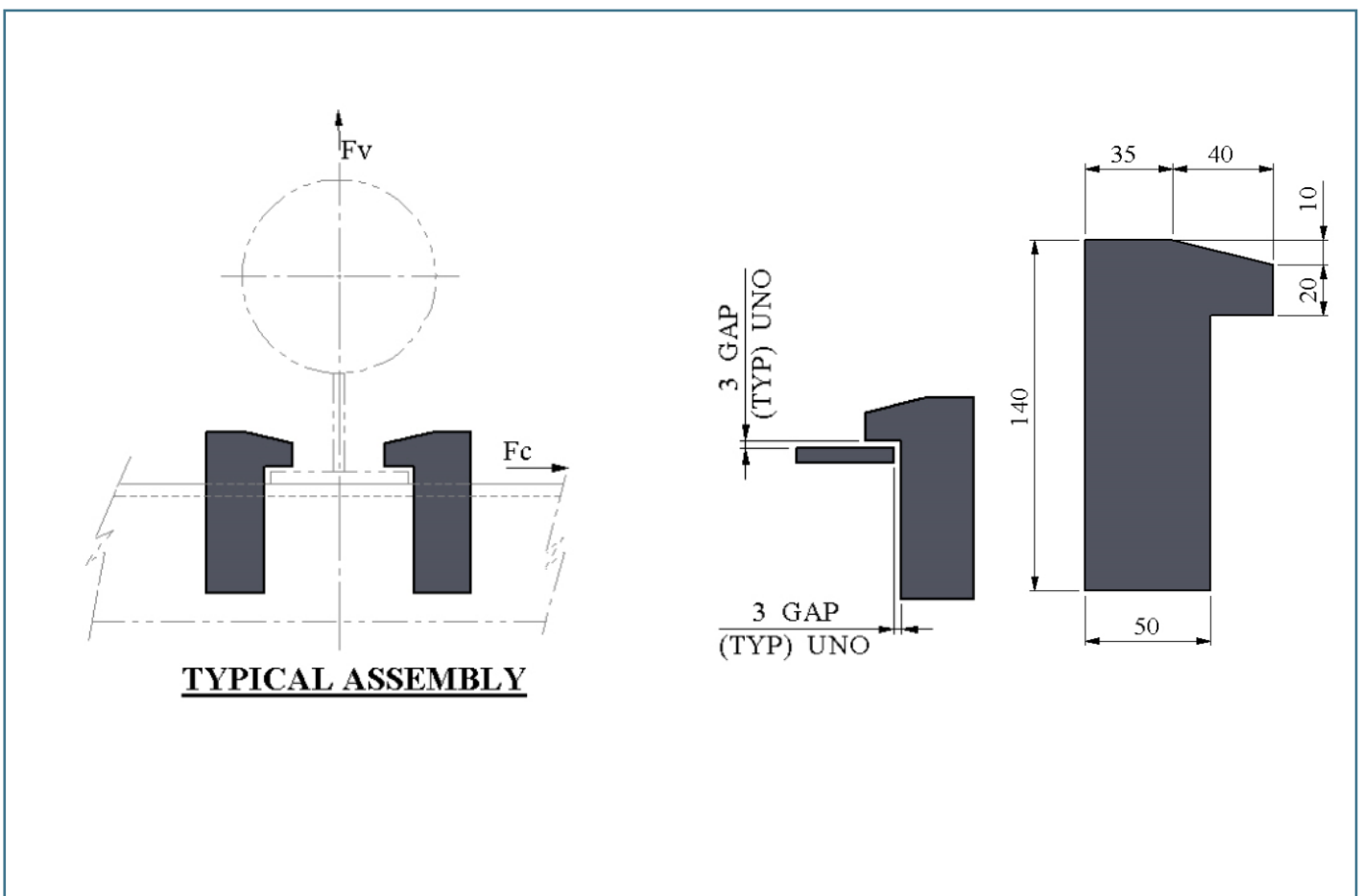
All Welds to be a = 0.7 x WT, but max 4 mm CFW.

Guide to be Site located and welded.

Fv Loads are the total loads for the pair of Hold-Downs.

Maximum load material value to be used is weakest material of Line Guide and used Shoe / Trunn. bottom plate.

For ALS (Blast) with Lean Duplex (LD) material a maximum load factor Of 1.35 can be used.



LG-006
WELDED LINE GUIDE / HOLD DOWN (HEAVY DUTY)

TYPICAL PART NUMBER	AVAILABLE MATERIAL SHORT CODE	STD DETAIL TEMPERATURE LIMITATION	
		MAX. DESIGN TEMP	MIN. DESIGN TEMP.
T-LG-006-000A-CS	CS	N/A	N/A
T-LG-006-000A-SS	SS	N/A	N/A
T-LG-006-000A-LD	LD	N/A	N/A

TYPE	SECTION	MAXIMUM LOADS (kN)						WEIGHTS (in kg)	
		LD		CS		SS		CS	SS
		Fc	Fv	Fc	Fv	Fc	Fv		
T-LG-006-000A	PLATE 20mm	78	107	62	85	36	50	6.8	6.9

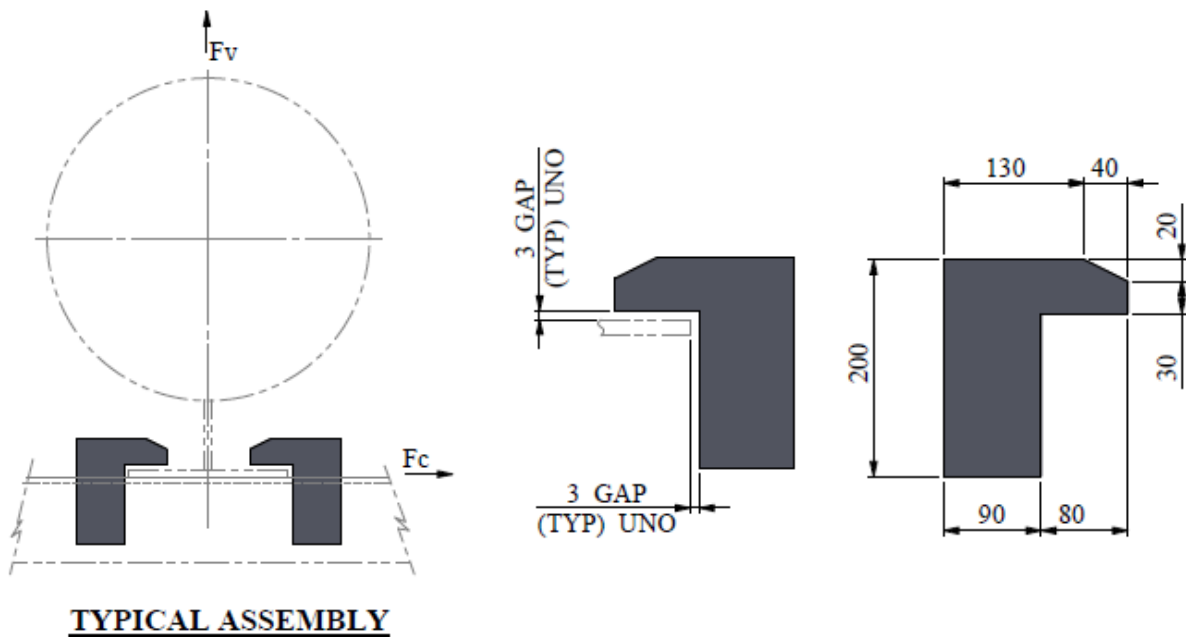
All Welds to be a = 0.7 x WT, but max 4 mm CFW.

Guide to be Site Located and Welded.

Fv Loads are the Total Loads for the Pair of Hold-Downs.

Maximum Load Material Value to be used is Weakest Material of Line Guide and Used Shoe / Trunn. Bottom Plate.

For ALS (Blast) with Lean Duplex (LD) material a maximum Load Factor of 1.35 can Be Used.

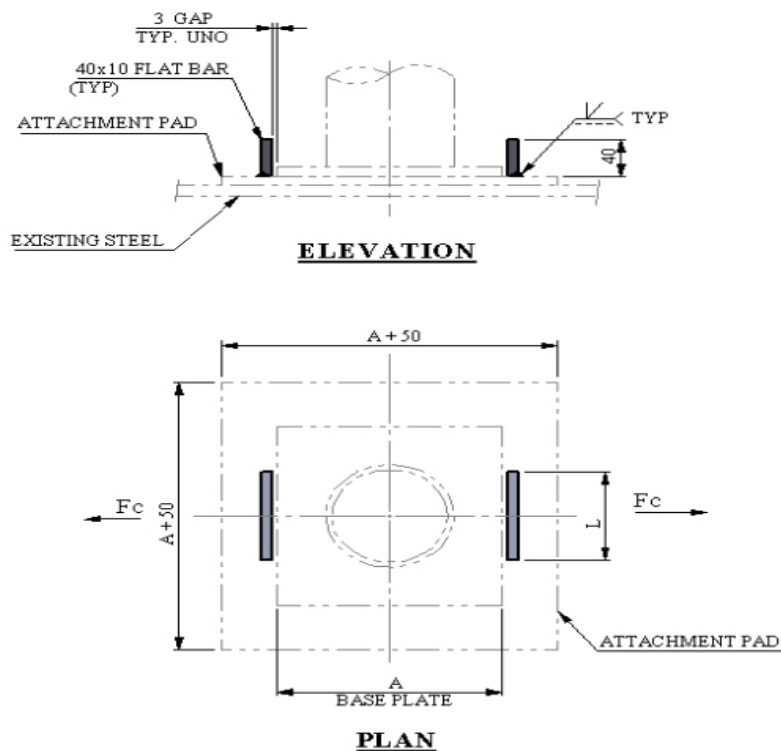


LG-007
GUIDE FOR POST BASE PLATES

TYPICAL PART NUMBER	AVAILABLE MATERIAL SHORT CODE	STD DETAIL TEMPERATURE LIMITATION	
		MAX. DESIGN TEMP	MIN. DESIGN TEMP.
T-LG-007-000A-CS	CS	N/A	N/A
T-LG-007-000A-SS	SS	N/A	N/A
T-LG-007-000A-LD	LD	N/A	N/A
T-LG-007-000A-AL	AL	N/A	N/A
T-LG-007-000A-TI	TI	N/A	N/A

TYPE	L	MAXIMUM LOAD F_c (kN)					SUPPORT FUNCTION	WEIGHTS (in kg)			
		CS	SS	LD	AL	Ti		CS	SS	AL	Ti
T-LG-007-000A	50	45	26.5	57	12.6	34.7	RS, LG (SEE NOTE)	0.31	0.32	0.11	0.18
T-LG-007-000B	100	90	53	114	25	69.3	RS, LG (SEE NOTE)	0.63	0.64	0.22	0.35
T-LG-007-000C	150	135	79.6	171	37.8	104	RS, LG (SEE NOTE)	0.94	0.96	0.33	0.53

Detail Only to be Used on Rest and Guide Combination. Lift Off not Allowed.
 For ALS (Blast) with Lean Duplex (LD) material a maximum Load Factor of 1.35 can Be Used.



LG-008
WELDED LINE GUIDE / HOLD DOWN 1MM GAP

TYPICAL PART NUMBER	AVAILABLE MATERIAL SHORT CODE	STD DETAIL TEMPERATURE LIMITATION	
		MAX. DESIGN TEMP	MIN. DESIGN TEMP.
T-LG-008-000A-CS	CS	N/A	N/A
T-LG-008-000A-SS	SS	N/A	N/A
T-LG-008-000A-LD	LD	N/A	N/A

TYPE	PLATE OR SHOE BASE PLATE THK	A	B	C	D	E	F	MAXIMUM LOADS (kN)						WEIGHTS (in kg)	
								CS		SS		LD		CS	SS
								Fc	Fv	Fc	Fv	Fc	Fv		
T-LG-008-000A	10	10	43	25	30	25	11	31	20	18	12	39	25	0.15	0.16
T-LG-008-000B	15	20	93	40	70	75	16	93	122	55	72	117	149	1.4	1.43
T-LG-008-000C	20	20	93	40	70	75	21	123	108	73	63	155	132	1.9	1.94

All Welds to be a = 0.7 x WT, but max 4 mm CFW.

Guide to be Site Located and Welded.

Fv Loads are the Total Loads for the Pair of Hold-Downs.

