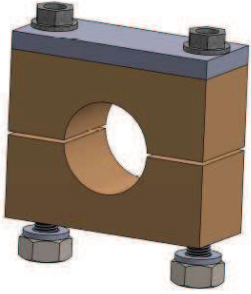
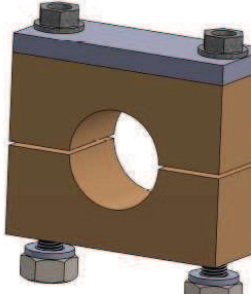
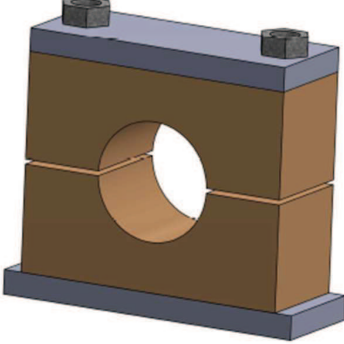
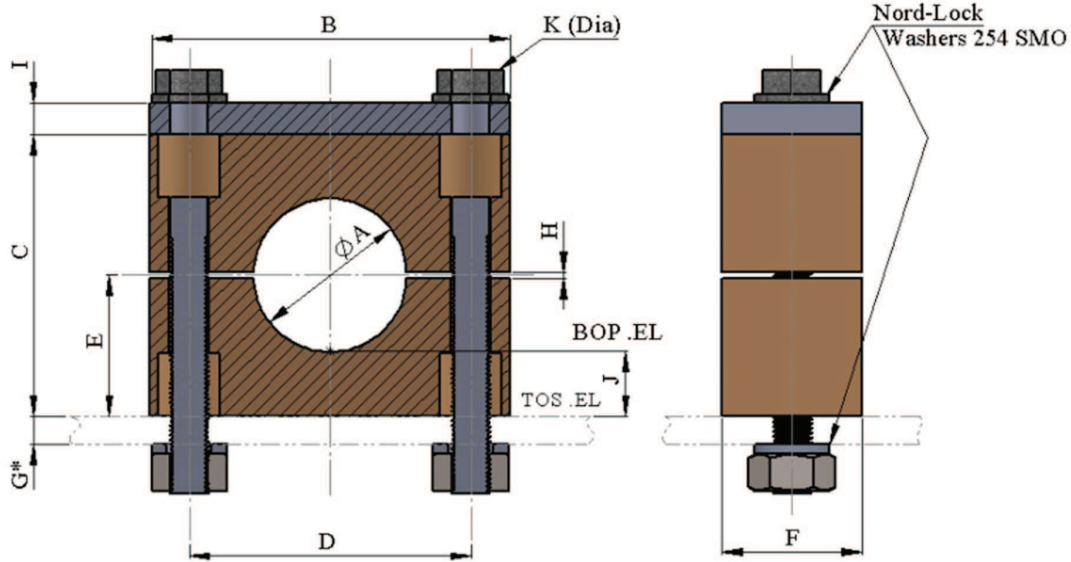


| | | | |
|------|--|---|--|
| 11 | HYDRAULIC CLAMPS | | |
| 11.1 | T-PC-042 PIPE CLAMP FOR HYDRAULIC PIPE (BOLTED THROUGH VERSION) |  | T-PC-040 PIPE CLAMP FOR HYDRAULIC PIPE |
| 11.2 | T-PC-043 PIPE CLAMP FOR HYDRAULIC TUBING (BOLTED THROUGH VERSION) |  | T-PC-041 PIPE CLAMP FOR HYDRAULIC TUBING |
| | | |  |

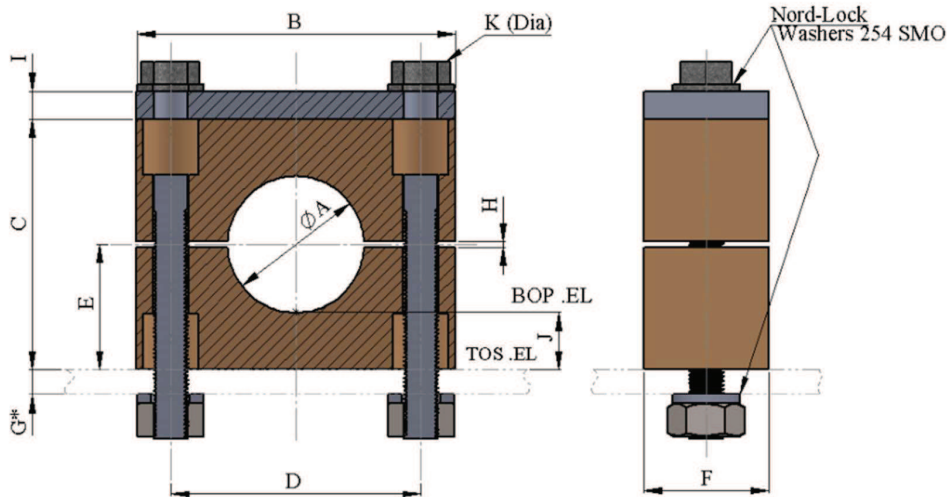
**11.1 PIPE CLAMP FOR HYDRAULIC PIPE
(BOLTED THROUGH VERSION)**
PC-042


| TYPICAL PART NUMBER | AVAILABLE MATERIAL SHORT CODE | STD DETAIL TEMPERATURE LIMITATION | |
|---------------------|-------------------------------|-----------------------------------|------------------|
| | | MAX. DESIGN TEMP | MIN. DESIGN TEMP |
| T-PC-042-(DN)-SS-A | SS | 90 °C | (-) 30 °C |
| T-PC-042-(DN)-SS-B | SS | 120 °C | (-) 46 °C |

| TYPE | LINE SIZE | | PIPE CLAMP DIMENSION | | | | | | | | | | WEIGHTS (in kg) | |
|---------------|-----------|---------------|----------------------|-----|-----|-----|------|-----|-----|---------|----|------|-----------------|------|
| | DN (mm) | NPS in (inch) | Pipe Dia. A | B | C | D | E | F | G* | H (min) | I | J | | K |
| T-PC-042-0015 | DN 15 | ½" | 21.3 | 70 | 48 | 45 | 24 | 30 | 25* | 0.6 | 8 | 13.4 | M10 | 0.3 |
| T-PC-042-0020 | DN 20 | ¾" | 26.9 | 70 | 48 | 45 | 24 | 30 | 25* | 0.6 | 8 | 10.6 | M10 | 0.3 |
| T-PC-042-0025 | DN 25 | 1" | 33.7 | 85 | 60 | 60 | 30 | 30 | 25* | 0.6 | 8 | 13.2 | M10 | 0.3 |
| T-PC-042-0030 | DN 30 | 1 ¼" | 42.2 | 115 | 89 | 90 | 44.5 | 45 | 25* | 2 | 10 | 23.4 | M12 | 0.7 |
| T-PC-042-0040 | DN 40 | 1 ½" | 48.3 | 115 | 89 | 90 | 44.5 | 45 | 25* | 2 | 10 | 20.4 | M12 | 0.7 |
| T-PC-042-0050 | DN 50 | 2" | 60.3 | 115 | 89 | 90 | 45.5 | 45 | 25* | 2 | 10 | 14.4 | M12 | 0.7 |
| T-PC-042-0065 | DN 65 | 2 ½" | 73 | 152 | 120 | 122 | 60 | 60 | 25* | 2 | 10 | 23.5 | M16 | 1.5 |
| T-PC-042-0080 | DN 80 | 3" | 88.9 | 152 | 120 | 122 | 60 | 60 | 25* | 2 | 10 | 15.6 | M16 | 1.5 |
| T-PC-042-0100 | DN 100 | 4" | 114.3 | 206 | 167 | 168 | 83.5 | 80 | 25* | 2 | 15 | 26.4 | M20 | 3.5 |
| T-PC-042-0125 | DN 125 | 5" | 141.3 | 251 | 200 | 205 | 100 | 80 | 25* | 3 | 15 | 29.4 | M24 | 5.6 |
| T-PC-042-0150 | DN 150 | 6" | 168.3 | 251 | 200 | 205 | 100 | 90 | 25* | 3 | 15 | 15.9 | M24 | 5.6 |
| T-PC-042-0200 | DN 200 | 8" | 219.1 | 336 | 270 | 265 | 135 | 120 | 25* | 3 | 25 | 25.5 | M30 | 14.4 |
| T-PC-042-0250 | DN 250 | 10" | 273 | 470 | 410 | 395 | 205 | 160 | 25* | 3 | 30 | 68.5 | M30 | 34.6 |

TYPE A:
Clamp Material: Polypropylene rifled inside, Top plate: Stainless steel.

TYPE B:
Clamp Material: Polyamide rifled Inside, Top Plate: Stainless steel.
Used with design temp. above +90 °C or below -30 °C.
2 off A4-80 bolts and nuts plus 4 off Nord – Lock washer in 254SMO material.
Note * : Dim G is to be considered as max. value before changing bolt lengths.

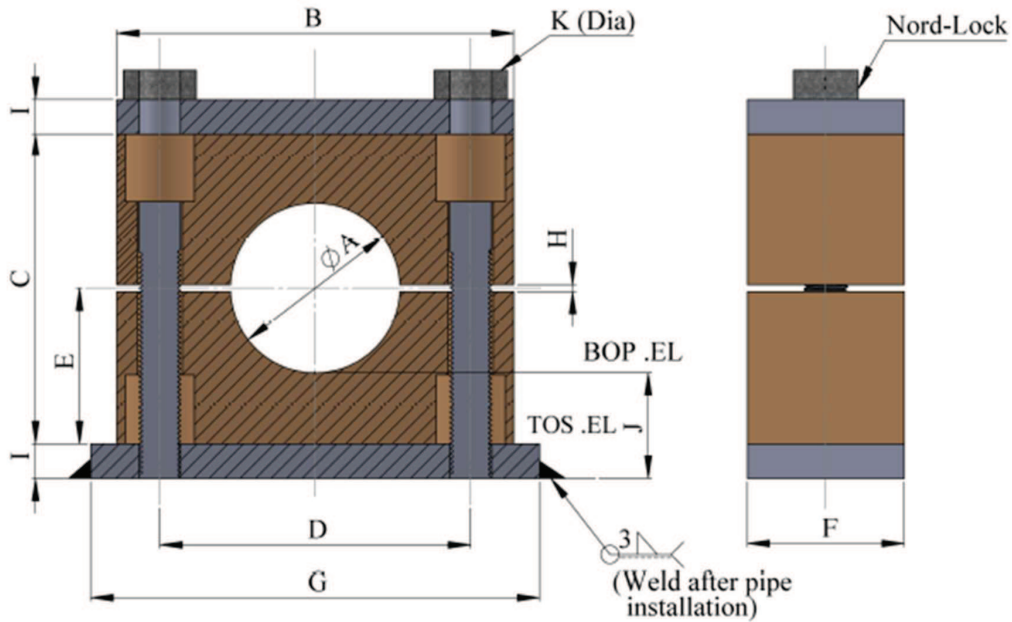
**11.2 PIPE CLAMP FOR HYDRAULIC TUBING
(BOLTED THROUGH VERSION)**
PC-043


| TYPICAL PART NUMBER | AVAILABLE MATERIAL SHORT CODE | STD DETAIL TEMPERATURE LIMITATION | |
|---------------------|-------------------------------|-----------------------------------|------------------|
| | | MAX. DESIGN TEMP | MIN. DESIGN TEMP |
| T-PC-043-(DN)-SS-A | SS | 90 °C | (-) 30 °C |
| T-PC-043-(DN)-SS-B | SS | 120 °C | (-) 46 °C |

| TYPE | TUBE SIZE | | PIPE CLAMP DIMENSION | | | | | | | | | | | WEIGHTS (in kg) |
|---------------|-----------|--------|----------------------|----|----|----|----|----|-----|---------|---|------|-----|-----------------|
| | mm | (inch) | Tube Dia. A | B | C | D | E | F | G* | H (min) | I | J | K | |
| T-PC-043-0006 | 6 | - | 6 | 55 | 32 | 33 | 16 | 30 | 25* | 0.6 | 8 | 13 | M10 | 0.24 |
| T-PC-043-0008 | 8 | - | 8 | 55 | 32 | 33 | 16 | 30 | 25* | 0.6 | 8 | 12 | M10 | 0.24 |
| T-PC-043-0010 | 10 | - | 10 | 55 | 32 | 33 | 16 | 30 | 25* | 0.6 | 8 | 11 | M10 | 0.24 |
| T-PC-043-0012 | 12 | - | 12 | 55 | 32 | 33 | 16 | 30 | 25* | 0.6 | 8 | 10 | M10 | 0.24 |
| T-PC-043-0015 | 15 | - | 15 | 55 | 32 | 33 | 16 | 30 | 25* | 0.6 | 8 | 8.5 | M10 | 0.24 |
| T-PC-043-0016 | 16 | - | 16 | 55 | 32 | 33 | 16 | 30 | 25* | 0.6 | 8 | 8 | M10 | 0.24 |
| T-PC-043-0018 | 18 | - | 18 | 55 | 32 | 33 | 16 | 30 | 25* | 0.6 | 8 | 7 | M10 | 0.24 |
| T-PC-043-0020 | 20 | - | 20 | 70 | 48 | 45 | 24 | 30 | 25* | 0.6 | 8 | 14 | M10 | 0.29 |
| T-PC-043-0022 | 22 | - | 22 | 70 | 48 | 45 | 24 | 30 | 25* | 0.6 | 8 | 13 | M10 | 0.29 |
| T-PC-043-0025 | 25 | - | 25 | 70 | 48 | 45 | 24 | 30 | 25* | 0.6 | 8 | 11.5 | M10 | 0.29 |
| T-PC-043-0028 | 28 | - | 28 | 70 | 48 | 45 | 24 | 30 | 25* | 0.6 | 8 | 10 | M10 | 0.29 |
| T-PC-043-0030 | 30 | - | 30 | 85 | 60 | 60 | 30 | 30 | 25* | 0.6 | 8 | 15 | M10 | 0.35 |
| T-PC-043-0035 | 35 | - | 35 | 85 | 60 | 60 | 30 | 30 | 25* | 0.6 | 8 | 12.5 | M10 | 0.35 |
| T-PC-043-0038 | 38 | - | 38 | 85 | 60 | 60 | 30 | 30 | 25* | 0.6 | 8 | 11 | M10 | 0.35 |
| T-PC-043-0042 | 42 | - | 42 | 85 | 60 | 60 | 30 | 30 | 25* | 0.6 | 8 | 9 | M10 | 0.35 |

TYPE A:
Clamp Material: Polypropylene rifled inside, Top Plate: Stainless steel.

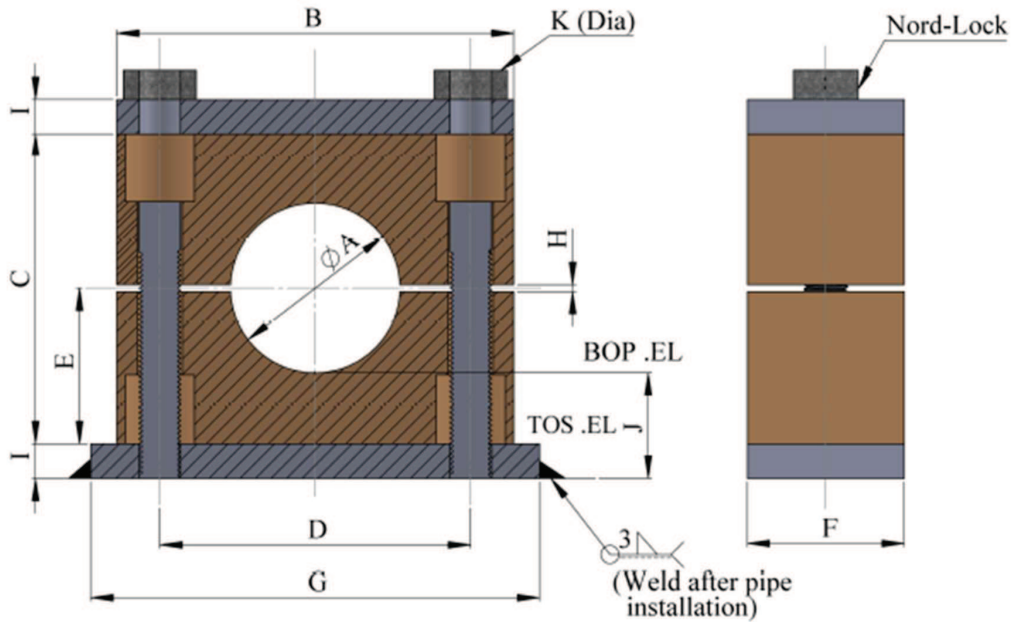
TYPE B:
Clamp Material: Polyamide rifled Inside, Top Plate: Stainless steel.
Used with design temp. above +90 °C or below -30 °C.
2 off A4-80 bolts and nuts plus 4 off Nord – Lock washer in 254SMO material.
Note * : Dim G is to be considered as max. value before changing bolt lengths.

11.2 PIPE CLAMP FOR HYDRAULIC PIPE
PC-040


| TYPICAL PART NUMBER | AVAILABLE MATERIAL SHORT CODE | STD DETAIL TEMPERATURE LIMITATION | |
|---------------------|-------------------------------|-----------------------------------|------------------|
| | | MAX. DESIGN TEMP | MIN. DESIGN TEMP |
| T-PC-040-(DN)-SS | SS | 100 °C | (-) 46 °C |

| TYPE | LINE SIZE | | PIPE CLAMP DIMENSION | | | | | | | | | | WEIGHTS (in kg) | |
|---------------|-----------|--------|----------------------|-----|-----|-----|-----|-----|------|---------|----|----|-----------------|------|
| | mm | (inch) | Pipe Dia. A | B | C | D | E | F | G* | H (min) | I | J | | K |
| T-PC-040-0015 | DN15 | 0.5" | 21.3 | 70 | 48 | 45 | 24 | 30 | 86* | 0.6 | 8 | 21 | M10 | 0.24 |
| T-PC-040-0020 | DN20 | 0.75" | 26.9 | 70 | 48 | 45 | 24 | 30 | 86* | 0.6 | 8 | 19 | M10 | 0.24 |
| T-PC-040-0025 | DN25 | 1" | 33.7 | 85 | 60 | 60 | 30 | 30 | 100* | 0.6 | 8 | 21 | M10 | 0.24 |
| T-PC-040-0030 | DN30 | 1.25" | 42 | 115 | 90 | 90 | 45 | 45 | 140* | 2 | 10 | 34 | M12 | 0.24 |
| T-PC-040-0040 | DN40 | 1.5" | 48.3 | 115 | 90 | 90 | 45 | 45 | 140* | 2 | 10 | 31 | M12 | 0.24 |
| T-PC-040-0050 | DN50 | 2" | 60.3 | 115 | 90 | 90 | 45 | 45 | 140* | 2 | 10 | 25 | M12 | 0.24 |
| T-PC-040-0080 | DN80 | 3" | 88.9 | 152 | 122 | 122 | 60 | 60 | 180* | 2 | 10 | 25 | M16 | 0.24 |
| T-PC-040-0100 | DN100 | 4" | 114.3 | 206 | 168 | 168 | 84 | 80 | 226* | 2 | 15 | 43 | M20 | 0.29 |
| T-PC-040-0125 | DN125 | 5" | 141 | 251 | 200 | 205 | 100 | 80 | 270* | 3 | 15 | 45 | M24 | 0.29 |
| T-PC-040-0150 | DN150 | 6" | 168.3 | 251 | 200 | 205 | 100 | 90 | 270* | 3 | 15 | 31 | M24 | 0.29 |
| T-PC-040-0200 | DN200 | 8" | 219 | 336 | 270 | 265 | 135 | 120 | 340* | 3 | 25 | 50 | M30 | 0.29 |
| T-PC-040-0250 | DN250 | 10" | 273 | 470 | 410 | 395 | 205 | 162 | 520* | 3 | 30 | 98 | M30 | 0.35 |

Clamp material to be Polypropylene, Stainless Steel Base Plate.

11.2 PIPE CLAMP FOR HYDRAULIC TUBING
PC-041


| TYPICAL PART NUMBER | AVAILABLE MATERIAL SHORT CODE | STD DETAIL TEMPERATURE LIMITATION | |
|---------------------|-------------------------------|-----------------------------------|------------------|
| | | MAX. DESIGN TEMP | MIN. DESIGN TEMP |
| T-PC-041-(DN)-SS | SS | 100 °C | (-) 46 °C |

| TYPE | LINE SIZE | | PIPE CLAMP DIMENSION | | | | | | | | | | | WEIGHTS (in kg) |
|---------------|-----------|--------|----------------------|----|----|----|----|----|------|---------|---|----|-----|-----------------|
| | mm | (inch) | Pipe Dia. A | B | C | D | E | F | G* | H (min) | I | J | K | |
| T-PC-041-0006 | 6 | - | 6 | 55 | 32 | 33 | 16 | 30 | 74 * | 0.6 | 8 | 21 | M10 | 0.24 |
| T-PC-041-0008 | 8 | - | 8 | 55 | 32 | 33 | 16 | 30 | 74* | 0.6 | 8 | 20 | M10 | 0.24 |
| T-PC-041-0010 | 10 | - | 10 | 55 | 32 | 33 | 16 | 30 | 74* | 0.6 | 8 | 19 | M10 | 0.24 |
| T-PC-041-0012 | 12 | - | 12 | 55 | 32 | 33 | 16 | 30 | 74* | 0.6 | 8 | 18 | M10 | 0.24 |
| T-PC-041-0015 | 15 | - | 15 | 55 | 32 | 33 | 16 | 30 | 74* | 0.6 | 8 | 16 | M10 | 0.24 |
| T-PC-041-0016 | 16 | - | 16 | 55 | 32 | 33 | 16 | 30 | 74* | 0.6 | 8 | 16 | M10 | 0.24 |
| T-PC-041-0018 | 18 | - | 18 | 55 | 32 | 33 | 16 | 30 | 74* | 0.6 | 8 | 15 | M10 | 0.24 |
| T-PC-041-0020 | 20 | - | 20 | 70 | 48 | 45 | 24 | 30 | 86* | 0.6 | 8 | 22 | M10 | 0.29 |
| T-PC-041-0022 | 22 | - | 22 | 70 | 48 | 45 | 24 | 30 | 86* | 0.6 | 8 | 21 | M10 | 0.29 |
| T-PC-041-0025 | 25 | - | 25 | 70 | 48 | 45 | 24 | 30 | 86* | 0.6 | 8 | 20 | M10 | 0.29 |
| T-PC-041-0030 | 30 | - | 30 | 85 | 60 | 60 | 30 | 30 | 100* | 0.6 | 8 | 23 | M10 | 0.29 |
| T-PC-040-0038 | 38 | - | 38 | 85 | 60 | 60 | 30 | 30 | 100* | 0.6 | 8 | 19 | M10 | 0.35 |

Clamp material to be Polypropylene, Stainless Steel Base Plate.