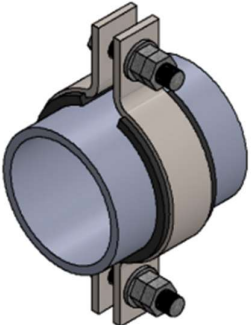
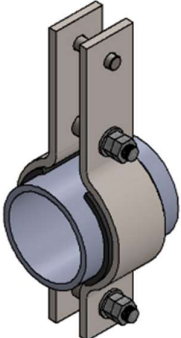
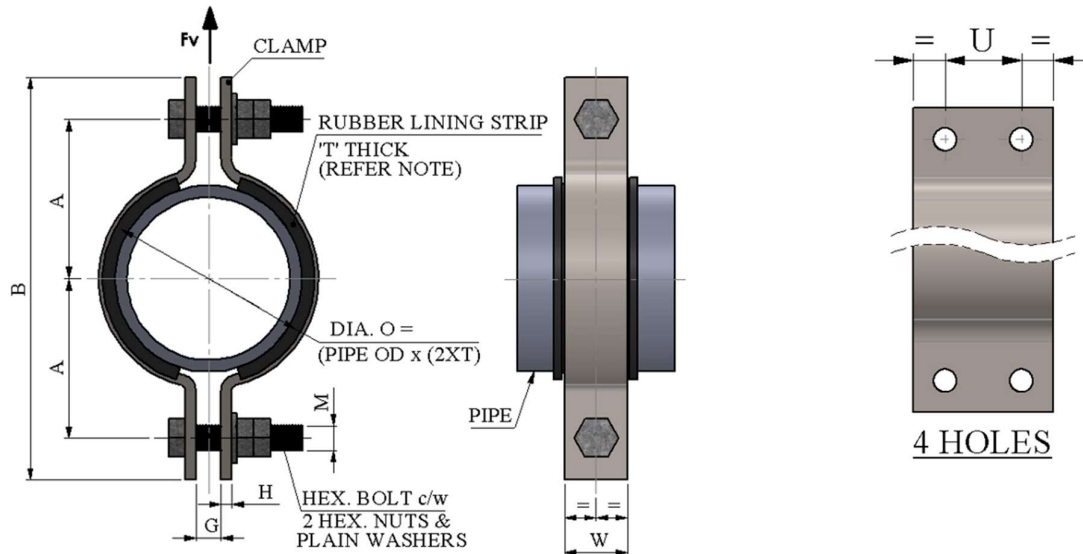


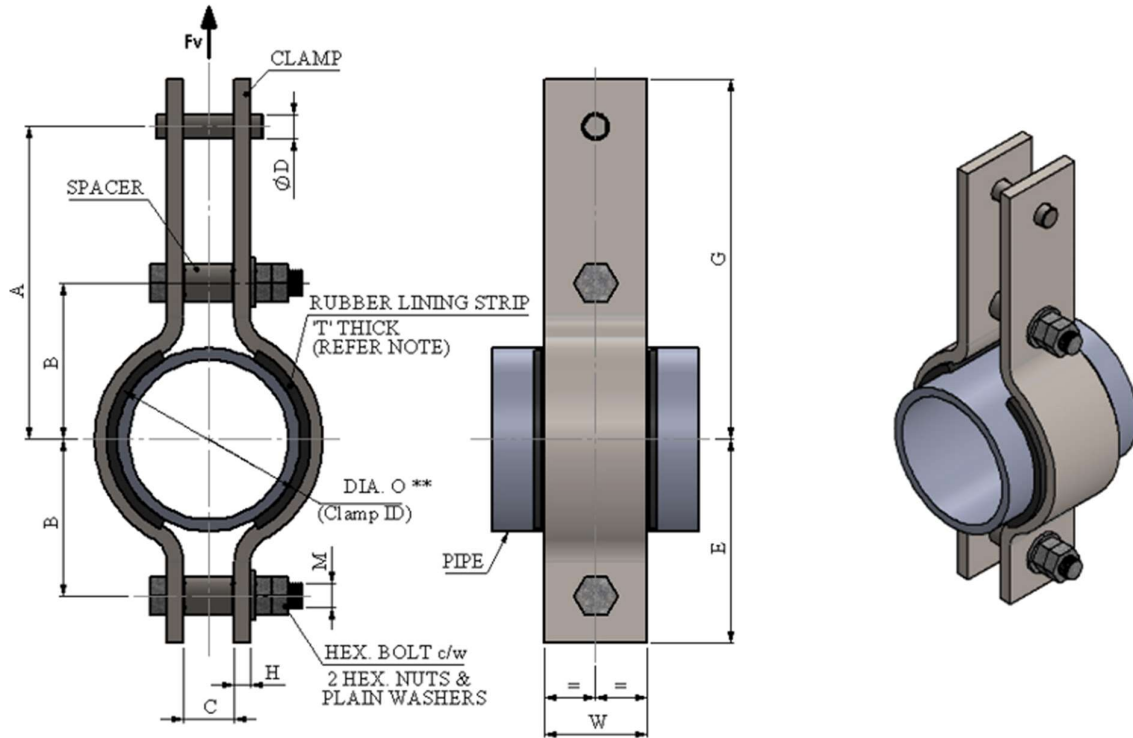
12	GRE/ GRP PIPE CLAMPS		
12.1	<p>T-PC-900 2 BOLTS (4 BOLTS) PIPE CLAMP FOR GRE / GRP LINES DN 50- DN 1400 mm / NPS 2'' - NPS 56''</p> 		
12.2	<p>T-PC-901 3 BOLTS PIPE CLAMP FOR GRP / GRE LINES DN 50 - DN 600 mm / NPS 2'' - NPS 24''</p> 		

12.1 2 BOLTS (4 BOLTS) PIPE CLAMP FOR GRE / GRP LINES
DN 50- DN 1400 mm / NPS 2" - NPS 56"
PC-900


TYPICAL PART NUMBER	AVAILABLE MATERIAL SHORT CODE	STD DETAIL TEMPERATURE LIMITATION	
		MAX. DESIGN TEMP	MIN. DESIGN TEMP
T-PC-900-(DN)-SS#D=XX	SS	150 °C	N/A
T-PC-900-(DN)-CS#D=XX	CS	150 °C	N/A

TYPE	LINE SIZE			PIPE CLAMP DIMENSION									BOLT SIZE	MAX. LOADS Fv (kN)	
	DN (mm)	NPS in (inch)	OD in (mm)	A	B	G	H	N	Dia. O	T	U	W		M*	SS
T-PC-900-0050	DN 50	2"	**	63	164	9	6	2	**	4	-	40	M12 x 60	2.69	4.55
T-PC-900-0080	DN 80	3"	**	82	202	9	6	2	**	4	-	40	M12 x 60	2.69	4.55
T-PC-900-0100	DN 100	4"	**	105	248	11	8	2	**	5	-	60	M16 x 80	2.69	4.55
T-PC-900-0150	DN 150	6"	**	134	318	11	8	2	**	5	-	60	M16 x 80	4.29	7.25
T-PC-900-0200	DN 200	8"	**	165	380	11	8	2	**	5	-	60	M16 x 80	4.29	7.25
T-PC-900-0250	DN 250	10"	**	197	458	14	8	2	**	6	-	60	M20 x 90	6.45	10.9
T-PC-900-0300	DN 300	12"	**	223	510	14	8	2	**	6	-	60	M20 x 90	6.45	10.9
T-PC-900-0350	DN 350	14"	**	248	568	14	8	2	**	6	-	80	M20 x 90	6.45	10.9
T-PC-900-0400	DN 400	16"	**	275	622	18	10	2	**	6	-	80	M24 x 100	6.45	10.9
T-PC-900-0450	DN 450	18"	**	312	696	18	10	2	**	6	-	80	M24 x 100	8.1	13.6
T-PC-900-0500	DN 500	20"	**	338	748	18	10	2	**	6	-	80	M24 x 100	8.1	13.6
T-PC-900-0600	DN 600	24"	**	402	894	25	15	2	**	6	-	90	M30 x 125	8.1	13.6
T-PC-900-0700	DN 700	28"	**	452	994	25	20	2	**	6	-	100	M30 x 140	8.1	13.6
T-PC-900-0750	DN 750	30"	**	477	1044	25	20	2	**	6	-	100	M30 x 140	8.1	13.6
T-PC-900-0800	DN 800	32"	**	504	1098	25	20	2	**	6	-	100	M30 x 140	8.1	13.6
T-PC-900-0900	DN 900	36"	**	570	1230	25	20	4	**	6	75	150	M30 x 140	8.1	13.6
T-PC-900-1100	DN 1100	44"	**	641	1372	25	20	4	**	6	75	150	M30 x 140	8.1	13.6
T-PC-900-1400	DN 1400	56"	**	796	1682	25	20	4	**	6	75	150	M30 x 140	8.1	13.6

Bolt hole dia. = Up to and including M24 = bolt dia. (M) + 2 mm & above M24 = bolt dia. (M) + 3mm
 Std. type includes all bolts (fully threaded with a min. over length of 3 threads) plain washers and double nuts.
 Rubber lining strip materials / bonding from manufacturers shall be subject to project approval.
 All surfaces to be thoroughly cleaned before bonding rubber liner to clamp.
 Dimensions marked with * are related to project GRE / GRP vendor pipe diameters and rubber lining thickness.

12.2 3 BOLTS PIPE CLAMP FOR GRP / GRE LINES
DN 50 - DN 600 mm / NPS 2" - NPS 24"
PC-901


TYPICAL PART NUMBER	AVAILABLE MATERIAL SHORT CODE	STD DETAIL TEMPERATURE LIMITATION	
		MAX. DESIGN TEMP	MIN. DESIGN TEMP
T-PC-901-(DN)-SS	SS	150 °C	N/A
T-PC-901-(DN)-CS	CS	150 °C	N/A

TYPE	LINE SIZE			PIPE CLAMP DIMENSION									BOLT SIZE	MAX. LOADS Fv (kN)		
	DN (mm)	NPS in (inch)	OD in (mm)	A	B	C	D	E	G	T	H	Dia. O		W	M	SS
T-PC-901-0050	DN 50	2"	**	134	63	25	12	85	156	4	6	**	60	M12 x 70	3.86	6.56
T-PC-901-0080	DN 80	3"	**	159	82	25	12	106	182	4	8	**	60	M12 x 70	5.77	9.81
T-PC-901-0100	DN 100	4"	**	170	105	25	16	134	199	5	10	**	120	M16 x 90	6.81	11.58
T-PC-901-0150	DN 150	6"	**	220	134	38	20	177	258	5	10	**	120	M20 x 105	8.08	13.34
T-PC-901-0200	DN 200	8"	**	245	165	38	20	205	283	5	10	**	120	M20 x 105	8.08	13.34
T-PC-901-0250	DN 250	10"	**	283	197	38	20	234	321	6	12	**	120	M20 x 110	9.88	16.80
T-PC-901-0300	DN 300	12"	**	308	223	38	20	261	346	6	12	**	120	M20 x 110	9.88	16.80
T-PC-901-0350	DN 350	14"	**	332	241	51	24	293	380	6	15	**	160	M24 x 140	15.65	26.60
T-PC-901-0400	DN 400	16"	**	354	267	51	24	321	401	6	15	**	160	M24 x 140	15.65	26.60
T-PC-901-0450	DN 450	18"	**	384	299	51	24	350	432	6	15	**	160	M24 x 140	15.65	26.60
T-PC-901-0500	DN 500	20"	**	405	325	51	24	385	458	6	20	**	160	M24 x 150	22.95	39.02
T-PC-901-0600	DN 600	24"	**	457	390	51	24	447	514	6	20	**	160	M24 x 150	28.69	48.78

Bolt hole dia. = up to and including M24 = bolt dia. (M) + 2 mm.
 Std. type includes all bolts (fully threaded with a min. over length of 3 threads) plain washers and double nuts.
 Rubber lining strip materials / bonding from manufacturers shall be subject to project approval.
 Clamp spacer from suitable material to suit bolt size length = C - 2mm
 All surfaces to be thoroughly cleaned before bonding rubber liner to clamp.
 Dimensions marked with * are related to project GRE / GRP vendor pipe diameters and rubber lining thickness.