






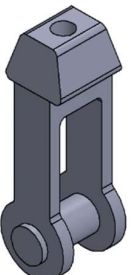

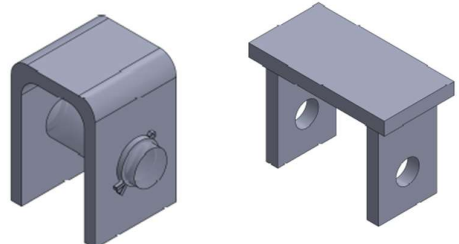
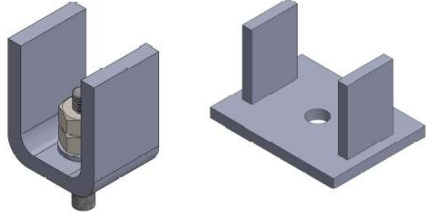


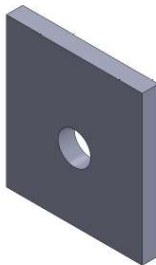
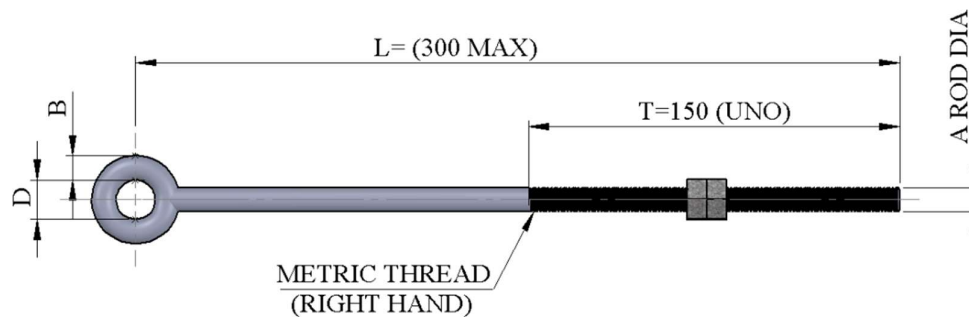


15	<b>STANDARD COMPONENTS</b>	
15.1	<b>T-SC-001</b> <b>SOLID FORGED EYE ROD ,</b> <b>RIGHT-HAND THREAD</b> 	<b>15.2</b> <b>T-SC-002</b> <b>SOLID FORGED EYE ROD ,</b> <b>LEFT-HAND THREAD</b> 
15.3	<b>T-SC-003</b> <b>THREADED ROD</b> <b>(LEFT- HAND &amp; RIGHT- HAND</b> <b>THREADS)</b> 	<b>15.4</b> <b>T-SC-004</b> <b>THREADED ROD</b> <b>( RIGHT- HAND THREADS )</b> 
15.5	<b>T-SC-005</b> <b>ALL THREADED ROD</b> <b>( RIGHT- HAND THREADS )</b> 	<b>15.6</b> <b>T-SC-006</b> <b>ALL THREADED ROD</b> <b>( LEFT- HAND THREADS )</b> 
15.7	<b>T-SC-007</b> <b>WELDLESS EYE NUTS</b> 	<b>15.8</b> <b>T-SC-008</b> <b>FORGED CLEVIS</b> 

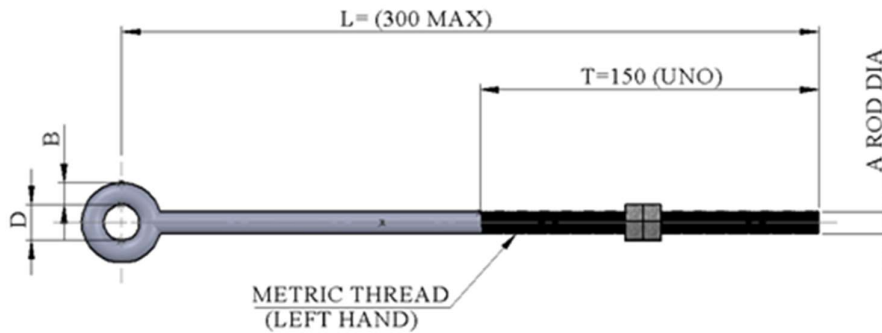
15	<b>STANDARD COMPONENTS</b>	
15.9	<b>T-SC-009 FORGED TURNBUCKLE</b> 	<b>15.10 T-SC-010 BEAM ATTACHMENT U-LUGS</b> 
15.11	<b>T-SC-011 BEAM ATTACHMENT U-LUGS</b> 	<b>15.12 T-SC-012 PIPE LUGS</b> 
15.13	<b>T-SC-013 PIPE LUGS</b> 	
15.14	<b>T-SC-014 WELDING LUG</b> 	

**15.1 SOLID FORGED EYE ROD - RIGHT HAND THREAD**
**SC-001**


TYPICAL PART NUMBER	AVAILABLE MATERIAL SHORT CODE	STD DETAIL TEMPERATURE LIMITATION	
		MAX. DESIGN TEMP	MIN. DESIGN TEMP.
T-SC-001-000A-CS	CS	120 °C	(-) 20 °C
T-SC-001-000A-SS	SS	150 °C	(-) 105 °C

TYPE	A	B	D	MAX. LOAD (kN)		WEIGHTS in kg	
				CS	SS	CS	SS
T-SC-001-000A	M10	7	16	3.8	2.28	0.16	0.16
T-SC-001-000B	M12	9	18	5.6	3.36	0.21	0.22
T-SC-001-000C	M16	12	22	10.4	6.24	0.35	0.36
T-SC-001-000D	M20	14	26	16.3	9.78	0.54	0.55
T-SC-001-000E	M24	17	30	23.6	14.16	0.71	0.72
T-SC-001-000F	M30	21	36	37.5	22.5		
T-SC-001-000G	M36	26	42	54.6	32.76		
T-SC-001-000H	M42	30	48	74.8	44.88		
T-SC-001-000I	M48	34	54	98.2	58.92		
T-SC-001-000J	M56	40	62	135.6	81.36		
T-SC-001-000K	M64	45	70	179	107.4		

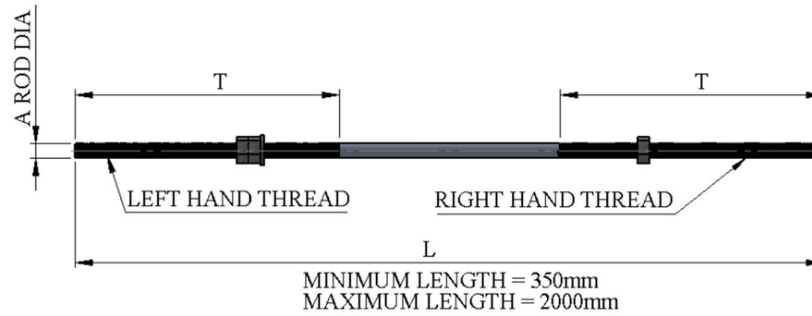
2 Nuts to be included.

**15.2 SOLID FORGED EYE ROD - LEFT HAND THREAD.**
**SC-002**


TYPICAL PART NUMBER	AVAILABLE MATERIAL SHORT CODE	STD DETAIL TEMPERATURE LIMITATION	
		MAX. DESIGN TEMP	MIN. DESIGN TEMP.
T-SC-002-000A-CS	CS	120 °C	(-) 46 °C
T-SC-002-000A-SS	SS	150 °C	(-) 105 °C

TYPE	A	B	D	MAX. LOAD (k N)		WEIGHTS in kg	
				CS	SS	CS	SS
T-SC-002-000A	M10	7	16	3.8	2.28	0.16	0.16
T-SC-002-000B	M12	9	18	5.6	3.36	0.21	0.22
T-SC-002-000C	M16	12	22	10.4	6.24	0.35	0.36
T-SC-002-000D	M20	14	26	16.3	9.78	0.54	0.55
T-SC-002-000E	M24	17	30	23.6	14.16	0.71	0.72
T-SC-002-000F	M30	21	36	37.5	22.5	1	1
T-SC-002-000G	M36	26	42	54.6	32.76		
T-SC-002-000H	M42	30	48	74.8	44.88		
T-SC-002-000I	M48	34	54	98.2	58.92		
T-SC-002-000J	M56	40	62	135.6	81.36		
T-SC-002-000K	M64	45	70	179	107.4		

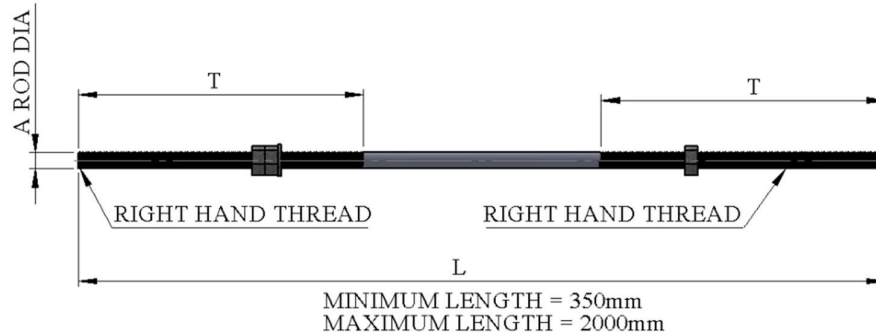
2 Nuts to be included.

**15.3 THREADED ROD (LEFT-HAND & RIGHT-HAND THREADS)**
**SC-003**


TYPICAL PART NUMBER	AVAILABLE MATERIAL SHORT CODE	STD DETAIL TEMPERATURE LIMITATION	
		MAX. DESIGN TEMP	MIN. DESIGN TEMP.
T-SC-003-000A-CS	CS	120 °C	(-) 46 °C
T-SC-003-000A-SS	SS	150 °C	(-) 105 °C

TYPE	A	T	MAX. LOAD (kN)		WEIGHTS / meter in kg	
			CS	SS	CS	SS
T-SC-003-000A	M10	175	3.8	2.28	0.53	0.54
T-SC-003-000B	M12	185	5.6	3.36	0.7	0.8
T-SC-003-000C	M16	190	10.4	6.24	1.3	1.4
T-SC-003-000D	M20	200	16.3	9.78	1.6	1.7
T-SC-003-000E	M24	205	23.6	14.16	2.5	2.6
T-SC-003-000F	M30	225	37.5	22.5	4.8	4.9
T-SC-003-000G	M36	235	54.6	32.76	7.0	7.2
T-SC-003-000H	M42	250	74.8	44.88	9.6	9.8
T-SC-003-000I	M48	265	98.2	58.92	12.7	12.92
T-SC-003-000J	M56	280	135.6	81.36	19.6	20.0
T-SC-003-000K	M64	300	179	107.4	25.9	26.4
T-SC-003-000L	M72	320	227.4	136.44	27.9	28.4

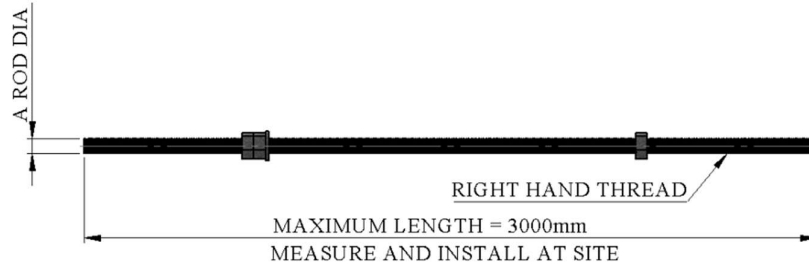
2 Left-hand thread nuts , 1 Right-hand thread nut and 1 washer to be included.

**15.4 THREADED ROD (RIGHT - HAND THREADS)**
**SC-004**


TYPICAL PART NUMBER	AVAILABLE MATERIAL SHORT CODE	STD DETAIL TEMPERATURE LIMITATION	
		MAX. DESIGN TEMP	MIN. DESIGN TEMP.
T-SC-004-000A-CS	CS	120 °C	(-) 46 °C
T-SC-004-000A-SS	SS	150 °C	(-) 105 °C

TYPE	A	T	MAX. LOAD (kN)		WEIGHTS /meter in kg	
			CS	SS	CS	SS
T-SC-004-000A	M10	175	3.8	2.28	0.53	0.54
T-SC-004-000B	M12	185	5.6	3.36	0.7	0.8
T-SC-004-000C	M16	190	10.4	6.24	1.3	1.4
T-SC-004-000D	M20	200	16.3	9.78	1.6	1.7
T-SC-004-000E	M24	205	23.6	14.16	2.5	2.6
T-SC-004-000F	M30	225	37.5	22.5	4.8	4.9
T-SC-004-000G	M36	235	54.6	32.76	7.0	7.2
T-SC-004-000H	M42	250	74.8	44.88	9.6	9.8
T-SC-004-000I	M48	265	98.2	58.92	12.7	12.92
T-SC-004-000J	M56	280	135.6	81.36	19.6	20.0
T-SC-004-000K	M64	300	179	107.4	25.9	26.4
T-SC-004-000L	M72	320	227.4	136.44	27.9	28.4

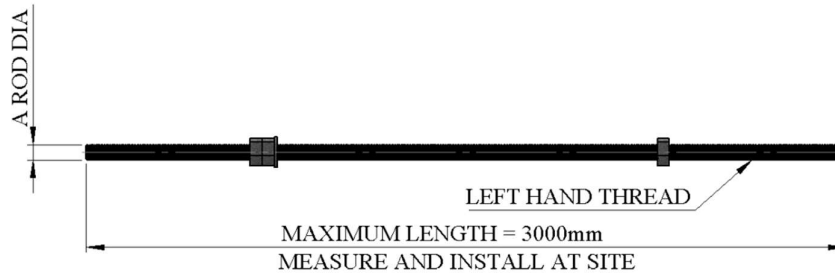
Use SC-005 when length is less than 350mm.  
3 Nuts and 1 washer to be included.

**15.5 ALL THREADED ROD – RIGHT –HAND THREAD**
**SC-005**


TYPICAL PART NUMBER	AVAILABLE MATERIAL SHORT CODE	STD DETAIL TEMPERATURE LIMITATION	
		MAX. DESIGN TEMP	MIN. DESIGN TEMP.
T-SC-005-000A-CS	CS	120 °C	(-) 46 °C
T-SC-005-000A-SS	SS	150 °C	(-) 105 °C

TYPE	A	MAX. LOAD (k N)		WEIGHTS / meter in kg	
		CS	SS	CS	SS
T-SC-005-000A	M10	3.8	2.28	0.53	0.54
T-SC-005-000B	M12	5.6	3.36	0.7	0.8
T-SC-005-000C	M16	10.4	6.24	1.3	1.4
T-SC-005-000D	M20	16.3	9.78	1.6	1.7
T-SC-005-000E	M24	23.6	14.16	2.5	2.6
T-SC-005-000F	M30	37.5	22.5	4.8	4.9
T-SC-005-000G	M36	54.6	32.76	7.0	7.2
T-SC-005-000H	M42	74.8	44.88	9.6	9.8
T-SC-005-000I	M48	98.2	58.92	12.7	12.92
T-SC-005-000J	M56	135.6	81.36	19.6	20.0
T-SC-005-000K	M64	179	107.4	25.9	26.4
T-SC-005-000L	M72	227.4	136.44	27.9	28.4

3 Nuts and 1 washer to be included.

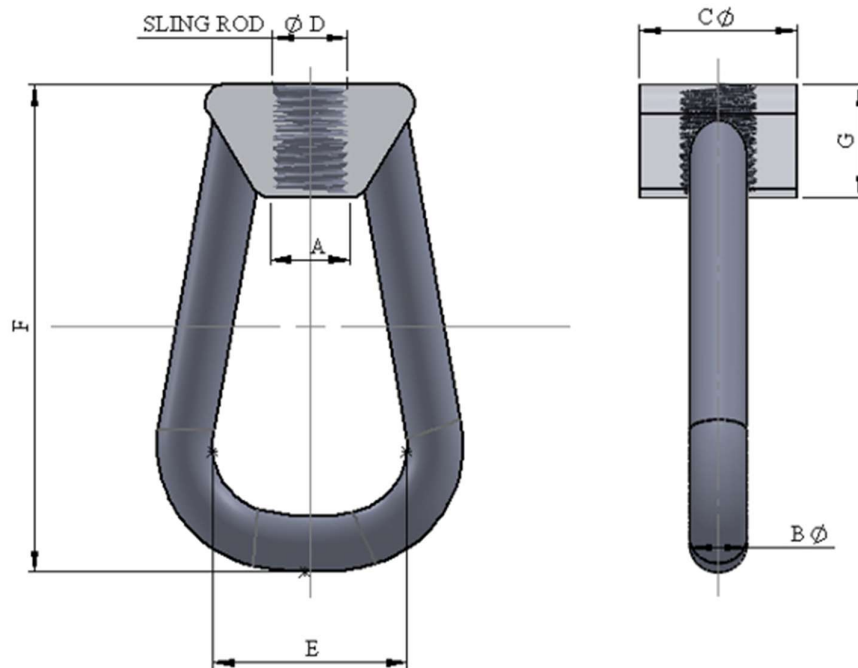
**15.6 ALL THREADED ROD – LEFT –HAND THREAD**
**SC-006**


TYPICAL PART NUMBER	AVAILABLE MATERIAL SHORT CODE	STD DETAIL TEMPERATURE LIMITATION	
		MAX. DESIGN TEMP	MIN. DESIGN TEMP.
T-SC-006-000A-CS	CS	120 °C	(-) 46 °C
T-SC-006-000A-SS	SS	150 °C	(-) 105 °C

TYPE	A	MAX. LOAD (kN)		WEIGHTS / meter in kg	
		CS	SS	CS	SS
T-SC-006-000A	M10	3.8	2.28	0.53	0.54
T-SC-006-000B	M12	5.6	3.36	0.7	0.8
T-SC-006-000C	M16	10.4	6.24	1.3	1.4
T-SC-006-000D	M20	16.3	9.78	1.6	1.7
T-SC-006-000E	M24	23.6	14.16	2.5	2.6
T-SC-006-000F	M30	37.5	22.5	4.8	4.9
T-SC-006-000G	M36	54.6	32.76	7.0	7.2
T-SC-006-000H	M42	74.8	44.88	9.6	9.8
T-SC-006-000I	M48	98.2	58.92	12.7	12.92
T-SC-006-000J	M56	135.6	81.36	19.6	20.0
T-SC-006-000K	M64	179	107.4	25.9	26.4
T-SC-006-000L	M72	227.4	136.44	27.9	28.4

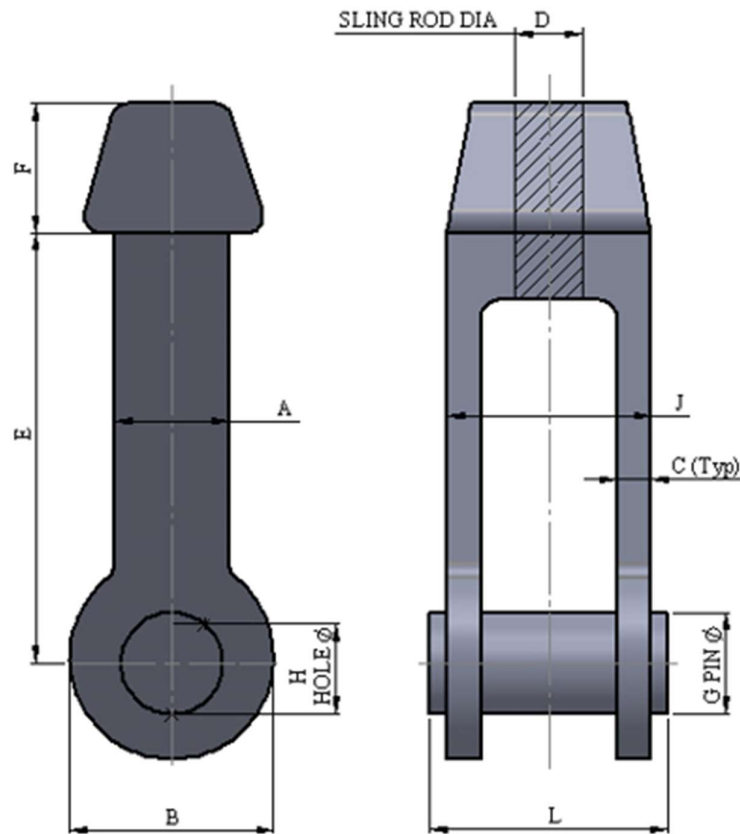
3 Left-hand thread nuts and 1 washer to be included.



**15.7 WELDLESS EYE NUTS**
**SC-007**


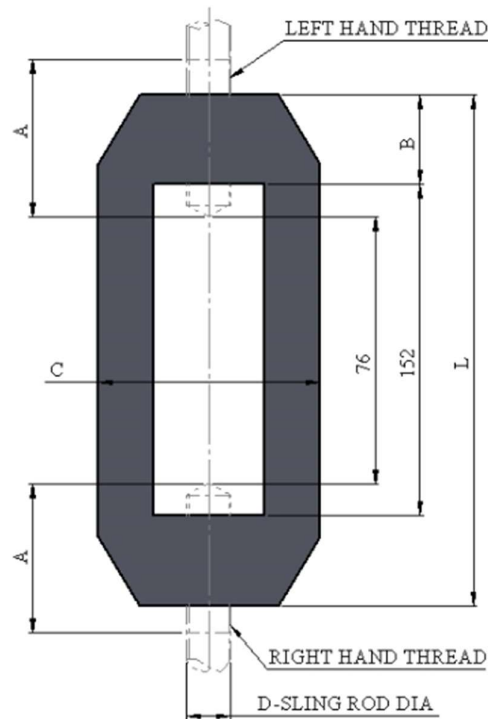
TYPICAL PART NUMBER	AVAILABLE MATERIAL SHORT CODE	STD DETAIL TEMPERATURE LIMITATION	
		MAX. DESIGN TEMP	MIN. DESIGN TEMP.
T-SC-007-000A-CS	CS	120 °C	(-) 46 °C
T-SC-007-000A-SS	SS	150 °C	(-) 105 °C

TYPE	SLING ROD Ø	A	B	C	E	F	G	MAX. LOAD (kN)		WEIGHTS in kg	
								CS	SS	CS	SS
T-SC-007-000A	M10	14	7	32	25	64	16	3.8	2.28	0.12	0.13
T-SC-007-000B	M12	16	9	38	30	73	18	5.6	3.36	0.3	0.4
T-SC-007-000C	M16	20	12	38	30	73	18	10.4	6.24	0.22	0.27
T-SC-007-000D	M20	24	14	45	40	102	25	16.3	9.78	0.41	0.42
T-SC-007-000E	M24	26	17	50	50	124	28	23.6	14.16	0.63	0.64
T-SC-007-000F	M30	34	21	70	75	146	38	37.5	22.5	1	1.2
T-SC-007-000G	M36	40	26	70	75	146	38	54.6	32.76	1.3	1.4
T-SC-007-000H	M42	46	30	80	100	180	45	74.8	44.88	2	2.2
T-SC-007-000I	M48	90	34	100	70	240	75	98.2	58.92	5	5.1
T-SC-007-000J	M56	100	36	100	80	270	80	135.6	81.36	6	6.2
T-SC-007-000K	M64	130	42	130	100	330	80	179	107.4	11	11.2
T-SC-007-000L	M72	130	47	130	100	330	80	227.4	136.44	12	12.3

**15.8 FORGED CLEVIS**
**SC-008**


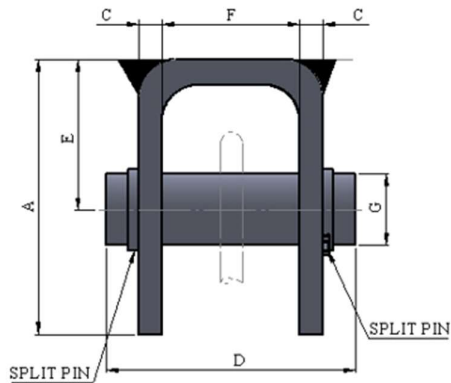
TYPICAL PART NUMBER	AVAILABLE MATERIAL SHORT CODE	STD DETAIL TEMPERATURE LIMITATION	
		MAX. DESIGN TEMP	MIN. DESIGN TEMP.
T-SC-008-000A-CS	CS	120 °C	(-) 46 °C
T-SC-008-000A-SS	SS	150 °C	(-) 105 °C

TYPE	SLING ROD Ø	A	B	C	E	F	G	H	J	L	MAX. LOAD (kN)		WEIGHTS in kg	
											CS	SS	CS	SS
T-SC-008-000A	M10	30	38	10	95	32	10	12	38	55	3.8	2.28	0.85	0.87
T-SC-008-000B	M12	30	38	10	95	32	12	14	38	55	5.6	3.36	0.87	0.89
T-SC-008-000C	M16	30	38	10	95	32	16	18	38	55	10.4	6.24	0.9	0.92
T-SC-008-000D	M20	30	63	10	102	32	20	22	50	60	16.3	9.78	0.99	1.1
T-SC-008-000E	M24	38	76	12	127	32	24	26	58	80	23.6	14.16	1	1.2
T-SC-008-000F	M30	38	76	12	127	32	30	32	58	80	37.5	22.5	1.65	1.73
T-SC-008-000G	M36	44	83	12	152	41	36	39	80	100	54.6	32.76	2.5	2.6
T-SC-008-000H	M42	50	102	12	152	44	42	45	90	110	74.8	44.88	3	3.1
T-SC-008-000I	M48	64	127	16	178	57	48	51	102	140	98.2	58.92	6	6.2
T-SC-008-000J	M56	76	152	19	203	70	56	60	127	165	135.6	81.36	10	10.2
T-SC-008-000K	M64	76	152	19	203	70	64	68	127	165	179	107.4	11	11.2
T-SC-008-000L	M72	76	152	19	203	70	72	76	127	170	227.4	136.44	12.5	12.8

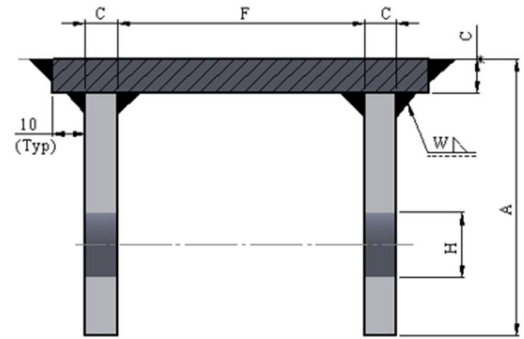
**15.9 FORGED TURNBUCKLE**
**SC-009**


TYPICAL PART NUMBER	AVAILABLE MATERIAL SHORT CODE	STD DETAIL TEMPERATURE LIMITATION	
		MAX. DESIGN TEMP	MIN. DESIGN TEMP.
T-SC-009-000A-CS	CS	120 °C	(-) 46 °C
T-SC-009-000A-SS	SS	150 °C	(-) 105 °C

TYPE	SLING ROD Ø	A (MIN)	B	C	L	MAX. LOAD (kN)		WEIGHTS in kg	
						CS	SS	CS	SS
T-SC-009-000A	M10	110	16	32	185	3.8	2.28	0.56	0.57
T-SC-009-000B	M12	120	24	35	201	5.6	3.36	0.68	0.69
T-SC-009-000C	M16	130	26	40	203	10.4	6.24	0.84	0.86
T-SC-009-000D	M20	140	32	50	216	16.3	9.78	1.2	1.3
T-SC-009-000E	M24	150	35	67	229	23.6	14.16	2	2.4
T-SC-009-000F	M30	170	40	75	252	37.5	22.5	3.55	3.6
T-SC-009-000G	M36	190	53	90	277	54.6	32.76	5	5.1
T-SC-009-000H	M42	210	62	100	305	74.8	44.88	7	7.2
T-SC-009-000I	M48	240	77	108	305	98.2	58.92	8	8.2
T-SC-009-000J	M56	250	83	114	343	135.6	81.36	9	9.2
T-SC-009-000K	M64	260	96	145	343	179	107.4	17	17.3

**15.10 BEAM ATTACHMENT U-LUGS**
**SC-010**


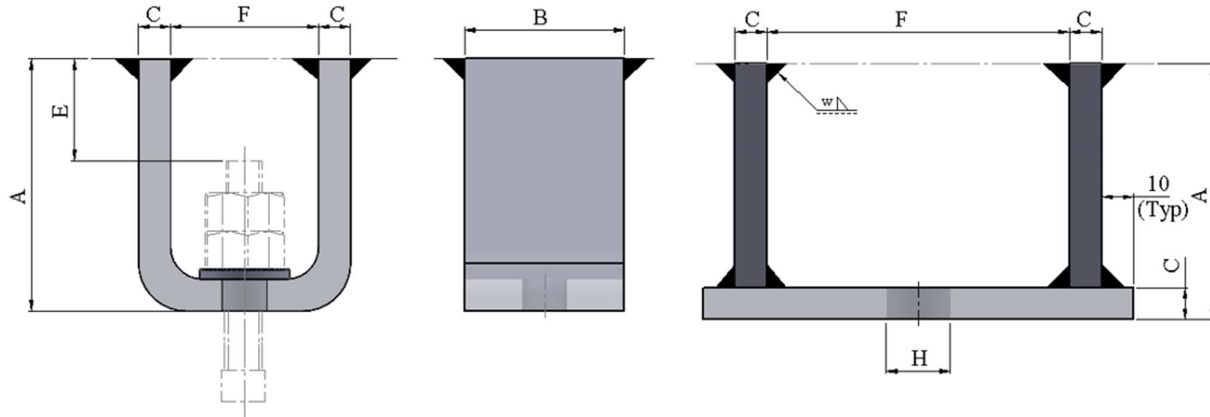
DETAIL FOR SLING ROD UP TO AND INCLUDING 42mm



DETAIL FOR SLING ROD INCLUDING AND ABOVE 48mm

TYPICAL PART NUMBER	AVAILABLE MATERIAL SHORT CODE	STD DETAIL TEMPERATURE LIMITATION	
		MAX. DESIGN TEMP	MIN. DESIGN TEMP.
T-SC-010-000A-CS	CS	120 °C	(-) 46 °C
T-SC-010-000A-SS	SS	150 °C	(-) 105 °C

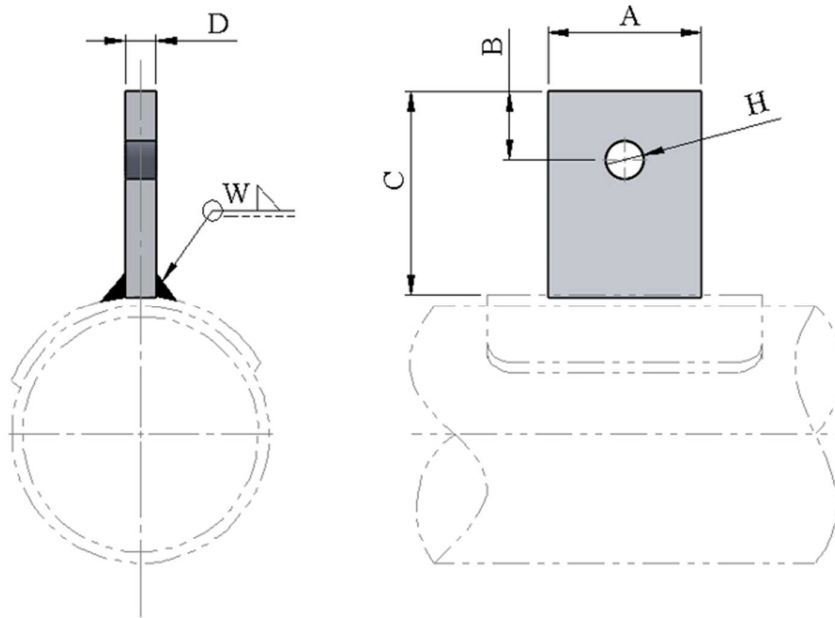
TYPE	SLING ROD Ø	A	B	C	D	E	F	G	H	W	SPLIT PIN	MAX. LOAD (k N)		WEIGHTS in kg	
												CS	SS	CS	SS
T-SC-010-000A	10	50	50	6	60	30	30	10	12	6	3 x 30	3.8	2.28	0.35	0.36
T-SC-010-000B	12	65	50	6	60	40	30	12	14	6	3 x 30	5.6	3.36	0.45	0.47
T-SC-010-000C	16	70	50	6	60	45	30	16	18	6	3 x 30	10.4	6.24	0.49	0.55
T-SC-010-000D	20	85	80	10	70	55	35	20	22	6	3 x 40	16.3	9.78	1	1.1
T-SC-010-000E	24	110	80	10	80	70	40	25	26	6	3 x 40	23.6	14.16	1.1	1.2
T-SC-010-000F	30	125	100	12	100	80	50	30	32	6	4 x 50	37.5	22.5	3	3.1
T-SC-010-000G	36	160	130	15	125	100	70	36	39	6	4 x 50	54.6	32.76	6	6.2
T-SC-010-000H	42	180	130	15	140	110	90	42	45	6	5 x 70	74.8	44.88	8	8.2
T-SC-010-000I	48	210	150	20	160	130	90	48	51	6	5 x 70	98.2	58.92	14	14.3
T-SC-010-000J	56	235	180	20	170	145	100	56	60	8	5 x 80	135.6	81.36	19	19.4
T-SC-010-000K	64	255	200	20	180	160	110	64	68	8	8 x 90	179	107.4	24	24.5
T-SC-010-000L	72	280	220	25	200	180	120	72	76	8	8 x 100	227.4	136.44	36	36.7

**15.11 BEAM ATTACHMENT U-LUGS**
**SC-011**

 DETAIL FOR SLING  
 ROD UP TO AND  
 INCLUDING 42mm

 DETAIL FOR SLING  
 ROD INCLUDING AND 48mm

TYPICAL PART NUMBER	AVAILABLE MATERIAL SHORT CODE	STD DETAIL TEMPERATURE LIMITATION	
		MAX. DESIGN TEMP	MIN. DESIGN TEMP.
T-SC-011-000A-CS	CS	120 °C	(-) 46 °C
T-SC-011-000A-SS	SS	150 °C	(-) 105 °C

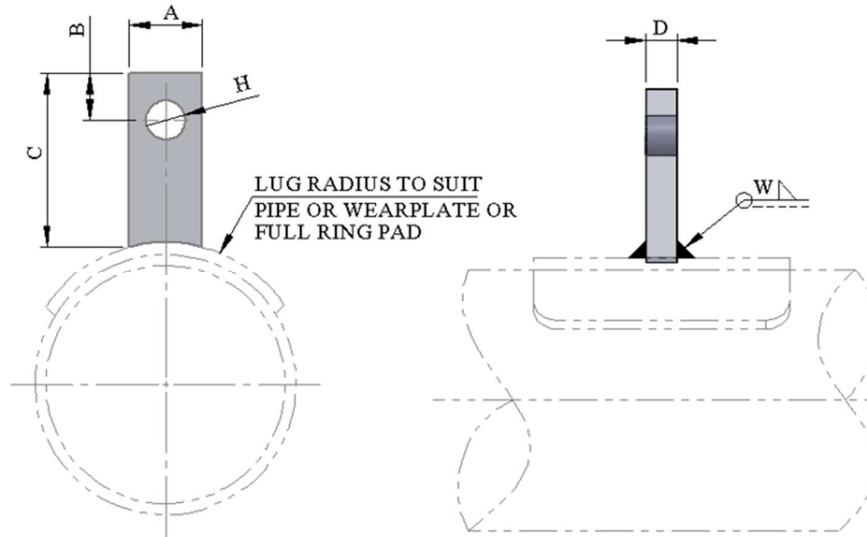
TYPE	SLING ROD Ø	A	B	C	E	F	H	W	MAX. LOAD (kN)		WEIGHTS in kg	
									Carbon Steel	Stainless Steel	CS	SS
T-SC-011-000A	10	75	50	6	30	40	12	6	3.8	2.28	0.29	0.31
T-SC-011-000B	12	75	50	6	30	40	14	6	5.6	3.36	0.5	0.6
T-SC-011-000C	16	85	80	10	30	60	18	6	10.4	6.24	0.96	1.2
T-SC-011-000D	20	85	80	10	30	70	22	6	16.3	9.78	1.2	1.35
T-SC-011-000E	24	115	100	12	40	75	26	6	23.6	14.16	1.3	1.5
T-SC-011-000F	30	120	100	15	40	110	32	6	37.5	22.5	3	3.3
T-SC-011-000G	36	165	150	15	60	120	39	6	54.6	32.76	5	5.3
T-SC-011-000H	42	200	150	20	70	140	45	6	74.8	44.88	8	8.5
T-SC-011-000I	48	210	150	25	70	175	51	6	98.2	58.92	12	12.5
T-SC-011-000J	56	240	180	25	85	185	60	8	135.6	81.36	16	17.2
T-SC-011-000K	64	250	180	30	85	220	68	8	179	107.4	21	22.3
T-SC-011-000L	72	260	200	30	85	230	76	8	227.4	136.44	24	25.5

**15.12 PIPE LUGS**
**SC-012**


TYPICAL PART NUMBER	AVAILABLE MATERIAL SHORT CODE	STD DETAIL TEMPERATURE LIMITATION	
		MAX. DESIGN TEMP	MIN. DESIGN TEMP.
T-SC-012-000A-CS	CS	350°C	- 20°C
T-SC-012-000A-SS	SS	350°C	-196°C (-105°C) ( Refer Note)
T-SC-012-000A-LCS	LCS	350°C	- 46°C
T-SC-012-000A-Du	Du	100°C (Operating)	- 46 °C
T-SC-012-000A-6Mo	6Mo	120°C	-196°C (-105°C) ( Refer Note)
T-SC-012-000A-Ti	Ti	350°C	- 196 °C

TYPE	SLING ROD Ø	A	B	C	D	H	PIN DIA.	W	MAX. LOAD (kN)					WEIGHTS in kg	
									LCS	SS	Du.	6Mo.	Ti.	CS	SS
T-SC-012-000A	10	50	25	55	6	12	10	6	3.8	2.28	5.08	2.92	2.42	0.13	0.14
T-SC-012-000B	12	50	25	65	6	14	12	6	5.6	3.36	7.49	4.3	3.56	0.14	0.15
T-SC-012-000C	16	50	25	75	6	18	16	6	10.4	6.24	13.9	8	6.6	0.17	0.18
T-SC-012-000D	20	80	30	90	10	22	20	6	16.3	9.78	21.8	12.5	10.37	0.54	0.56
T-SC-012-000E	24	80	35	115	10	26	24	6	23.6	14.16	31.6	18	15.5	0.69	0.7
T-SC-012-000F	30	100	45	135	12	32	30	8	37.5	22.5	50	28.8	23.9	1	1.2
T-SC-012-000G	36	130	65	175	15	39	36	8	54.6	32.76	73	42	34.7	2	2.1
T-SC-012-000H	42	130	70	200	15	45	42	8	74.8	44.88	100	57.4	57.6	2	2.1
T-SC-012-000I	48	150	85	235	20	51	48	8	98.2	58.92	131.4	75.4	62.5	5	5.1
T-SC-012-000J	56	180	90	260	20	60	56	10	135.6	81.36	181.4	104	86	6	6.2
T-SC-012-000K	64	200	95	295	20	68	64	10	179	107.4	239.5	137.4	113.8	8	8.2
T-SC-012-000L	72	220	105	325	25	76	72	12	227.4	136.44	304	174.6	241	13	13.3

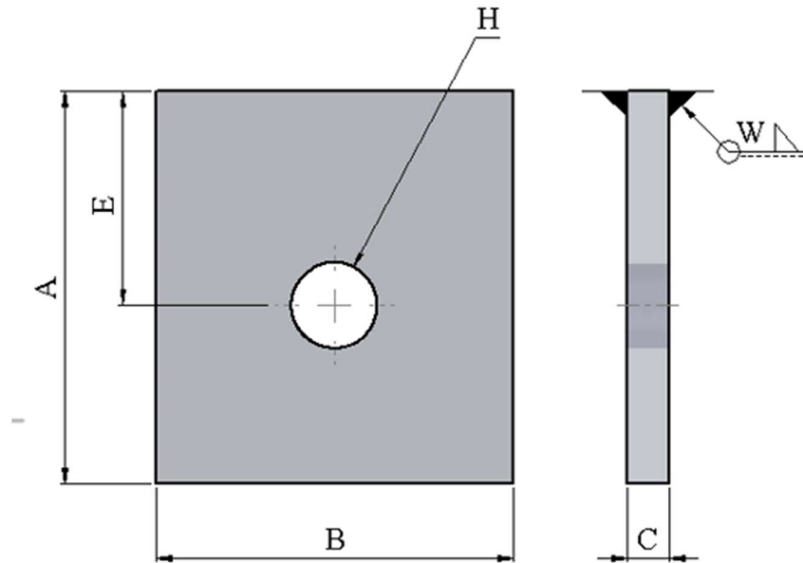
Always use a full ring pad if an acoustic pipe, otherwise usage of a wear plate is optional.  
 Where pipe requires PWHT, wear plate to be welded to pipe before any PWHT.  
 Impact Test Req'd. for the below min design temperature.  
 for Matl. Code SS & 6Mo (-)196° c , for Matl. Code LCS , & DU (-)46°c

**15.13 PIPE LUGS**
**SC-013**


TYPICAL PART NUMBER	AVAILABLE MATERIAL SHORT CODE	STD DETAIL TEMPERATURE LIMITATION	
		MAX. DESIGN TEMP	MIN. DESIGN TEMP.
T-SC-013-000A-CS	CS	350°c	- 20 °C
T-SC-013-000A-SS	SS	350°c	-196°c (-105°c) ( Refer Note)
T-SC-013-000A-LCS	LCS	350°c	- 46 °C
T-SC-013-000A-Du	Du	100°c (Operating)	- 46 °C
T-SC-013-000A-6Mo	6Mo	120°c	-196°c (-105°c) ( Refer Note)
T-SC-013-000A-Ti	Ti	350°c	- 196 °C

YPE	SLING ROD Ø	A	B	C	D	H	PIN DIA.	W	MAX. LOAD (kN)					WEIGHTS in kg	
									LCS	SS	Du.	6Mo.	Ti.	CS	SS
T-SC-013-000A	10	50	25	55	6	12	10	6	3.8	2.28	5.08	2.92	2.42	0.13	0.14
T-SC-013-000B	12	50	25	65	6	14	12	6	5.6	3.36	7.49	4.3	3.56	0.14	0.15
T-SC-013-000C	16	50	25	75	6	18	16	6	10.4	6.24	13.9	8	6.6	0.17	0.18
T-SC-013-000D	20	80	30	90	10	22	20	6	16.3	9.78	21.8	12.5	10.37	0.54	0.56
T-SC-013-000E	24	80	35	115	10	26	24	6	23.6	14.16	31.6	18	15.5	0.69	0.7
T-SC-013-000F	30	100	45	135	12	32	30	8	37.5	22.5	50	28.8	23.9	1	1.2
T-SC-013-000G	36	130	65	175	15	39	36	8	54.6	32.76	73	42	34.7	2	2.1
T-SC-013-000H	42	130	70	200	15	45	42	8	74.8	44.88	100	57.4	57.6	2	2.1
T-SC-013-000I	48	150	85	235	20	51	48	8	98.2	58.92	131.4	75.4	62.5	5	5.1
T-SC-013-000J	56	180	90	260	20	60	56	10	135.6	81.36	181.4	104	86	6	6.2
T-SC-013-000K	64	200	95	295	20	68	64	10	179	107.4	239.5	137.4	113.8	8	8.2
T-SC-013-000L	72	220	105	325	25	76	72	12	227.4	136.44	304	174.6	241	13	13.3

Always use a full ring pad if an acoustic pipe, Otherwise usage of a wear plate is optional.  
 Where pipe requires PWHT , wear plate to be welded to pipe before any PWHT.  
 Impact Test Reqd. for the below min design temp.  
 For Matl. Code SS & 6Mo (-)196° c , For Matl. Code LTCS , & DU (-)46°c

**15.14 WELDING LUG**
**SC-014**


TYPICAL PART NUMBER	AVAILABLE MATERIAL SHORT CODE	STD DETAIL TEMPERATURE LIMITATION	
		MAX. DESIGN TEMP	MIN. DESIGN TEMP.
T-SC-014-000A-CS	CS	350 °C	- 20 °C
T-SC-014-000A-SS	SS	350°C	-196°c (-105°c) ( Refer Note)
T-SC-014-000A-LCS	LCS	350°c	-46 °C
T-SC-014-000A-Du	Du	100°c (Operating)	-46 °C
T-SC-014-000A-6Mo	6Mo	120°c	-196°c (-105°c) ( Refer Note)
T-SC-014-000A-Ti	Ti	350°c	- 196 °C

TYPE	SLING ROD Ø	A	B	C	E	H	PIN DIA.	W	MAX. LOAD (kN)		WEIGHTS (in kg)	
									CS	SS	CS	SS
T-SC-014-000A	10	55	50	6	30	12	10	6	3.8	2.28	0.13	0.14
T-SC-014-000B	12	65	50	6	40	14	12	6	5.6	3.36	0.14	0.15
T-SC-014-000C	16	75	50	6	50	18	16	6	10.4	6.24	0.17	0.18
T-SC-014-000D	20	90	80	10	60	22	20	6	16.3	9.78	0.54	0.56
T-SC-014-000E	24	115	80	10	80	26	24	6	23.6	14.16	0.69	0.7
T-SC-014-000F	30	135	100	12	90	32	30	8	37.5	22.5	1	1.2
T-SC-014-000G	36	175	130	15	110	39	36	8	54.6	32.76	2.1	2.1
T-SC-014-000H	42	200	130	15	130	45	42	8	74.8	44.88	2	2.1
T-SC-014-000I	48	235	150	20	150	51	48	8	98.2	58.92	5	5.1
T-SC-014-000J	56	260	180	20	170	60	56	10	135.6	81.36	6	6.2
T-SC-014-000K	64	295	200	20	200	68	64	10	179	107.4	8	8.2
T-SC-014-000L	72	325	220	25	220	76	72	12	227.4	136.44	13	13.3

Impact Test Req'd. for the below min design temp.  
 For Matl. Code SS & 6Mo (-)196° c , For Matl. Code LTCS , LD & DU (-)46°c