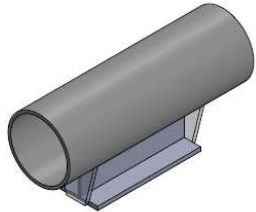
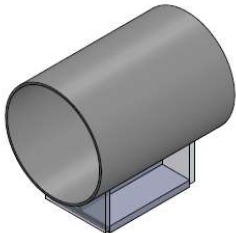
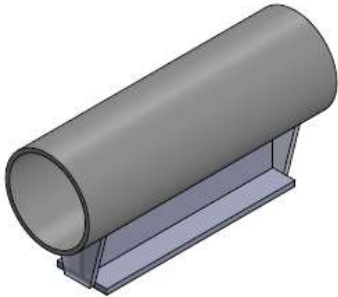
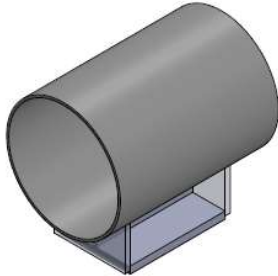
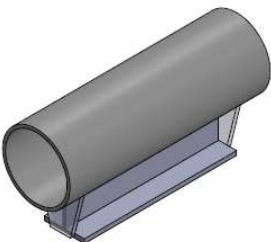
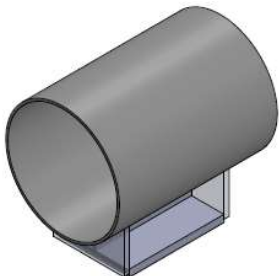
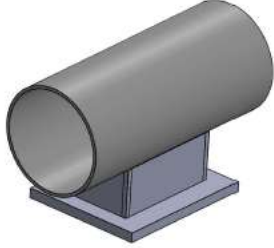
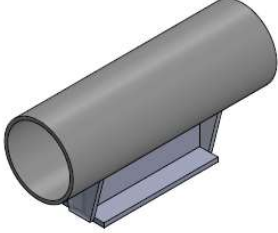
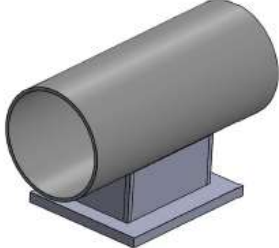
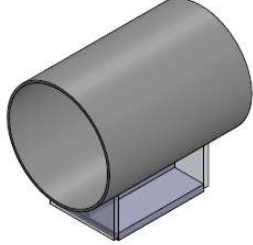
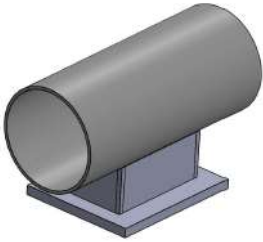
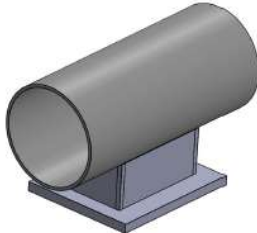
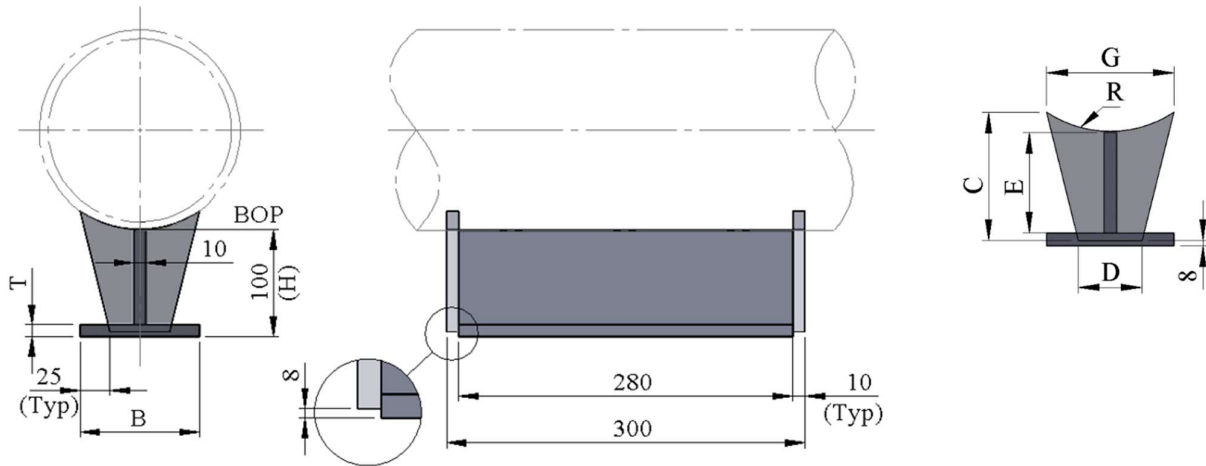


19	Welded Shoes Without Wear Plate	
19.1	T-SH-201 WELDED SHOE FOR CS , SS & ALLOY LINES 2" - 10" , 300mm LONG	19.4 T-SH-204 WELDED SHOE FOR CS , SS & ALLOY LINES 12" - 48" , 300mm LONG
		
19.2	T-SH-202 WELDED SHOE FOR CS , SS & ALLOY LINES 2" - 10" , 400mm LONG	19.5 T-SH-205 WELDED SHOE FOR CS , SS & ALLOY LINES 12" - 48" , 400mm LONG
		
19.3	T-SH-203 WELDED SHOE FOR CS , SS & ALLOY LINES 2" - 10" , 500mm LONG	19.6 T-SH-206 WELDED SHOE FOR CS , SS & ALLOY LINES 12" - 48" , 500mm LONG
		

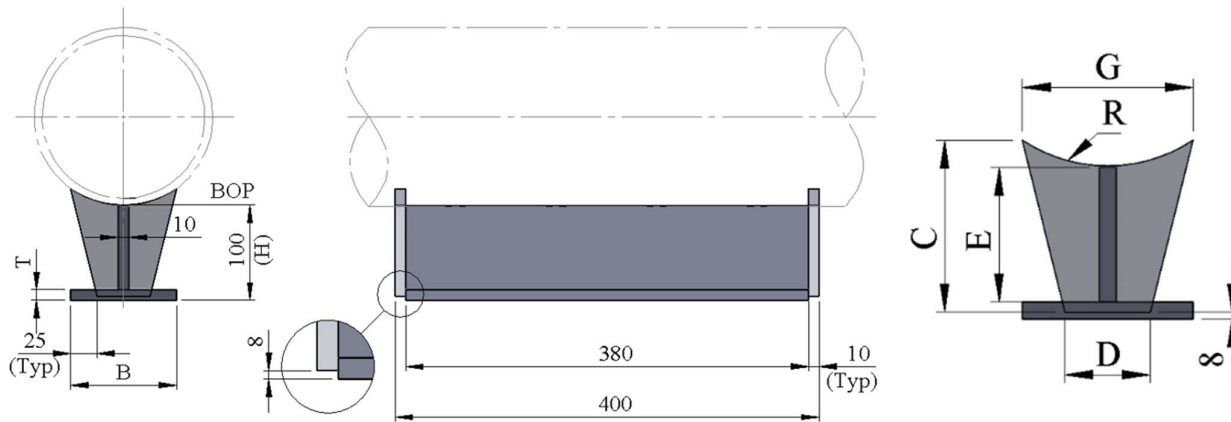
19		Welded Shoes Without Wear Plate 100 mm High	
19.7	T-SH-207 WELDED SHOE FOR CS , SS & ALLOY LINES 12" - 48" , 300mm LONG	19.10	T-SH-950 SPECIAL WELDED SHOE FOR CS , SS & ALLOY LINES 2" - 10"
			
19.8	T-SH-208 WELDED SHOE FOR CS , SS & ALLOY LINES 12" - 48" , 400mm LONG	19.11	T-SH-951 SPECIAL WELDED SHOE FOR CS , SS & ALLOY LINES 12" - 48"
			
19.9	T-SH-209 WELDED SHOE FOR CS , SS & ALLOY LINES 12" - 48" , 500mm LONG	19.12	T-SH-952 SPECIAL WELDED SHOE FOR CS , SS & ALLOY LINES 12" - 48"
			

**19.1 WELDED SHOE FOR CS, SS & ALLOY LINES 50- 250mm / 2" - 10" ,
100mm HIGH - 300mm LONG**
SH - 201


TYPICAL PART NUMBER	AVAILABLE MATERIAL SHORT CODE	STD DETAIL TEMPERATURE LIMITATION	
		MAX. DESIGN TEMP	MIN. DESIGN TEMP
T-SH-201-(DN)-SS/CS (CS BOTTOM PLATE)	SS / CS	350°c	- 20 °c
T-SH-201-(DN)-CS	CS	350°c	-20 °c
T-SH-201-(DN)-LCS	LCS	350°c	-46 °c
T-SH-201-(DN)-SS	SS	350°c	-196°c (-105°c) (Refer Note)
T-SH-201-(DN)-Du	Du	100°c (Operating)	- 46 °c
T-SH-201-(DN)-Ti	Ti	350°c	- 196°c

TYPE	LINE SIZE			SHOE DIMENSIONS							WEIGHTS in kg
	DN (mm)	NPS in (inch)	NPS in (mm)	B	C	D	E	G	R	T	CS
T-SH-201-0050	DN 50	2"	60.3	100	100	50	90	40	30	10	4.85
T-SH-201-0080	DN 80	3"	88.9	100	97	50	90	40	44	10	4.88
T-SH-201-0100	DN 100	4"	114.3	100	101	50	90	60	57	10	5.04
T-SH-201-0125	DN 125	5"	141.3	100	106	50	90	85	71	10	5.21
T-SH-201-0150	DN 150	6"	168.3	100	113	50	90	110	84	10	5.39
T-SH-201-0200	DN 200	8"	219.1	100	107	50	90	110	110	10	5.39
T-SH-201-0250	DN 250	10"	273	150	123	100	85	174	137	15	8.61

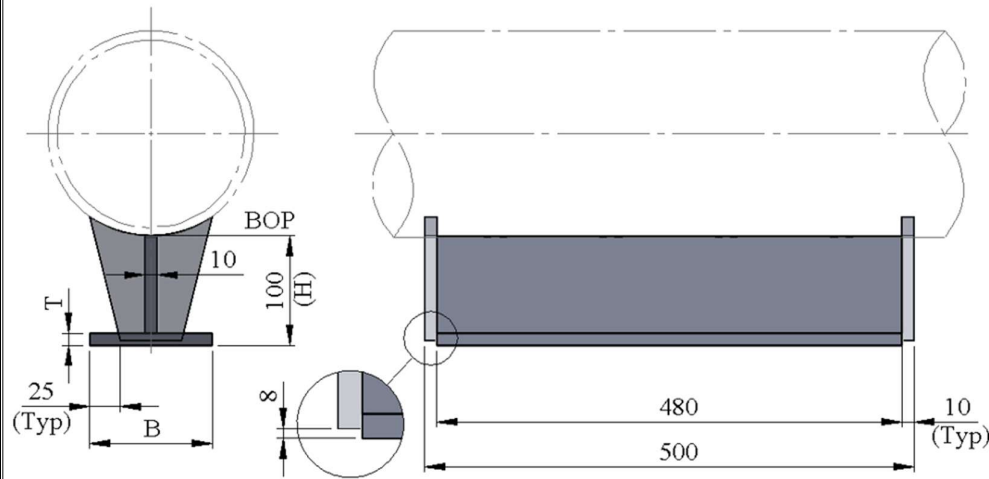
All welds to be a = 0.7 x W.T., but maximum 4mm CFW.
 This shoe to be used for lines with an anchor, line stop or high guide load restraints.
 All welded attachment welded direct to PWHT pipe need to be welded before PWHT.
 Impact Test Req'd. for the below min design temperature.
 for Matl. Code SS (-)196° c , for Matl. Code LCS , & DU (-)46°c

**19.2 WELDED SHOE FOR CS, SS & ALLOY LINES 50- 250mm / 2" - 10" ,
100mm HIGH - 400mm LONG**
SH - 202


TYPICAL PART NUMBER	AVAILABLE MATERIAL SHORT CODE	STD DETAIL TEMPERATURE LIMITATION	
		MAX. DESIGN TEMP	MIN. DESIGN TEMP
T-SH-202-(DN)-SS/CS (CS BOTTOM PLATE)	SS / CS	350°C	- 20 °c
T-SH-202-(DN)-CS	CS	350°C	-20 °c
T-SH-202-(DN)-LCS	LCS	350°C	-46 °c
T-SH-202-(DN)-SS	SS	350°C	-196°C (-105°C) (Refer Note)
T-SH-202-(DN)-Du	Du	100°C (Operating)	- 46 °c
T-SH-202-(DN)-Ti	Ti	350°C	- 196°C

TYPE	LINE SIZE			SHOE DIMENSIONS							WEIGHTS in kg
	DN (mm)	NPS in (inch)	NPS in (mm)	B	C	D	E	G	R	T	CS
T-SH-202-0050	DN 50	2"	60.3	100	100	50	90	40	30	10	6.34
T-SH-202-0080	DN 80	3"	88.9	100	97	50	90	40	44	10	6.33
T-SH-202-0100	DN 100	4"	114.3	100	101	50	90	60	57	10	6.49
T-SH-202-0125	DN 125	5"	141.3	100	106	50	90	85	71	10	6.66
T-SH-202-0150	DN 150	6"	168.3	100	113	50	90	110	84	10	6.84
T-SH-202-0200	DN 200	8"	219.1	100	107	50	90	110	110	10	6.84
T-SH-202-0250	DN 250	10"	273.0	150	123	100	85	174	137	15	10.95

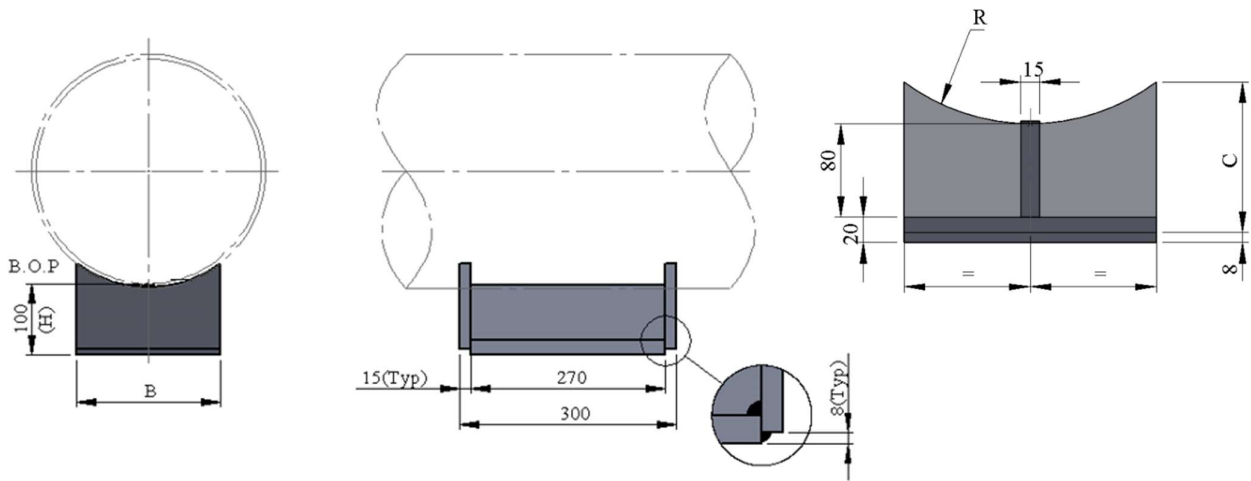
All welds to be a = 0.7 x W.T., but maximum 4mm CFW.
 This shoe to be used for lines with an anchor, line stop or high guide load restraints.
 All welded attachment welded direct to PWHT pipe need to be welded before PWHT.
 Impact Test Req'd. for the below min design temperature.
 for Matl. Code SS (-)196° c, for Matl. Code LCS, & DU (-)46°c

**19.3 WELDED SHOE FOR CS, SS & ALLOY LINES 50- 250mm / 2" - 10" ,
100mm HIGH - 500mm LONG**
SH - 203


TYPICAL PART NUMBER	AVAILABLE MATERIAL SHORT CODE	STD DETAIL TEMPERATURE LIMITATION	
		MAX. DESIGN TEMP	MIN. DESIGN TEMP
T-SH-203-(DN)-SS/CS (CS BOTTOM PLATE)	SS / CS	350°c	- 20 °c
T-SH-203-(DN)-CS	CS	350°c	-20 °c
T-SH-203-(DN)-LCS	LCS	350°c	-46 °c
T-SH-203-(DN)-SS	SS	350°c	-196°c (-105°c) (Refer Note)
T-SH-203-(DN)-Du	Du	100°c (Operating)	- 46 °c
T-SH-203-(DN)-Ti	Ti	350°c	- 196°c

TYPE	LINE SIZE			SHOE DIMENSIONS							WEIGHTS in kg
	DN (mm)	NPS in (inch)	NPS in (mm)	B	C	D	E	G	R	T	CS
T-SH-203-0050	DN 50	2"	60.3	100	100	50	90	40	30	10	7.83
T-SH-203-0080	DN 80	3"	88.9	100	97	50	90	40	44	10	7.82
T-SH-203-0100	DN 100	4"	114.3	100	101	50	90	60	57	10	7.98
T-SH-203-0125	DN 125	5"	141.3	100	106	50	90	85	71	10	8.15
T-SH-203-0150	DN 150	6"	168.3	100	113	50	90	110	84	10	8.34
T-SH-203-0200	DN 200	8"	219.1	100	107	50	90	110	110	10	8.33
T-SH-203-0250	DN 250	10"	273.0	150	123	100	85	174	137	15	13.39

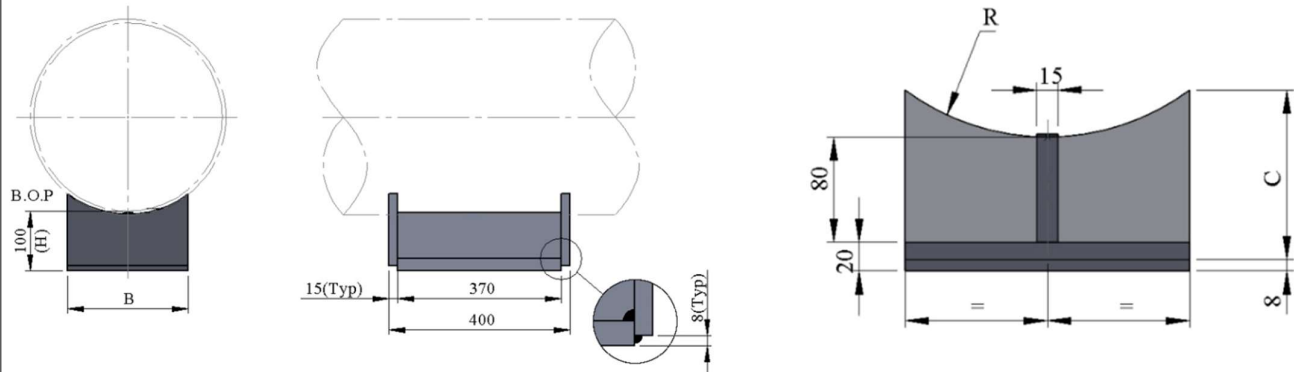
All welds to be a = 0.7 x W.T., but maximum 4mm CFW.
 This shoe to be used for lines with an anchor, line Stop or high guide load restraints.
 All welded attachment welded direct to PWHT pipe need to be welded before PWHT.
 Impact Test Req'd. for the below min design temperature.
 for Matl. Code SS (-)196° c, for Matl. Code LCS, & DU (-)46°c

19.4 WELDED SHOE FOR CS, SS & ALLOY LINES 300- 1200mm / 12" - 48", 150mm HIGH - 300mm LONG
SH -204


TYPICAL PART NUMBER	AVAILABLE MATERIAL SHORT CODE	STD DETAIL TEMPERATURE LIMITATION	
		MAX. DESIGN TEMP	MIN. DESIGN TEMP
T-SH-204-(DN)-SS/CS (CS BOTTOM PLATE)	SS / CS	350°C	- 20 °c
T-SH-204-(DN)-CS	CS	350°C	-20 °c
T-SH-204-(DN)-LCS	LCS	350°C	-46 °c
T-SH-204-(DN)-SS	SS	350°C	-196°C (-105°C) (Refer Note)
T-SH-204-(DN)-Du	Du	100°C (Operating)	- 46 °c
T-SH-204-(DN)-Ti	Ti	350°C	- 196°C

TYPE	LINE SIZE			SHOE DIMENSIONS			WEIGHTS in kg
	DN (mm)	NPS in (inch)	NPS in (mm)	B	C	R	CS
T-SH-204-0300	DN 300	12"	323.8	250	151	162	16
T-SH-204-0350	DN 350	14"	355.6	300	174	178	18.7
T-SH-204-0400	DN 400	16"	406.4	350	192	203	21.4
T-SH-204-0450	DN 450	18"	457.2	350	174	229	21.4
T-SH-204-0500	DN 500	20"	508.0	400	189	254	24.1
T-SH-204-0550	DN 550	22"	558.8	400	176	279	24.1
T-SH-204-0600	DN 600	24"	609.6	500	192	305	27.9
T-SH-204-0650	DN 650	26"	660.4	500	207	330	29.7
T-SH-204-0700	DN 700	28"	711.2	550	272	356	35.7
T-SH-204-0750	DN 750	30"	762.0	600	238	381	35.2
T-SH-204-0800	DN 800	32"	812.8	600	224	406	35.2
T-SH-204-0850	DN 850	34"	863.6	600	213	432	35.2
T-SH-204-0900	DN 900	36"	914.4	700	255	457	40.8
T-SH-204-0950	DN 950	38"	965.2	700	242	483	40.8
T-SH-204-1000	DN 1000	40"	1016.0	700	232	508	40.8
T-SH-204-1050	DN 1050	42"	1066.8	800	272	534	46.4
T-SH-204-1100	DN 1100	44"	1117.6	800	261	559	46.4
T-SH-204-1150	DN 1150	46"	1168.4	800	250	584	46.3
T-SH-204-1200	DN 1200	48"	1219.2	900	290	610	52.1

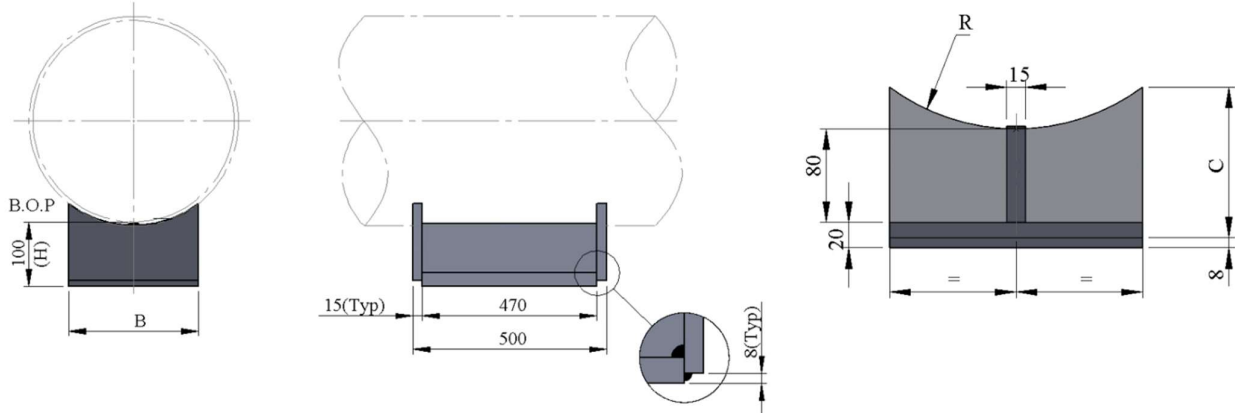
All welds to be a = 0.7 x W.T., but maximum 4mm CFW.
 This shoe to be used for lines with an anchor, line stop or high guide load restraints.
 All welded attachment welded direct to PWHT need to be welded before PWHT.
 Impact Test Req'd. for the below min design temperature.
 for Matl. Code SS (-)196° c, for Matl. Code LCS, & DU (-)46°

**19.5 WELDED SHOE FOR CS, SS & ALLOY LINES 300- 1200mm / 12" - 48" ,
100mm HIGH - 400mm LONG**
SH - 205


TYPICAL PART NUMBER	AVAILABLE MATERIAL SHORT CODE	STD DETAIL TEMPERATURE LIMITATION	
		MAX. DESIGN TEMP	MIN. DESIGN TEMP
T-SH-205-(DN)-SS/CS (CS BOTTOM PLATE)	SS / CS	350°c	- 20 °c
T-SH-205-(DN)-CS	CS	350°c	-20 °c
T-SH-205-(DN)-LCS	LCS	350°c	-46 °c
T-SH-205-(DN)-SS	SS	350°c	-196°c (-105°c) (Refer Note)
T-SH-205-(DN)-Du	Du	100°c (Operating)	- 46 °c
T-SH-205-(DN)-Ti	Ti	350°c	- 196°c

TYPE	LINE SIZE			SHOE DIMENSIONS			WEIGHTS in kg
	DN (mm)	NPS in (inch)	NPS in (mm)	B	C	R	CS
T-SH-205-0300	DN 300	12"	323.8	250	151	162	20.84
T-SH-205-0350	DN 350	14"	355.6	300	174	178	24.33
T-SH-205-0400	DN 400	16"	406.4	350	192	203	27.83
T-SH-205-0450	DN 450	18"	457.2	350	174	229	27.88
T-SH-205-0500	DN 500	20"	508.0	400	189	254	31.36
T-SH-205-0550	DN 550	22"	558.8	400	176	279	31.35
T-SH-205-0600	DN 600	24"	609.6	500	192	305	36.66
T-SH-205-0650	DN 650	26"	660.4	500	207	330	38.48
T-SH-205-0700	DN 700	28"	711.2	550	272	356	45.25
T-SH-205-0750	DN 750	30"	762.0	600	238	381	45.55
T-SH-205-0800	DN 800	32"	812.8	600	224	406	45.53
T-SH-205-0850	DN 850	34"	863.6	600	213	432	45.54
T-SH-205-0900	DN 900	36"	914.4	700	255	457	52.71
T-SH-205-0950	DN 950	38"	965.2	700	242	483	52.70
T-SH-205-1000	DN 1000	40"	1016.0	700	232	508	52.71
T-SH-205-1050	DN 1050	42"	1066.8	800	272	534	59.89
T-SH-205-1100	DN 1100	44"	1117.6	800	261	559	59.94
T-SH-205-1150	DN 1150	46"	1168.4	800	250	584	59.83
T-SH-205-1200	DN 1200	48"	1219.2	900	290	610	67.13

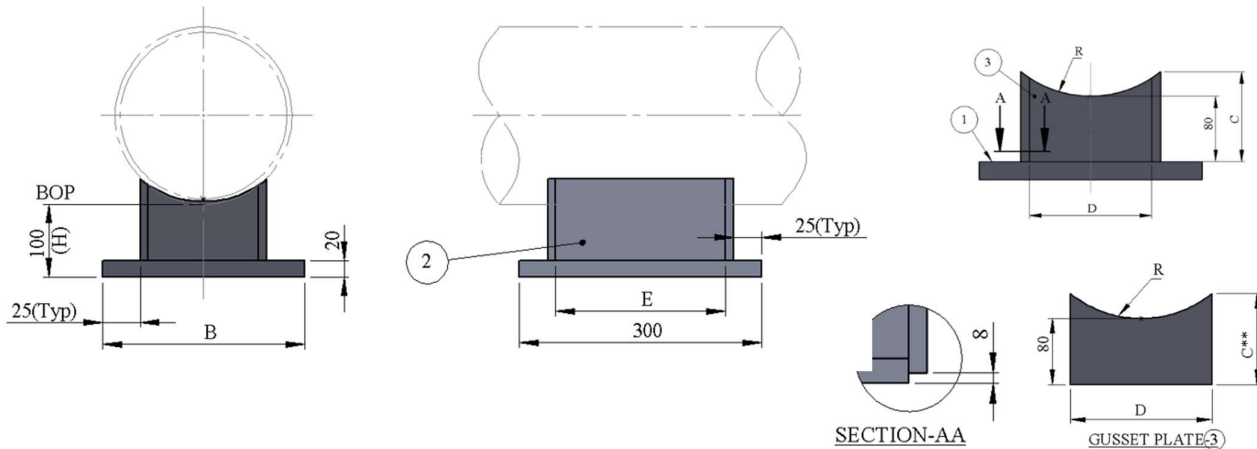
All welds to be a = 0.7 x W.T., but maximum 4mm CFW.
 This shoe to be used for lines with an anchor, line stop or high guide load restraints.
 All welded attachment welded direct to PWHT need to be welded before PWHT.
 Impact Test Req. for the below min design temperature.
 for Matl. Code SS (-)196° c , for Matl. Code LCS , & DU (-)46°c

**19.6 WELDED SHOE FOR CS, SS & ALLOY LINES 300- 1200mm / 12" - 48" ,
100mm HIGH - 500mm LONG**
SH - 206


TYPICAL PART NUMBER	AVAILABLE MATERIAL SHORT CODE	STD DETAIL TEMPERATURE LIMITATION	
		MAX. DESIGN TEMP	MIN. DESIGN TEMP
T-SH-206-(DN)-SS/CS (CS BOTTOM PLATE)	SS / CS	350°C	- 20 °c
T-SH-206-(DN)-CS	CS	350°C	-20 °c
T-SH-206-(DN)-LCS	LCS	350°C	-46 °c
T-SH-206-(DN)-SS	SS	350°C	-196°C (-105°C) (Refer Note)
T-SH-206-(DN)-Du	Du	100°C (Operating)	- 46 °c
T-SH-206-(DN)-Ti	Ti	350°C	- 196°C

TYPE	LINE SIZE			SHOE DIMENSIONS			WEIGHTS in kg
	DN (mm)	NPS in (inch)	NPS in (mm)	B	C	R	CS
T-SH-206-0300	DN 300	12"	323.8	250	151	162	25.71
T-SH-206-0350	DN 350	14"	355.6	300	174	178	29.98
T-SH-206-0400	DN 400	16"	406.4	350	192	203	34.27
T-SH-206-0450	DN 450	18"	457.2	350	174	229	34.32
T-SH-206-0500	DN 500	20"	508.0	400	189	254	38.58
T-SH-206-0550	DN 550	22"	558.8	400	176	279	38.57
T-SH-206-0600	DN 600	24"	609.6	500	192	305	45.45
T-SH-206-0650	DN 650	26"	660.4	500	207	330	47.27
T-SH-206-0700	DN 700	28"	711.2	550	272	356	54.82
T-SH-206-0750	DN 750	30"	762.0	600	238	381	55.92
T-SH-206-0800	DN 800	32"	812.8	600	224	406	55.89
T-SH-206-0850	DN 850	34"	863.6	600	213	432	55.90
T-SH-206-0900	DN 900	36"	914.4	700	255	457	64.64
T-SH-206-0950	DN 950	38"	965.2	700	242	483	64.63
T-SH-206-1000	DN 1000	40"	1016.0	700	232	508	64.64
T-SH-206-1050	DN 1050	42"	1066.8	800	272	534	73.39
T-SH-206-1100	DN 1100	44"	1117.6	800	261	559	73.45
T-SH-206-1150	DN 1150	46"	1168.4	800	250	584	73.33
T-SH-206-1200	DN 1200	48"	1219.2	900	290	610	82.20

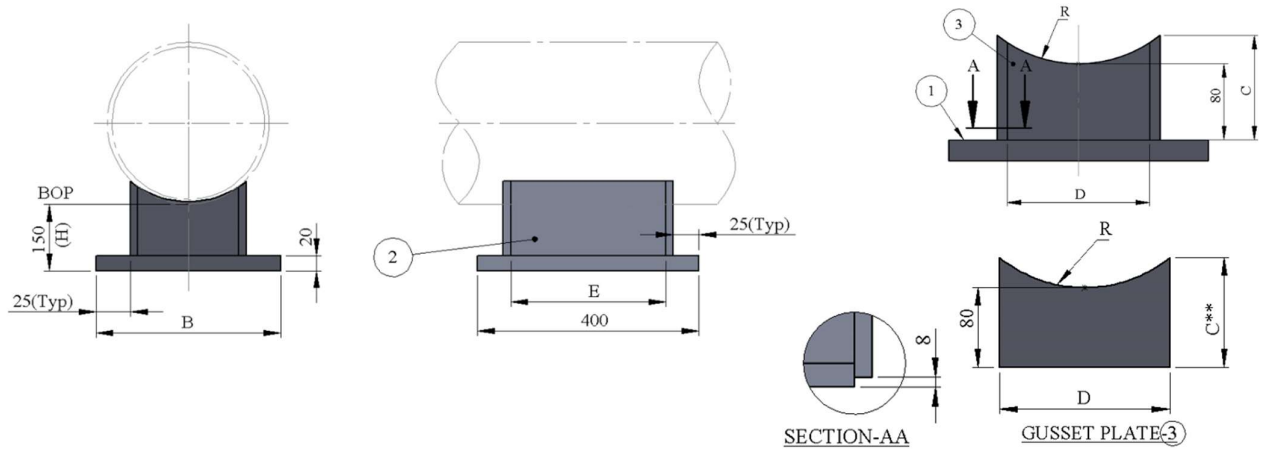
All welds to be a = 0.7 x W.T., but maximum 4mm CFW.
 This shoe to be used for lines with an anchor, line stop or high guide load restraints.
 All welded attachment welded direct to PWHT need to be welded before PWHT.
 Impact Test Req'd. for the below min design temperature.
 for Matl. Code SS (-)196° c , for Matl. Code LCS , & DU (-)46°c

**19.7 WELDED SHOE FOR CS, SS & ALLOY LINES 300- 1200mm / 12" - 48" ,
100mm HIGH - 300mm LONG**
SH - 207


TYPICAL PART NUMBER	AVAILABLE MATERIAL SHORT CODE	STD DETAIL TEMPERATURE LIMITATION	
		MAX. DESIGN TEMP	MIN. DESIGN TEMP
T-SH-207-(DN)-SS/CS (CS BOTTOM PLATE)	SS / CS	350°C	- 20 °c
T-SH-207-(DN)-CS	CS	350°C	-20 °c
T-SH-207-(DN)-LCS	LCS	350°C	-46 °c
T-SH-207-(DN)-SS	SS	350°C	-196°C (-105°C) (Refer Note)
T-SH-207-(DN)-Du	Du	100°C (Operating)	- 46 °c
T-SH-207-(DN)-Ti	Ti	350°C	- 196°C

TYPE	LINE SIZE			SHOE DIMENSIONS					PLATE THICKNESS			WEIGHTS in kg
	DN (mm)	NPS in (inch)	NPS in (mm)	B	C	D	E	R	①	②	③	CS
T-SH-207-0300	DN 300	12"	323.8	250	109	184	230	162	20	10	10	18.05
T-SH-207-0350	DN 350	14"	355.6	300	124	234	230	178	20	10	10	21.75
T-SH-207-0400	DN 400	16"	406.4	350	138	284	230	203	20	10	10	25.52
T-SH-207-0450	DN 450	18"	457.2	350	129	284	230	229	20	10	10	25.12
T-SH-207-0500	DN 500	20"	508.0	400	143	334	230	254	20	10	10	28.94
T-SH-207-0550	DN 550	22"	558.8	400	135	334	230	279	20	10	10	28.59
T-SH-207-0600	DN 600	24"	609.6	500	171	434	230	305	20	10	10	36.75
T-SH-207-0650	DN 650	26"	660.4	500	161	434	230	330	20	10	10	36.25
T-SH-207-0700	DN 700	28"	711.2	550	175	484	220	356	20	15	15	49.26
T-SH-207-0750	DN 750	30"	762.0	600	189	534	220	381	20	15	15	54.80
T-SH-207-0800	DN 800	32"	812.8	600	180	534	220	406	20	15	15	53.85
T-SH-207-0850	DN 850	34"	863.6	600	172	534	220	432	20	15	15	52.94
T-SH-207-0900	DN 900	36"	914.4	700	208	634	220	457	20	15	15	65.34
T-SH-207-0950	DN 950	38"	965.2	700	199	634	220	483	20	15	15	64.22
T-SH-207-1000	DN 1000	40"	1016.0	700	191	634	220	508	20	15	15	63.24
T-SH-207-1050	DN 1050	42"	1066.8	800	226	734	220	534	20	15	15	76.15
T-SH-207-1100	DN 1100	44"	1117.6	800	217	734	220	559	20	15	15	74.49
T-SH-207-1150	DN 1150	46"	1168.4	800	210	734	220	584	20	15	15	73.56
T-SH-207-1200	DN 1200	48"	1219.2	900	245	834	220	610	20	15	15	87.51

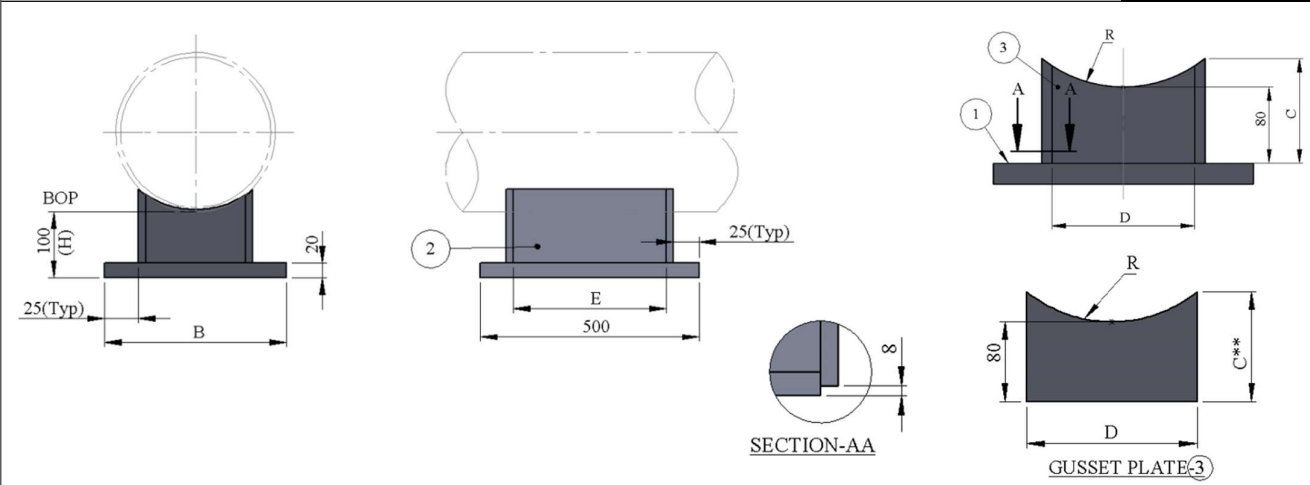
All welds to be a = 0.7 x W.T., but maximum 4mm CFW.
 This shoe to be used for lines with an anchor, line stop or high guide load restraints.
 All welded attachment welded direct to PWHT pipe need to be welded before PWHT.
 Impact Test Req'd. for the below min design temperature.
 for Matl. Code SS \(-)196° c , for Matl. Code LCS , & DU \(-)46°c

**19.8 WELDED SHOE FOR CS, SS & ALLOY LINES 300- 1200mm / 12" - 48" ,
100mm HIGH - 400mm LONG**
SH - 208


TYPICAL PART NUMBER	AVAILABLE MATERIAL SHORT CODE	STD DETAIL TEMPERATURE LIMITATION	
		MAX. DESIGN TEMP	MIN. DESIGN TEMP
T-SH-208-(DN)-SS/CS (CS BOTTOM PLATE)	SS / CS	350°C	- 20 °c
T-SH-208-(DN)-CS	CS	350°C	-20 °c
T-SH-208-(DN)-LCS	LCS	350°C	-46 °c
T-SH-208-(DN)-SS	SS	350°C	-196°C (-105°C) (Refer Note)
T-SH-208-(DN)-Du	Du	100°C (Operating)	- 46 °c
T-SH-208-(DN)-Ti	Ti	350°C	- 196°C

TYPE	LINE SIZE			SHOE DIMENSIONS					PLATE THICKNESS			WEIGHTS in kg
	DN (mm)	NPS in (inch)	NPS in (mm)	B	C	D	E	R	①	②	③	CS
T-SH-208-0300	DN 300	12"	323.8	250	109	184	330	162	20	10	10	23.58
T-SH-208-0350	DN 350	14"	355.6	300	124	234	330	178	20	10	10	28.28
T-SH-208-0400	DN 400	16"	406.4	350	138	284	330	203	20	10	10	33.04
T-SH-208-0450	DN 450	18"	457.2	350	129	284	330	229	20	10	10	32.52
T-SH-208-0500	DN 500	20"	508.0	400	143	334	330	254	20	10	10	37.33
T-SH-208-0550	DN 550	22"	558.8	400	135	334	330	279	20	10	10	36.89
T-SH-208-0600	DN 600	24"	609.6	500	171	434	330	305	20	10	10	47.12
T-SH-208-0650	DN 650	26"	660.4	500	161	434	330	330	20	10	10	46.51
T-SH-208-0700	DN 700	28"	711.2	550	175	484	320	355	20	15	15	61.69
T-SH-208-0750	DN 750	30"	762.0	600	189	534	320	381	20	15	15	68.35
T-SH-208-0800	DN 800	32"	812.8	600	180	534	320	406	20	15	15	67.23
T-SH-208-0850	DN 850	34"	863.6	600	172	534	320	432	20	15	15	66.15
T-SH-208-0900	DN 900	36"	914.4	700	208	634	320	457	20	15	15	80.90
T-SH-208-0950	DN 950	38"	965.2	700	199	634	320	483	20	15	15	79.58
T-SH-208-1000	DN 1000	40"	1016.0	700	191	634	320	508	20	15	15	78.46
T-SH-208-1050	DN 1050	42"	1066.8	800	226	734	320	534	20	15	15	93.70
T-SH-208-1100	DN 1100	44"	1117.6	800	217	734	320	559	20	15	15	91.66
T-SH-208-1150	DN 1150	46"	1168.4	800	210	734	320	584	20	15	15	90.57
T-SH-208-1200	DN 1200	48"	1219.2	900	245	834	320	610	20	15	15	107.1

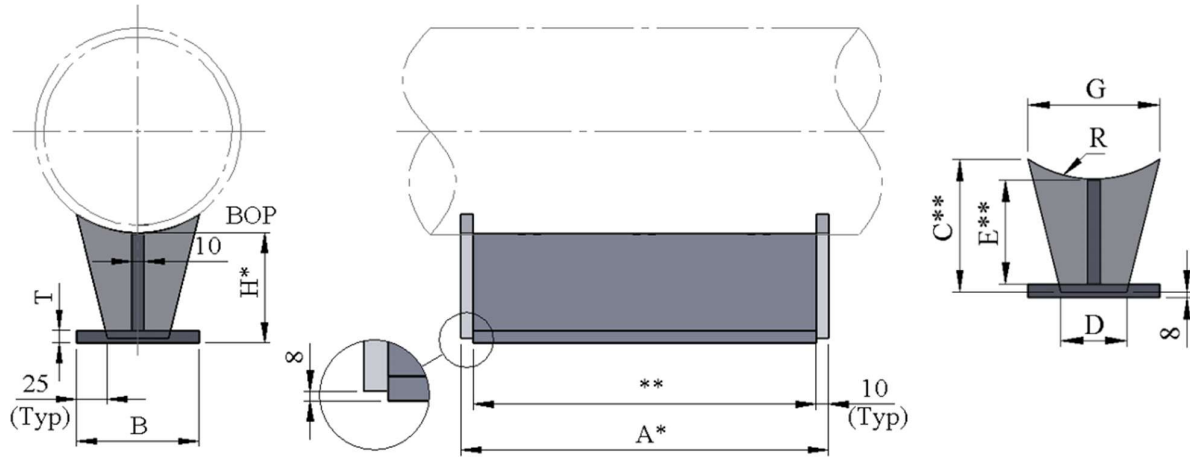
All welds to be a = 0.7 x W.T., but maximum 4mm CFW.
 This shoe to be used for lines with an anchor, line stop or high guide load restraints.
 All welded attachment welded direct to PWHT pipe need to be welded before PWHT.
 Impact Test Req'd. for the below min design temperature.
 for Matl. Code SS (-)196° c, for Matl. Code LCS, & DU (-)46°c

**19.9 WELDED SHOE FOR CS, SS & ALLOY LINES 300- 1200mm / 12" - 48" ,
100mm HIGH - 500mm LONG**
SH - 209


TYPICAL PART NUMBER	AVAILABLE MATERIAL SHORT CODE	STD DETAIL TEMPERATURE LIMITATION	
		MAX. DESIGN TEMP	MIN. DESIGN TEMP
T-SH-209-(DN)-SS/CS (CS BOTTOM PLATE)	SS / CS	350°c	- 20 °c
T-SH-209-(DN)-CS	CS	350°c	-20 °c
T-SH-209-(DN)-LCS	LCS	350°c	-46 °c
T-SH-209-(DN)-SS	SS	350°c	-196°c (-105°c) (Refer Note)
T-SH-209-(DN)-Du	Du	100°c (Operating)	- 46 °c
T-SH-209-(DN)-Ti	Ti	350°c	- 196°c

TYPE	LINE SIZE			SHOE DIMENSIONS					PLATE THICKNESS			WEIGHTS in kg
	DN (mm)	NPS in (inch)	NPS in (mm)	B	C	D	E	R	①	②	③	CS
T-SH-209-0300	DN 300	12"	323.8	250	109	184	430	162	20	10	10	29.11
T-SH-209-0350	DN 350	14"	355.6	300	124	234	430	178	20	10	10	34.8
T-SH-209-0400	DN 400	16"	406.4	350	138	284	430	203	20	10	10	40.56
T-SH-209-0450	DN 450	18"	457.2	350	129	284	430	229	20	10	10	39.93
T-SH-209-0500	DN 500	20"	508.0	400	143	334	430	254	20	10	10	45.72
T-SH-209-0550	DN 550	22"	558.8	400	135	334	430	279	20	10	10	45.19
T-SH-209-0600	DN 600	24"	609.6	500	171	434	430	305	20	10	10	57.5
T-SH-209-0650	DN 650	26"	660.4	500	161	434	430	330	20	10	10	56.76
T-SH-209-0700	DN 700	28"	711.2	550	175	484	420	356	20	15	15	66.53
T-SH-209-0750	DN 750	30"	762.0	600	189	534	420	381	20	15	15	73.64
T-SH-209-0800	DN 800	32"	812.8	600	180	534	420	406	20	15	15	72.69
T-SH-209-0850	DN 850	34"	863.6	600	172	534	420	432	20	15	15	71.78
T-SH-209-0900	DN 900	36"	914.4	700	208	634	420	457	20	15	15	87.32
T-SH-209-0950	DN 950	38"	965.2	700	199	634	420	483	20	15	15	86.2
T-SH-209-1000	DN 1000	40"	1016.0	700	191	634	420	508	20	15	15	85.22
T-SH-209-1050	DN 1050	42"	1066.8	800	226	734	420	534	20	15	15	101.27
T-SH-209-1100	DN 1100	44"	1117.6	800	217	734	420	559	20	15	15	99.61
T-SH-209-1150	DN 1150	46"	1168.4	800	210	734	420	584	20	15	15	98.68
T-SH-209-1200	DN 1200	48"	1219.2	900	245	834	420	610	20	15	15	115.8

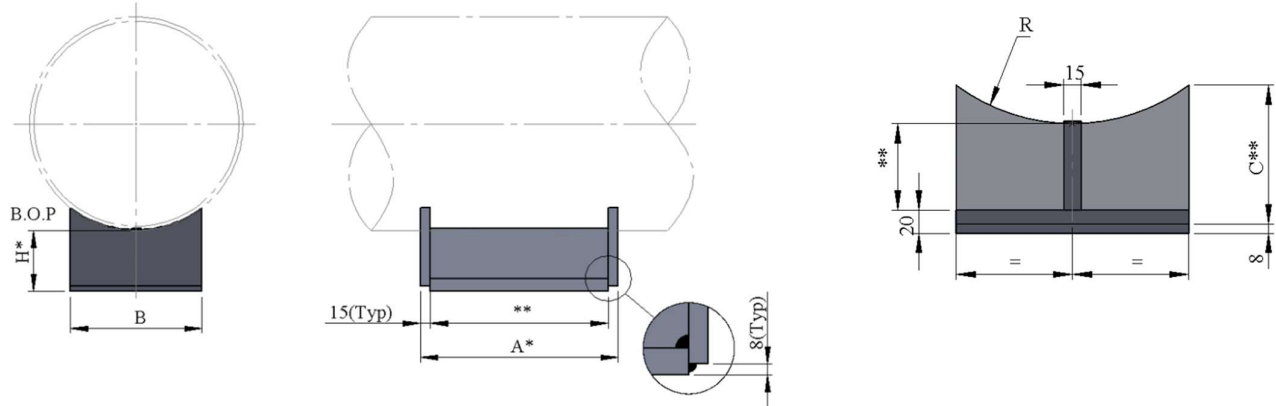
All welds to be a = 0.7 x W.T., but maximum 4mm CFW.
 This shoe to be used for lines with an anchor, line stop or high guide load restraints.
 All welded attachment welded direct to PWHT pipe need to be welded before PWHT
 Impact Test Req'd. for the below min design temperature.
 for Matl. Code SS (-)196° c, for Matl. Code LCS, & DU (-)46°c

**19.10 SPECIAL WELDED SHOE FOR CS , SS & ALLOY LINES 50- 250mm / 2"- 10" ,
(LENGTH & HEIGHT DEFINABLE)**
SH - 950


TYPICAL PART NUMBER	AVAILABLE MATERIAL SHORT CODE	STD DETAIL TEMPERATURE LIMITATION	
		MAX. DESIGN TEMP	MIN. DESIGN TEMP
T-SH-101-(DN)-SS/CS (CS BOTTOM PLATE) #A=(DIM)H=(DIM)	SS / CS	350°c	- 20 °c
T-SH-950-(DN)-CS #A=(DIM)H=(DIM)	CS	350°c	-20 °c
T-SH-950-(DN)-LCS #A=(DIM)H=(DIM)	LCS	350°c	-46 °c
T-SH-950-(DN)-SS #A=(DIM)H=(DIM)	SS	350°c	-196°c (-105°c) (Refer Note)
T-SH-950-(DN)-Du #A=(DIM)H=(DIM)	Du	100°c (Operating)	- 46 °c
T-SH-950-(DN)-Ti #A=(DIM)H=(DIM)	Ti	350°c	- 196°c

TYPE	LINE SIZE			SHOE DIMENSIONS							WEIGHTS in kg
	DN (mm)	NPS in (inch)	NPS in (mm)	B	C	D	E	G	R	T	CS
T-SH-950-0050	DN 50	2"	60.3	100	**	50	**	40	30	10	TBA
T-SH-950-0080	DN 80	3"	88.9	100	**	50	**	40	44	10	TBA
T-SH-950-0100	DN 100	4"	114.3	100	**	50	**	60	57	10	TBA
T-SH-950-0125	DN 125	5"	141.3	100	**	50	**	85	71	10	TBA
T-SH-950-0150	DN 150	6"	168.3	100	**	50	**	110	84	10	TBA
T-SH-950-0200	DN 200	8"	219.1	100	**	50	**	110	110	10	TBA
T-SH-950-0250	DN 250	10"	273.0	150	**	100	**	174	137	15	TBA

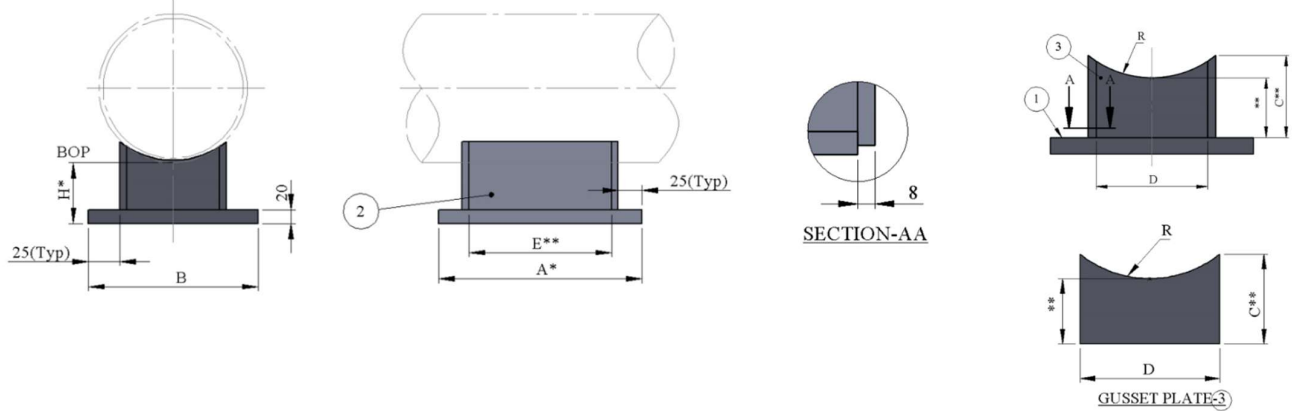
All welds to be a = 0.7 x W.T., but maximum 4mm CFW.
 This shoe to be used for lines with an anchor, line stop or high guide load restraints.
 All welded attachment welded direct to PWHT pipe need to be welded before PWHT.
 For standard shoe sizes see SH-201, SH-202 , SH-203 & SH-501 , SH-502 ,SH-503.
 Only dimension marked * (Length & Height) can vary from standard shoe sizes.
 Other effected dimensions marked ** to be calculated.
 Impact Test Req'd. for the below min design temperature.
 for Matl. Code SS (-)196° c , for Matl. Code LCS , & DU (-)46°c

19.11 SPECIAL WELDED SHOE FOR CS, SS & ALLOY LINES 300- 1200mm / 12" - 48" , SH - 951 (LENGTH & HEIGHT DEFINABLE)


TYPICAL PART NUMBER	AVAILABLE MATERIAL SHORT CODE	STD DETAIL TEMPERATURE LIMITATION	
		MAX. DESIGN TEMP	MIN. DESIGN TEMP
T-SH-951-(DN)-SS/CS (CS BOTTOM PLATE) #A=(DIM)H=(DIM)	SS / CS	350°c	- 20 °c
T-SH-951-(DN)-CS #A=(DIM)H=(DIM)	CS	350°c	-20 °c
T-SH-951-(DN)-LCS #A=(DIM)H=(DIM)	LCS	350°c	-46 °c
T-SH-951-(DN)-SS #A=(DIM)H=(DIM)	SS	350°c	-196°c (-105°c) (Refer Note)
T-SH-951-(DN)-Du #A=(DIM)H=(DIM)	Du	100°c (Operating)	- 46 °c
T-SH-951-(DN)-Ti #A=(DIM)H=(DIM)	Ti	350°c	- 196°c

TYPE	LINE SIZE			SHOE DIMENSIONS			WEIGHTS in kg
	DN (mm)	NPS in (inch)	NPS in (mm)	B	C	R	CS / SS
T-SH-951-0300	DN 300	12"	323.8	250	**	162	TBA
T-SH-951-0350	DN 350	14"	355.6	300	**	178	TBA
T-SH-951-0400	DN 400	16"	406.4	350	**	203	TBA
T-SH-951-0450	DN 450	18"	457.2	350	**	229	TBA
T-SH-951-0500	DN 500	20"	508.0	400	**	254	TBA
T-SH-951-0550	DN 550	22"	558.8	400	**	279	TBA
T-SH-951-0600	DN 600	24"	609.6	500	**	305	TBA
T-SH-951-0650	DN 650	26"	660.4	500	**	330	TBA
T-SH-951-0700	DN 700	28"	711.2	550	**	356	TBA
T-SH-951-0750	DN 750	30"	762.0	600	**	381	TBA
T-SH-951-0800	DN 800	32"	812.8	600	**	406	TBA
T-SH-951-0850	DN 850	34"	863.6	600	**	432	TBA
T-SH-951-0900	DN 900	36"	914.4	700	**	457	TBA
T-SH-951-0950	DN 950	38"	965.2	700	**	483	TBA
T-SH-951-1000	DN 1000	40"	1016.0	700	**	508	TBA
T-SH-951-1050	DN 1050	42"	1066.8	800	**	534	TBA
T-SH-951-1100	DN 1100	44"	1117.6	800	**	559	TBA
T-SH-951-1150	DN 1150	46"	1168.4	800	**	584	TBA
T-SH-951-1200	DN 1200	48"	1219.2	900	**	610	TBA

All welds to be a = 0.7 x W.T., but maximum 4mm CFW.
 This shoe to be used for lines with an anchor, line stop or high guide load restraints.
 All welded attachment welded direct to PWHT need to be welded before PWHT.
 For standard shoe sizes See SH-204, SH-205 , SH-206 & SH-504 , SH-505 ,SH-506.
 Only dimension marked * (Length & Height) can vary from standard shoe sizes.
 Other effected dimensions marked ** to be calculated.
 Impact Test Reqd. for the below min design temperature.
 for Matl. Code SS & 6Mo (-)196° c , for Matl. Code LCS , & DU (-)46°c

19.12 SPECIAL WELDED SHOE FOR CS, SS & ALLOY LINES 300- 1200mm / 12"- 48" , SH - 952 (LENGTH & HEIGHT DEFINABLE)


TYPICAL PART NUMBER	AVAILABLE MATERIAL SHORT CODE	STD DETAIL TEMPERATURE LIMITATION	
		MAX. DESIGN TEMP	MIN. DESIGN TEMP
T-SH-952-(DN)-SS/CS (CS BOTTOM PLATE) #A=(DIM)H=(DIM)	SS / CS	350°c	- 20 °c
T-SH-952-(DN)-CS #A=(DIM)H=(DIM)	CS	350°c	-20 °c
T-SH-952-(DN)-LCS #A=(DIM)H=(DIM)	LCS	350°c	-46 °c
T-SH-952-(DN)-SS #A=(DIM)H=(DIM)	SS	350°c	-196°c (-105°c) (Refer Note)
T-SH-952-(DN)-Du #A=(DIM)H=(DIM)	Du	100°c (Operating)	- 46 °c
T-SH-952-(DN)-Ti #A=(DIM)H=(DIM)	Ti	350°c	- 196°c

TYPE	LINE SIZE			SHOE DIMENSIONS						PLATE THICKNESS			WEIGHTS in kg
	DN (mm)	NPS in (inch)	NPS in (mm)	B	C	D	E	F	R	①	②	③	CS / SS
T-SH-952-0300	DN 300	12"	323.8	250	**	184	**	**	162	20	10	10	TBA
T-SH-952-0350	DN 350	14"	355.6	300	**	234	**	**	178	20	10	10	TBA
T-SH-952-0400	DN 400	16"	406.4	350	**	284	**	**	203	20	10	10	TBA
T-SH-952-0450	DN 450	18"	457.2	350	**	284	**	**	229	20	10	10	TBA
T-SH-952-0500	DN 500	20"	508.0	400	**	334	**	**	254	20	10	10	TBA
T-SH-952-0550	DN 550	22"	558.8	400	**	334	**	**	279	20	10	10	TBA
T-SH-952-0600	DN 600	24"	609.6	500	**	434	**	**	305	20	10	10	TBA
T-SH-952-0650	DN 650	26"	660.4	500	**	434	**	**	330	20	10	10	TBA
T-SH-952-0700	DN 700	28"	711.2	550	**	484	**	**	356	20	15	15	TBA
T-SH-952-0750	DN 750	30"	762.0	600	**	534	**	**	381	20	15	15	TBA
T-SH-952-0800	DN 800	32"	812.8	600	**	534	**	**	406	20	15	15	TBA
T-SH-952-0850	DN 850	34"	863.6	600	**	534	**	**	432	20	15	15	TBA
T-SH-952-0900	DN 900	36"	914.4	700	**	634	**	**	457	20	15	15	TBA
T-SH-952-0950	DN 950	38"	965.2	700	**	634	**	**	483	20	15	15	TBA
T-SH-952-1000	DN 1000	40"	1016.0	700	**	634	**	**	508	20	15	15	TBA
T-SH-952-1050	DN 1050	42"	1066.8	800	**	734	**	**	534	20	15	15	TBA
T-SH-952-1100	DN 1100	44"	1117.6	800	**	734	**	**	559	20	15	15	TBA
T-SH-952-1150	DN 1150	46"	1168.4	800	**	734	**	**	584	20	15	15	TBA
T-SH-952-1200	DN 1200	48"	1219.2	900	**	834	**	**	610	20	15	15	TBA

All welds to be a = 0.7 x W.T., but maximum 4mm CFW.
 This shoe to be used for lines with an anchor, line stop or high guide load restraints.
 All welded attachment welded direct to PWHT pipe need to be welded before PWHT.
 For standard shoe sizes See SH-207, SH-208 , SH-209 & SH-507 , SH-508 ,SH-509.
 Only dimension marked * (Length & Height) can vary from standard shoe sizes.
 Other effected dimensions marked ** to be calculated.
 Impact Test Reqd. for the below min design temperature.
 for Matl. Code SS & 6Mo (-)196° c , for Matl. Code LCS , & DU (-)46°c