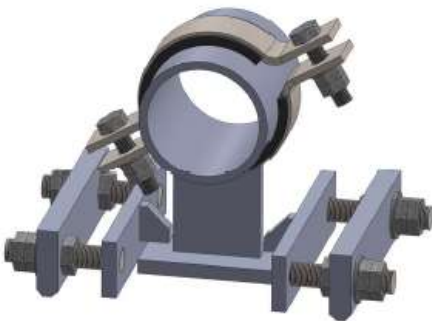
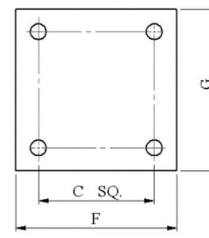
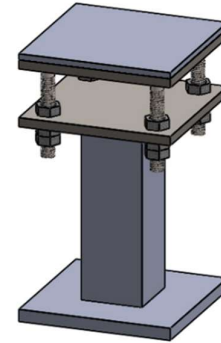
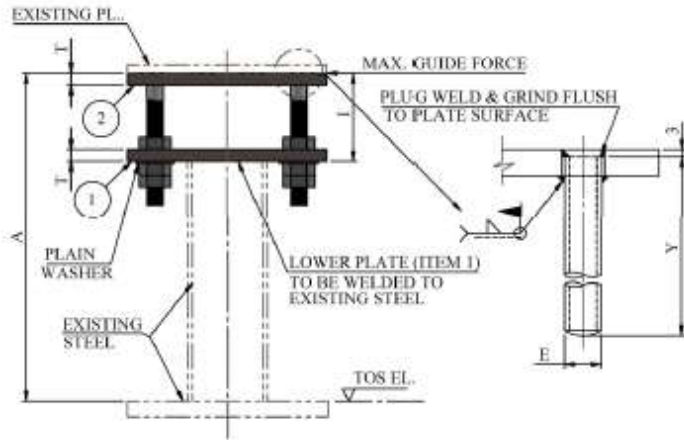


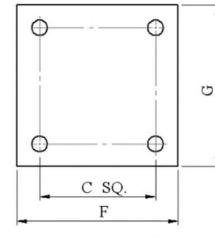
2. ADJUSTABLE UNITS
2.1
**T-AU-001
SQUARE ADJUSTABLE UNITS**

2.2
**T-AU-002
RECTANGULAR ADJUSTABLE UNITS**

2.3
**T-AU-998
SPECIAL ADJUSTABLE LINE GUIDE /
HOLD DOWN**


2.1 SQUARE ADJUSTABLE UNIT
AU-001


LOWER PLATE ①

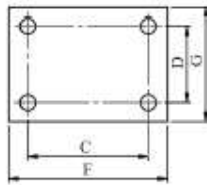
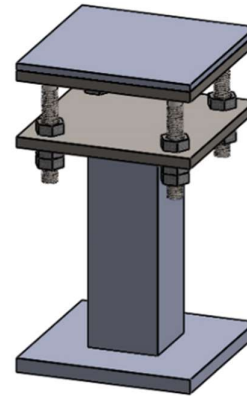
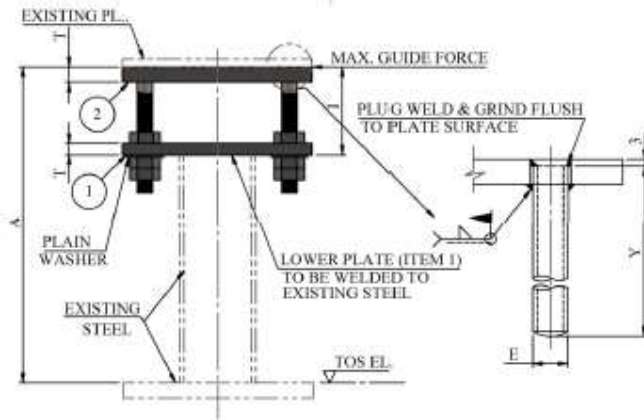


TOP PLATE ②

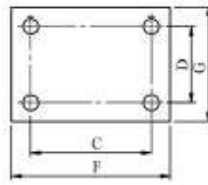
TYPICAL PART NUMBER	AVAILABLE MATERIAL SHORT CODE	STD DETAIL TEMPERATURE LIMITATION	
		MAX. DESIGN TEMP	MIN. DESIGN TEMP
T-AU-001-000A-SS	SS	350°C	-196°C (-105°C) (Refer Note)
T-AU-001-000A-CS	CS	350°C	-20°C
T-AU-001-000A-LCS	LCS	350°C	-46°C
T-AU-001-000A-LD	LD	350°C	-46°C

TYPE	LINE SIZE		ITEM 1 : LOWER PLATE			BOLT CTRS.	SET BOLTS SIZE x LENGTH		HOLE DIA.	INST. HEIGHT	MAX. GUIDE FORCE (kN)		WEIGHTS (in kg)	
	PIPE	RHS									CS	SS		
	OD x WT	TYPE	F	G	T	C	E	Y	mm	I			CS	SS
AU-001-000A	60.3 x 3.91	RHS 60 x 60 x 5	150	150	15	90	M16	130	18	75	5.2	3	5	6.1
AU-001-000B	114.3 x 6.02	RHS 100 x 100 x 6	200	200	15	130	M20	130	22	80	9.8	5.8	9	11
AU-001-000C	168.3 x 7.11	RHS 150 x 150 x 6	250	250	15	180	M20	130	22	80	9.8	5.8	11	15
AU-001-000D	219.1 x 6.35	RHS 200 x 200 x 10	300	300	20	230	M24	160	26	100	14	8.2	29	30.5
AU-001-000E	273.1 x 6.35	RHS 250 x 250 x 10	350	350	20	270	M24	160	26	100	14	8.2	39	40
AU-001-000F	323.9 x 6.35	RHS 300 x 300 x 10	400	400	20	310	M24	160	26	100	14	8.2	51	52
AU-001-000G	355.6 x 7.92	RHS 300 x 300 x 10	450	450	20	340	M24	160	26	100	14	8.2	64	65
AU-001-000H	406.4 x 7.92	RHS 300 x 300 x 10	500	500	20	380	M30	170	33	100	26	15.3	80	85
AU-001-000I	452 x 7.92	RHS 300 x 300 x 10	550	550	20	420	M30	170	33	110	26	15.3	96	97
AU-001-000J	508 x 9.53	RHS 300 x 300 x 10	600	600	20	470	M30	170	33	110	26	15.3	114	116

All Welds to be a = 0.7 x Plate Thickness, but max 4 mm CFW.
 Minimum Dimension A = DIM Y + 53mm.
 Top Plate to have Same Size as the Lower Plate.
 Bolt Quality to be ANSI A4-80 SS (SS DETAIL) and ASTM A 193 Grade B7 (CS Detail).
 Std. Type includes all bolts , plain washers and triple nuts . Bolts to have a minimum overlength of 3 Threads.
 Impact Test Reqd. for the below min design temp.
 For Matl. Code SS (-)196°C , For Matl. Code LCS (-)46°C.

2.2 RECTANGULAR ADJUSTABLE UNIT
AU-002


LOWER PLATE ①

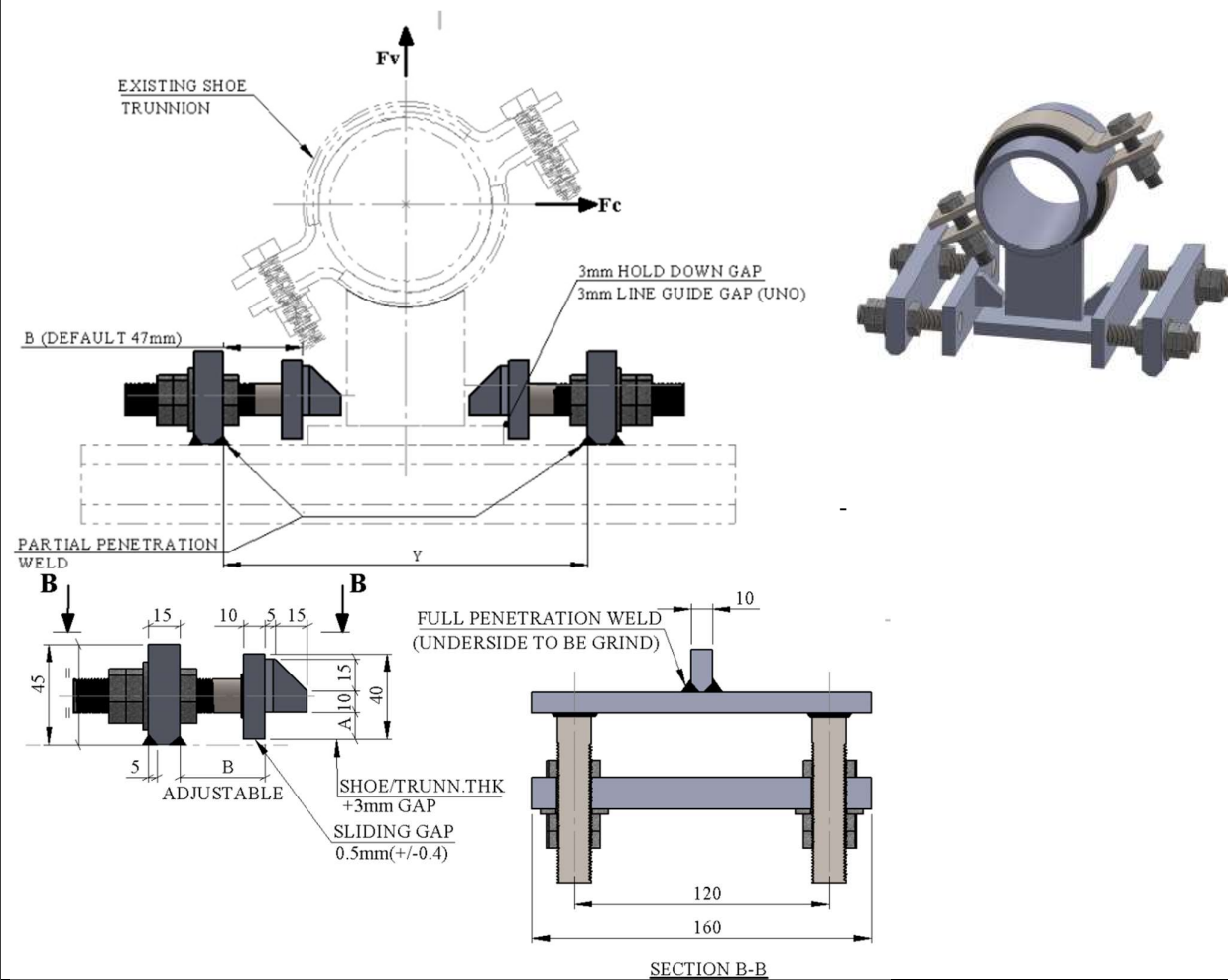


TOP PLATE ②

TYPICAL PART NUMBER	AVAILABLE MATERIAL SHORT CODE	STD DETAIL TEMPERATURE LIMITATION	
		MAX. DESIGN TEMP	MIN. DESIGN TEMP
T-AU-002-000A-SS	SS	350°c	-196°c (-105°c) (Refer Note)
T-AU-002-000A-CS	CS	350°c	-20°c
T-AU-002-000A-LCS	LCS	350°c	-46°c
T-AU-002-000A-LD	LD	350°c	-46°c

TYPE	ITEM 1 : LOWER PLATE			BOLT CTRS.		SET BOLTS SIZE x LENGTH		HOLE DIA.	INSTALLED HEIGHT	MAX. GUIDE FORCE (kN)		WEIGHTS in kg	
	F	G	T	C	D	E	Y	mm	I	CS	SS	CS	SS
AU-002-000A	250	180	20	190	120	M20	160	22	100	9.8	5.8	14	14.5
AU-002-000B	290	180	20	230	120	M24	160	26	100	14	8.2	17	17.5
AU-002-000C	350	180	20	290	120	M24	160	26	100	14	8.2	20	22
AU-002-000D	400	180	20	340	120	M24	160	26	100	14	8.2	23	25.5

All Welds to be a = 0.7 x Plate Thickness, but max 4 mm CFW.
 Minimum Dimension A = DIM Y + 53mm.
 Top Plate to have Same Size as the Lower Plate.
 Bolt Quality to be ANSI A4-80SS (SS Matl. Code) and ASTM A 193 Grade B7 (CS Matl. Code).
 Std. Type includes all bolts , plain washers and triple nuts . Bolts to have a minimum overlength of 3 Thread.
 Impact Test Reqd. for the below min design temp.
 For Matl. Code SS (-)196° c , For Matl. Code LCS & LD (-)46°c.

2.3 SPECIAL ADJUSTABLE LINE GUIDE / HOLD DOWN
AU-998


TYPICAL PART NUMBER	AVAILABLE MATERIAL SHORT CODE	STD DETAIL TEMPERATURE LIMITATION	
		MAX. DESIGN TEMP	MIN. DESIGN TEMP
T-AU-998-000A-SS	SS	350°C	-196°C (-105°C) (Refer Note)
T-AU-998-000A-CS	CS	350°C	-20°C
T-AU-998-000A-LCS	LCS	350°C	-46 °C
T-AU-998-000A-LD	LD	350°C	-46 °C

TYPE	BOLTING INFORMATION	A	MAX. ULS (kN)		MAX. BLAST (kN)		WEIGHTS (in kg)
			Fv	Fc	Fv	Fc	
			SS				
T-AU-998-000A	2 OFF M16 STUDBOLTS x 100mm LONG WITH TRIPPLE NUTS	12,5mm	11,5	15	28,5	35	3
T-AU-998-000B	2 OFF M16 STUDBOLTS x 100mm LONG WITH TRIPPLE NUTS	17,5mm	11,5	22	28,5	51	3

For material specification see pipe support work Instruction.
 All Welds to be a = 0.7 x plate thickness, but max 4 mm CFW (U.N.O).
 Std. type includes all bolts , plain washers and Triple nuts (to be ANSI A4-80SS).
 Maximum ULS and Blast is Load Capacity set for both SS and LD Type.
 Impact Test Req'd. for the below min design temp.
 For Matl. Code SS (-)196° c , For Matl. Code LCS & LD (-)46°c