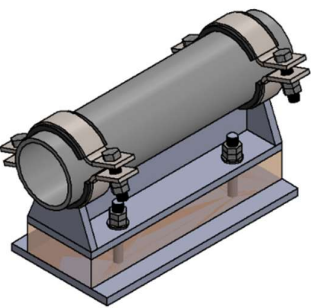
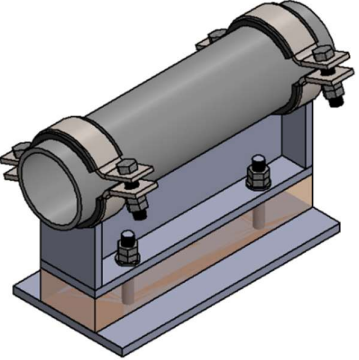
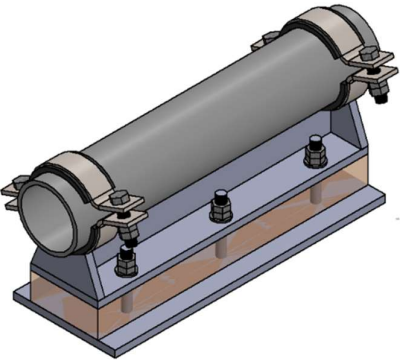
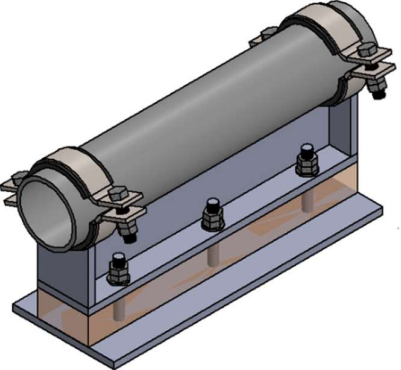
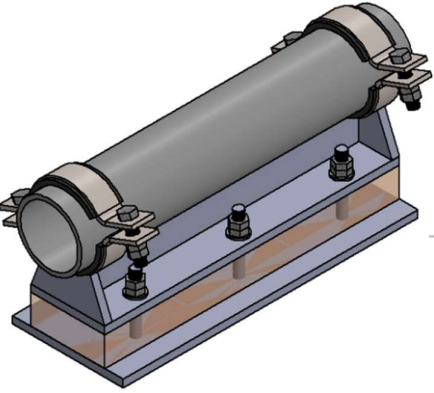
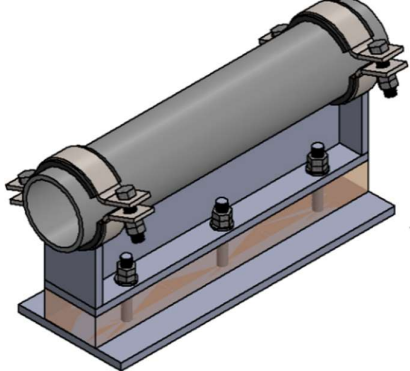
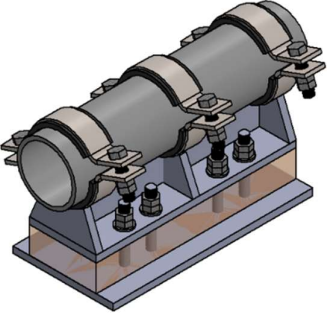
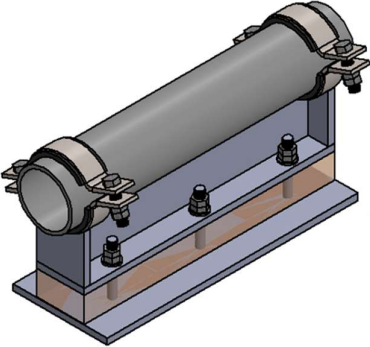
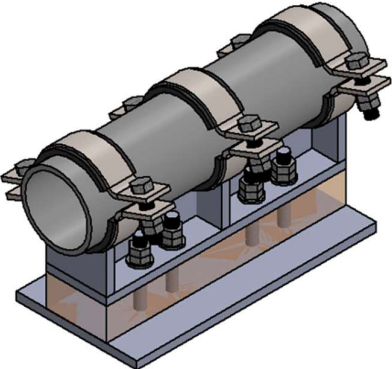
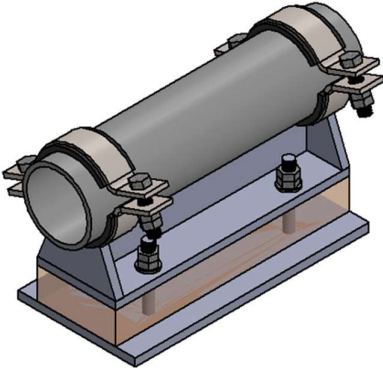
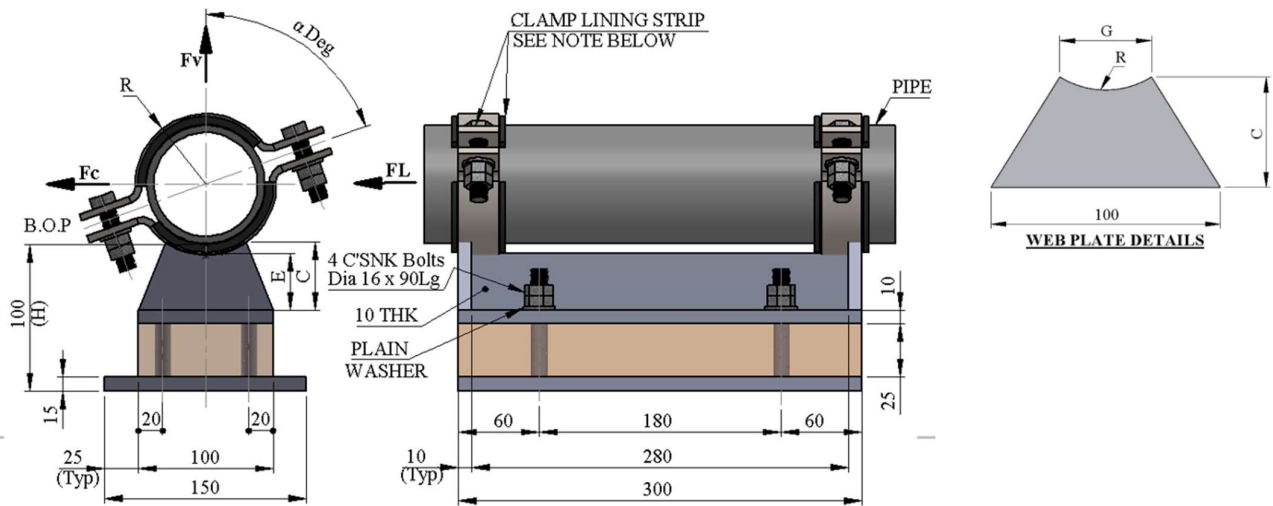


20	COLD SERVICE CLAMPED SHOE	
20.1	<p><b>T-SH-015</b>  <b>COLD SERVICE CLAMPED SHOE FOR CS , SS &amp; ALLOY LINES 50 – 200 mm / 2 “ - 8” (100 HIGH - 300 LONG)</b></p> 	<p><b>20.4</b>      <b>T-SH-018</b>  <b>COLD SERVICE CLAMPED SHOE FOR CS , SS &amp; ALLOY LINES 10 “ - 24” - 300 LONG</b></p> 
20.2	<p><b>T-SH-016</b>  <b>COLD SERVICE CLAMPED SHOE FOR CS , SS &amp; ALLOY LINES 2 “ - 8” - 400 LONG</b></p> 	<p><b>20.5</b>      <b>T-SH-019</b>  <b>COLD SERVICE CLAMPED SHOE FOR CS , SS &amp; ALLOY LINES 10 “ - 24” - 400 LONG</b></p> 
20.3	<p><b>T-SH-017</b>  <b>COLD SERVICE CLAMPED SHOE FOR CS , SS &amp; ALLOY LINES 2 “ - 8” - 500 LONG</b></p> 	<p><b>20.6</b>      <b>T-SH-020</b>  <b>COLD SERVICE CLAMPED SHOE FOR CS , SS &amp; ALLOY LINES 10 “ - 24” - 500 LONG)</b></p> 

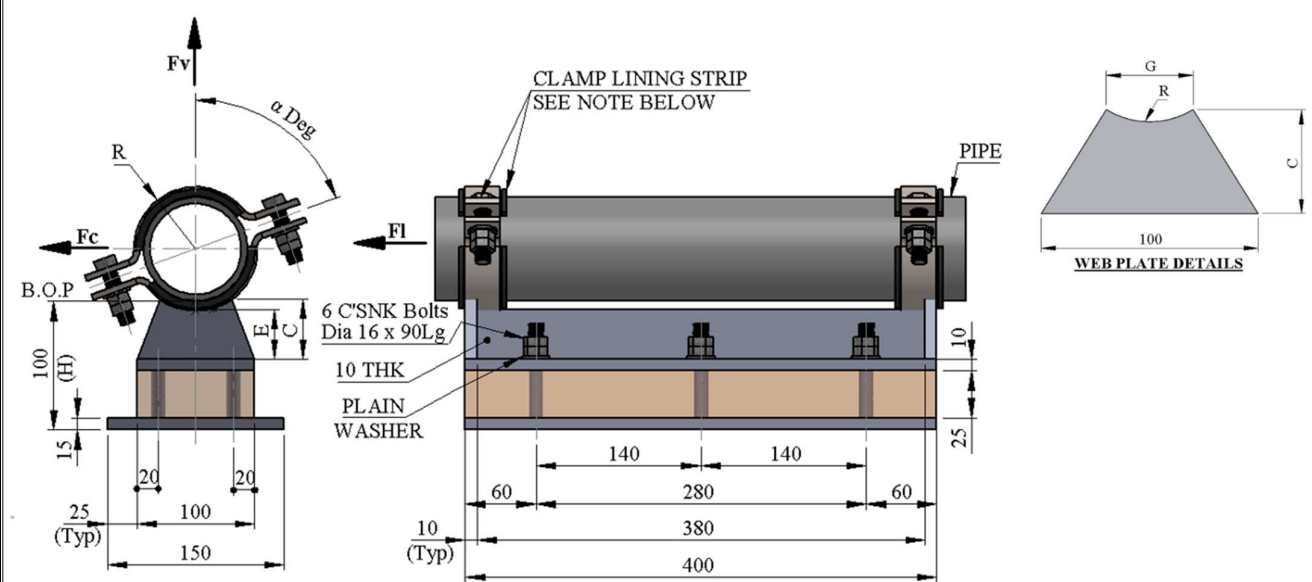
<p>20.7</p>	<p><b>T-SH-806</b>  <b>SPECIAL COLD SERVICE 3 CLAMPED</b>  <b>SHOE FOR CS , SS &amp; ALLOY LINES- 2"-8"</b></p> 	<p>20.9</p>	<p><b>T-SH-917</b>  <b>SPECIAL COLD SERVICE CLAMPED SHOE</b>  <b>FOR CS , SS &amp; ALLOY LINES-10"-24"</b></p> 
<p>20.8</p>	<p><b>T-SH-807</b>  <b>SPECIAL COLD SERVICE 3 CLAMPED</b>  <b>SHOE FOR CS , SS &amp; ALLOY LINES-10"-</b>  <b>24"</b></p> 	<p>20.10</p>	<p><b>T-SH-916</b>  <b>SPECIAL COLD SERVICE CLAMPED SHOE</b>  <b>FOR CS , SS &amp; ALLOY LINES-2"-8"</b></p> 

**20.1 COLD SERVICE CLAMPED SHOE FOR CS, SS & ALLOY LINES 50 – 200 mm / 2" - 8"**  
**(100mm HIGH - 300mm LONG)**
**SH - 015**


TYPICAL PART NO NUMBER	AVAILABLE MATERIAL SHORT CODE	STD DETAIL TEMPERATURE LIMITATION	
		MAX. DESIGN TEMP.	MIN. DESIGN TEMP
T-SH-015-(DN)-SS/CS (CS BOTTOM PLATE)	SS / CS	250 °C	(-) 100 °C
T-SH-015-(DN)-SS	SS	250 °C	(-) 100 °C

TYPE	LINE SIZE			SHOE DIMENSIONS				CLAMP INFO			MAXIMUM LOADS (in kN)			WEIGHTS in kg
	DN (mm)	NPS in (inch)	NPS in (mm)	C	E	G	R	TYPE	NO. OFF	α°	Fv	Fc	Fl	SS
T-SH-015-0050	DN 50	2"	60.3	48	42	40	38	T-PC-033	2	90	5.5	4	1.5	11.3
T-SH-015-0080	DN 80	3"	88.9	51	42	60	52	T-PC-033	2	75	5.5	4	1.5	11.7
T-SH-015-0100	DN 100	4"	114.3	48	51	60	66	T-PC-033	2	70	5.5	5.5	2	13.0
T-SH-015-0125	DN 125	5"	141.3	47	41	60	79	T-PC-033	2	60	5.5	5.5	2	13.5
T-SH-015-0150	DN 150	6"	168.3	42	37	60	97	T-PC-033	2	70	8.7	8.7	5	16.4
T-SH-015-0200	DN 200	8"	219.1	41	37	60	122	T-PC-033	2	60	8.7	8.7	5	17.5

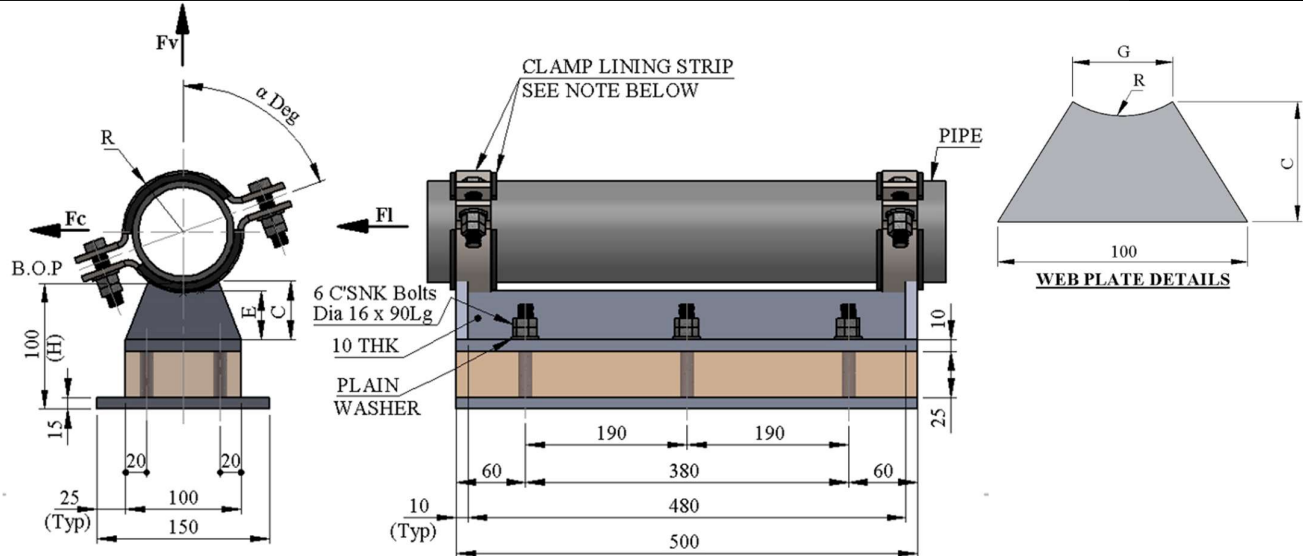
Shoe construction / insulation material shall be subject to project approval.  
 All welds to be a = 0.7 x W.T., but maximum 4mm CFW  
 Blocks must be supported over at least 25% of base  
 Bolts to be according to ISO 10642 SS A4 80 (Full Threaded), & Nuts SS A4 80  
 Provide clamp lining between pipe and clamp (Ref. MI-012)  
 Std. type includes all bolts, plain washers, and double nuts. bolts to have a minimum over length of 3 Threads.

**20.2 COLD SERVICE CLAMPED SHOE FOR CS, SS & ALLOY LINES 50 – 200 mm / 2" – 8" (100 HIGH - 400 LONG)**
**SH - 016**


TYPICAL PART NO NUMBER	AVAILABLE MATERIAL SHORT CODE	STD DETAIL TEMPERATURE LIMITATION	
		MAX. DESIGN TEMP.	MIN. DESIGN TEMP
T-SH-016-(DN)-SS/CS (CS BOTTOM PLATE)	SS / CS	250 °C	(-) 100 °C
T-SH-016-(DN)-SS	SS	250 °C	(-) 100 °C

TYPE	LINE SIZE			SHOE DIMENSIONS				CLAMP INFO			MAXIMUM LOADS (in kN)			WEIGHTS in kg
	DN (mm)	NPS in (inch)	NPS in (mm)	C	E	G	R	TYPE	NO. OFF	$\alpha^\circ$	Fv	Fc	Fl	SS
T-SH-016-0050	DN 50	2"	60.3	48	42	40	38	T-PC-033	2	90	5.5	4	1.5	14.6
T-SH-016-0080	DN 80	3"	88.9	51	42	60	52	T-PC-033	2	75	5.5	4	1.5	14.9
T-SH-016-0100	DN 100	4"	114.3	48	51	60	66	T-PC-033	2	70	5.5	5.5	2	16.3
T-SH-016-0125	DN 125	5"	141.3	47	41	60	79	T-PC-033	2	60	5.5	5.5	2	16.7
T-SH-016-0150	DN 150	6"	168.3	42	37	60	97	T-PC-033	2	70	8.7	8.7	5	19.7
T-SH-016-0200	DN 200	8"	219.1	41	37	60	122	T-PC-033	2	60	8.7	8.7	5	20.8

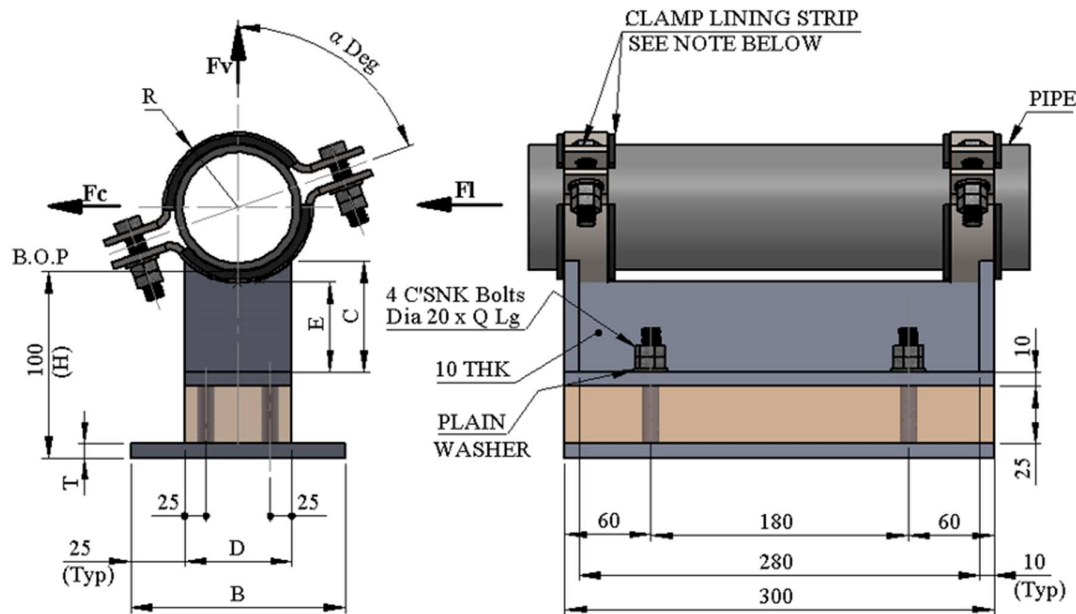
Shoe construction / insulation material shall be subject to project approval.  
 All welds to be a = 0.7 x W.T., but maximum 4mm CFW.  
 Blocks must be supported over at least 25% of base.  
 Bolts to be according to ISO 10642 SS A4 80 (Full Threaded), & Nuts SS A4 80  
 Provide clamp lining between pipe and clamp (Ref. MI-012).  
 Std. type includes all bolts, plain washers, and double nuts. bolts to have a minimum over length of 3 Threads.

**20.3 COLD SERVICE CLAMPED SHOE FOR CS , SS & ALLOY LINES 50 – 200 mm / 2 “ - 8”  
(100 HIGH - 500 LONG)**
**SH-017**


TYPICAL PART NUMBER	AVAILABLE MATERIAL SHORT CODE	STD DETAIL TEMPERATURE LIMITATION	
		MAX. DESIGN TEMP.	MIN. DESIGN TEMP
T-SH-017-(DN)-SS/CS (CS BOTTOM PLATE)	SS / CS	250 °C	(-) 100 °C
T-SH-017-(DN)-SS	SS	250 °C	(-) 100 °C

TYPE	LINE SIZE			SHOE DIMENSIONS				CLAMP INFO			MAXIMUM LOADS (in kN)			WEIGHTS in kg
	DN (mm)	NPS in (inch)	NPS in (mm)	C	E	G	R	TYPE	NO. OFF	α°	Fv	Fc	Fl	SS
T-SH-017-0050	DN 50	2"	60.3	48	42	40	38	T-PC-033	2	90	5.5	4	1.5	17.73
T-SH-017-0080	DN 80	3"	88.9	51	42	60	52	T-PC-033	2	75	5.5	4	1.5	18.14
T-SH-017-0100	DN 100	4"	114.3	48	51	60	66	T-PC-033	2	70	5.5	5.5	2	19.46
T-SH-017-0125	DN 125	5"	141.3	47	41	60	79	T-PC-033	2	60	5.5	5.5	2	19.88
T-SH-017-0150	DN 150	6"	168.3	42	37	60	97	T-PC-033	2	70	8.7	8.7	5	22.79
T-SH-017-0200	DN 200	8"	219.1	41	37	60	122	T-PC-033	2	60	8.7	8.7	5	23.93

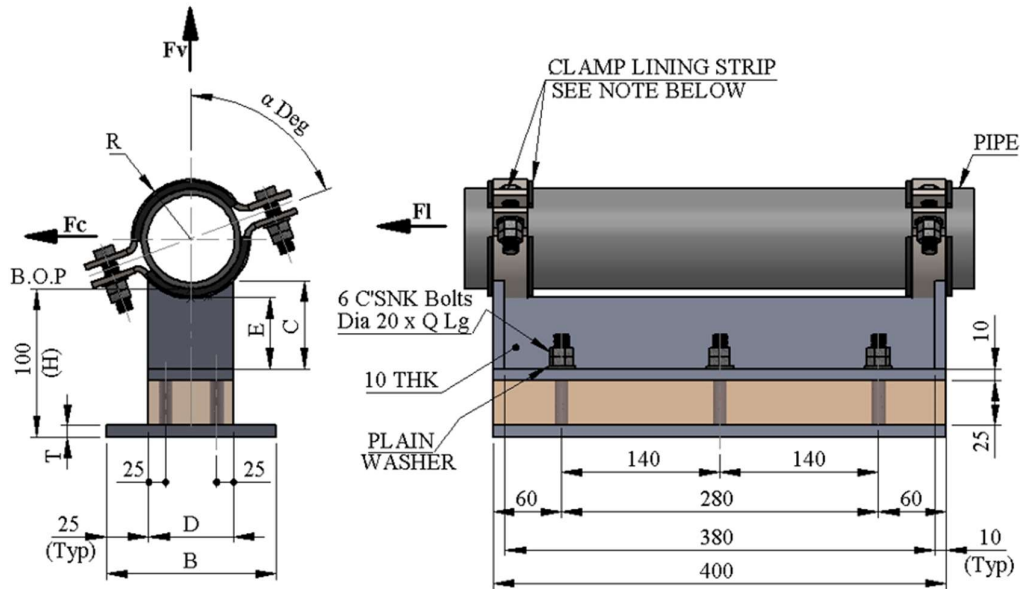
Shoe construction / insulation material shall be subject to project approval.  
 All welds to be a = 0.7 x W.T., but maximum 4mm CFW.  
 Blocks must be supported over at least 25% of base.  
 Bolts to be according to ISO 10642 SS A4 80 (Full Threaded), & Nuts SS A4 80  
 Provide clamp lining between pipe and clamp (Ref. MI-012).  
 Std. type includes all bolts, plain washers, and double nuts. bolts to have a minimum over length of 3 threads.

**20.4 COLD SERVICE CLAMPED SHOE FOR CS, SS & ALLOY LINES 250 – 600 mm / 10" – 24" (100 HIGH - 300 LONG)**
**SH - 018**


TYPICAL PART NUMBER	AVAILABLE MATERIAL SHORT CODE	STD DETAIL TEMPERATURE LIMITATION	
		MAX. DESIGN TEMP	MIN. DESIGN TEMP
T-SH-018-(DN)-SS/CS (CS BOTTOM PLATE)	SS / CS	250 °C	(-) 100 °C
T-SH-018-(DN)-SS	SS	250 °C	(-) 100 °C

TYPE	LINE SIZE			SHOE DIMENSIONS							CLAMP INFO			MAXIMUM LOADS (in kN) (SEE NOTE BELOW)			WEIGHTS in kg
	DN (mm)	NPS in (inch)	NPS in (mm)	B	C	D	E	Q	R	T	TYPE	NO. OFF	α°	Fv	Fc	FI	
T-SH-018-0250	DN 250	10"	273	200	55	150	35	100	151	15	T-PC-033	2	55	13	13	8	27.98
T-SH-018-0300	DN 300	12"	323.8	200	52	150	35	100	177	15	T-PC-033	2	50	13	13	8	29.48
T-SH-018-0350	DN 350	14"	355.6	250	63	200	35	100	193	15	T-PC-033	2	50	13	13	10	40.31
T-SH-018-0400	DN 400	16"	406.4	250	56	200	32	100	221	15	T-PC-033	2	45	13	13	10	42.25
T-SH-018-0450	DN 450	18"	457.2	300	66	250	32	100	247	15	T-PC-033	2	45	16.3	16.3	10	55.21
T-SH-018-0500	DN 500	20"	508	300	57	250	27	105	272	20	T-PC-033	2	45	16.3	16.3	10	58.15
T-SH-018-0600	DN 600	24"	609.6	300	52	250	27	105	323	20	T-PC-033	2	45	16.3	16.3	10	72.29

Shoe construction / insulation material shall be subject to project approval.  
 All welds to be a = 0.7 x W.T., but maximum 4mm CFW.  
 Blocks must be supported over at least 25% of base.  
 Bolts to be according to ISO 10642 SS A4 80 (Full Threaded), & Nuts SS A4 80  
 Provide clamp lining between pipe and clamp (Ref. MI-012).  
 Std. type includes all bolts, plain washers, and double nuts. Bolts to have a minimum over length of 3 threads.

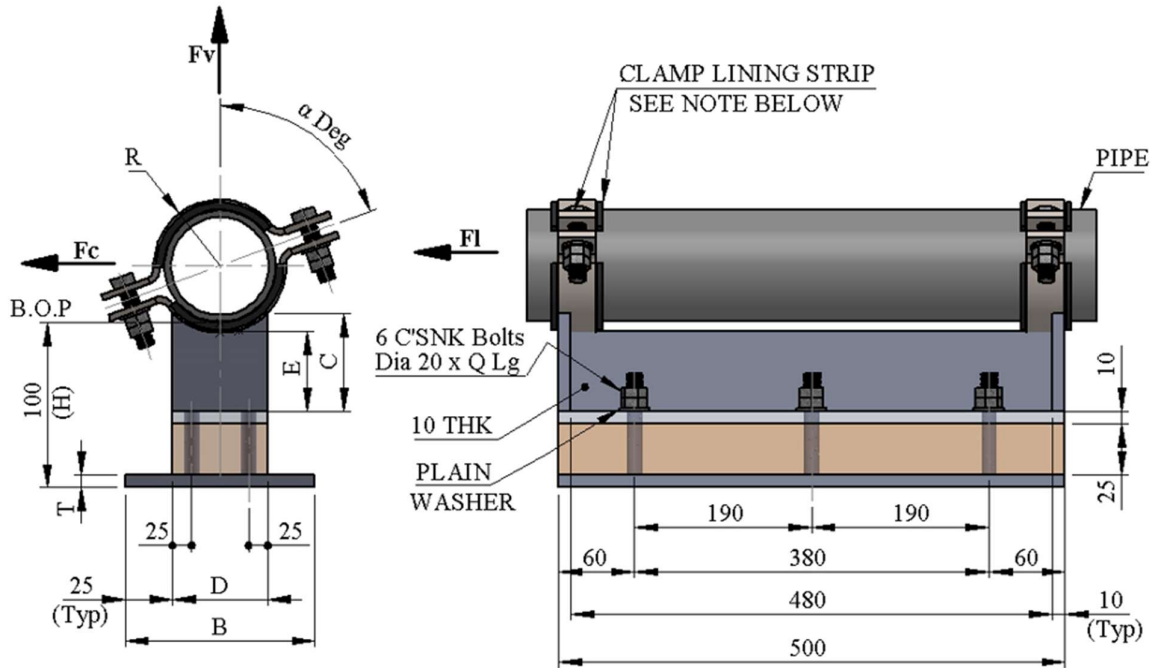
**20.5 COLD SERVICE CLAMPED SHOE FOR CS, SS & ALLOY LINES 250 – 600 mm / 10 “ -24” SH - 019 (100 HIGH - 400 LONG)**


TYPICAL PART NUMBER	AVAILABLE MATERIAL SHORT CODE	STD DETAIL TEMPERATURE LIMITATION	
		MAX. DESIGN TEMP	MIN. DESIGN TEMP
T-SH-019-(DN)-SS/CS (CS BOTTOM PLATE)	SS / CS	250 °C	(-) 100 °C
T-SH-019-(DN)-SS	SS	250 °C	(-) 100 °C

TYPE	LINE SIZE			SHOE DIMENSIONS							CLAMP INFO			MAXIMUM LOADS (in kN)			WEIGHTS in kg
	DN (mm)	NPS in (inch)	NPS in (mm)	B	C	D	E	Q	R	T	TYPE	NO. OFF	$\alpha^\circ$	Fv	Fc	Fl	
T-SH-019-0250	DN 250	10"	273	200	55	150	35	100	151	15	T-PC-033	2	55	13	13	8	32.8
T-SH-019-0300	DN 300	12"	323.8	200	52	150	35	100	177	15	T-PC-033	2	50	13	13	8	34.3
T-SH-019-0350	DN 350	14"	355.6	250	63	200	35	100	193	15	T-PC-033	2	50	13	13	10	46.3
T-SH-019-0400	DN 400	16"	406.4	250	56	200	32	100	221	15	T-PC-033	2	45	13	13	10	48.3
T-SH-019-0450	DN 450	18"	457.2	300	66	250	32	100	247	15	T-PC-033	2	45	16.3	16.3	10	62.5
T-SH-019-0500	DN 500	20"	508	300	57	250	27	105	272	20	T-PC-033	2	45	16.3	16.3	10	65.4
T-SH-019-0600	DN 600	24"	609.6	300	52	250	27	105	323	20	T-PC-033	2	45	16.3	16.3	10	79.6

Shoe construction / insulation material shall be subject to project approval.  
 All welds to be  $a = 0.7 \times W.T.$ , but maximum 4mm CFW.  
 Blocks must be supported over at least 25% of base.  
 Bolts to be according to ISO 10642 SS A4 80 (Full Threaded), & Nuts SS A4 80  
 Provide clamp lining between pipe and clamp (Ref. MI-012)  
 Std. type includes all bolts, plain washers, and double nuts. bolts to have a minimum over length of 3 threads.



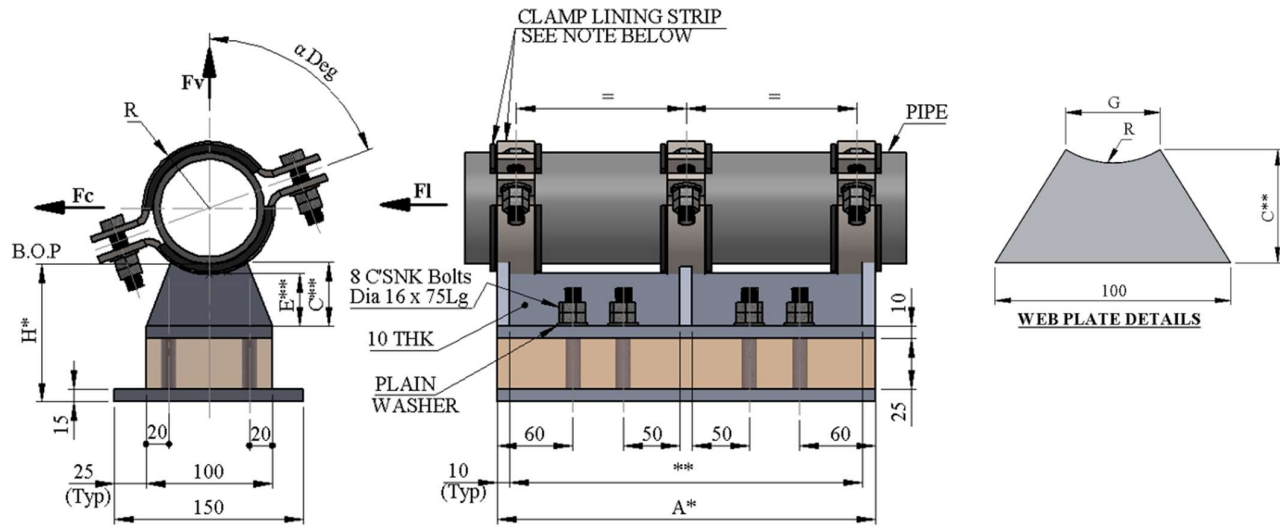
**20.6 COLD SERVICE CLAMPED SHOE FOR CS, SS & ALLOY LINES 250 – 600 mm / 10 “ 24” SH - 020 (100 HIGH - 500 LONG)**


TYPICAL PART NUMBER	AVAILABLE MATERIAL SHORT CODE	STD DETAIL TEMPERATURE LIMITATION	
		MAX. DESIGN TEMP	MIN. DESIGN TEMP
T-SH-020-(DN)-SS/CS (CS BOTTOM PLATE)	SS / CS	250 °C	(-) 100 °C
T-SH-020-(DN)-SS	SS	250 °C	(-) 100 °C

TYPE	LINE SIZE			SHOE DIMENSIONS							CLAMP INFO			MAXIMUM LOADS (in kN)			WEIGHTS in kg
	DN (mm)	NPS in (inch)	NPS in (mm)	B	C	D	E	Q	R	T	TYPE	NO. OFF	α°	Fv	Fc	FI	
T-SH-020-0250	DN 250	10"	273	200	55	150	35	100	151	15	T-PC-033	2	55	13	13	8	37.1
T-SH-020-0300	DN 300	12"	323.8	200	52	150	35	100	177	15	T-PC-033	2	50	13	13	8	38.6
T-SH-020-0350	DN 350	14"	355.6	250	63	200	35	100	193	15	T-PC-033	2	50	13	13	10	51.9
T-SH-020-0400	DN 400	16"	406.4	250	56	200	32	100	221	15	T-PC-033	2	45	13	13	10	53.8
T-SH-020-0450	DN 450	18"	457.2	300	66	250	32	100	247	15	T-PC-033	2	45	16.3	16.3	10	69.2
T-SH-020-0500	DN 500	20"	508	300	57	250	27	105	272	20	T-PC-033	2	45	16.3	16.3	10	72.2
T-SH-020-0600	DN 600	24"	609.6	300	52	250	27	105	323	20	T-PC-033	2	45	16.3	16.3	10	86.3

Shoe construction / insulation material shall be subject to project approval.  
 All welds to be a = 0.7 x W.T., but maximum 4mm CFW.  
 Blocks must be supported over at least 25% of base.  
 Bolts to be according to ISO 10642 SS A4 80 (Full Threaded), & Nuts SS A4 80  
 Provide clamp lining between pipe and clamp (Ref. MI-012)  
 Std. type includes all bolts, plain washers and double nuts. Bolts to have a minimum over length of 3 threads.

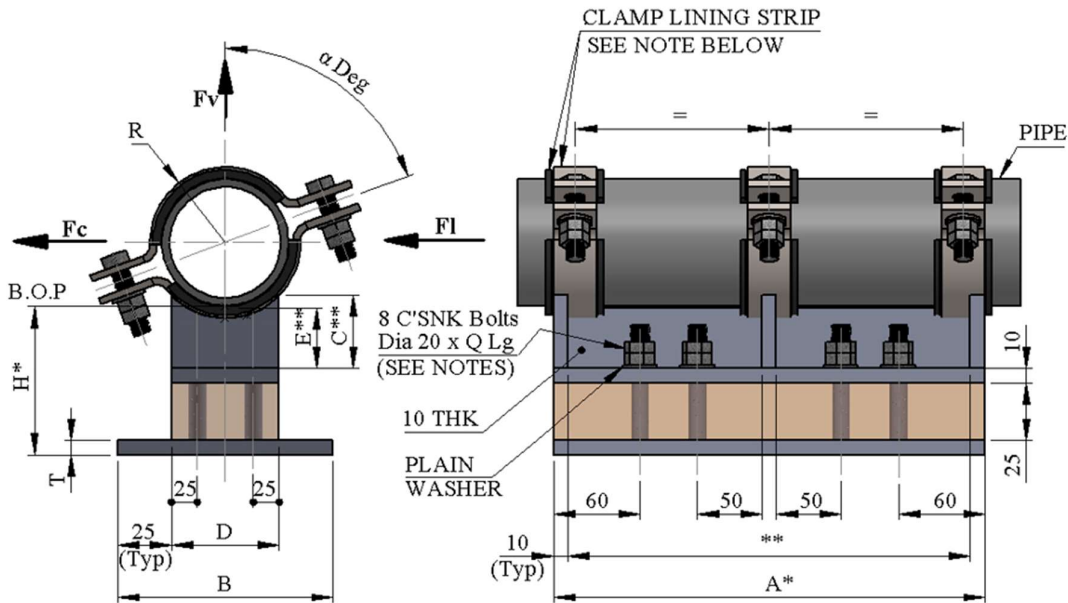


**20.7 SPECIAL COLD SERVICE 3 CLAMPED SHOE FOR CS , SS & ALLOY LINES  
50 – 200 mm / 2 “ - 8” (LENGTH & HEIGHT DEFINABLE)**
**SH - 806**


TYPICAL PART NUMBER	AVAILABLE MATERIAL SHORT CODE	STD DETAIL TEMPERATURE LIMITATION	
		MAX. DESIGN TEMP.	MIN. DESIGN TEMP
T-SH-806-(DN)-CS#A=(DIM)H=(DIM)	CS	250 °C	(-) 100 °C
T-SH-806-(DN)-SS/CS#A=(DIM)H=(DIM) (CS BOTTOM PLATE)	SS / CS	250 °C	(-) 100 °C
T-SH-806-(DN)-SS#A=(DIM)H=(DIM)	SS	250 °C	(-) 100 °C

TYPE	LINE SIZE			SHOE DIMENSIONS				CLAMP INFO			MAXIMUM LOADS (in kN)			WEIGHTS in kg
	DN (mm)	NPS in (inch)	NPS in (mm)	C	E	G	R	TYPE	N O. OF F	α°	Fv	Fc	FI	CS / SS
T-SH-806-0050	DN 50	2"	60.3	**	**	40	38	T-PC-033	3	90	5.5	4	1.5	TBA
T-SH-806-0080	DN 80	3"	88.9	**	**	60	52	T-PC-033	3	75	5.5	4	1.5	TBA
T-SH-806-0100	DN 100	4"	114.3	**	**	60	66	T-PC-033	3	70	5.5	5.5	2	TBA
T-SH-806-0125	DN 125	5"	141.3	**	**	60	79	T-PC-033	3	60	5.5	5.5	2	TBA
T-SH-806-0150	DN 150	6"	168.3	**	**	60	97	T-PC-033	3	70	8.7	8.7	5	TBA
T-SH-806-0200	DN 200	8"	219.1	**	**	60	122	T-PC-033	3	60	8.7	8.7	5	TBA

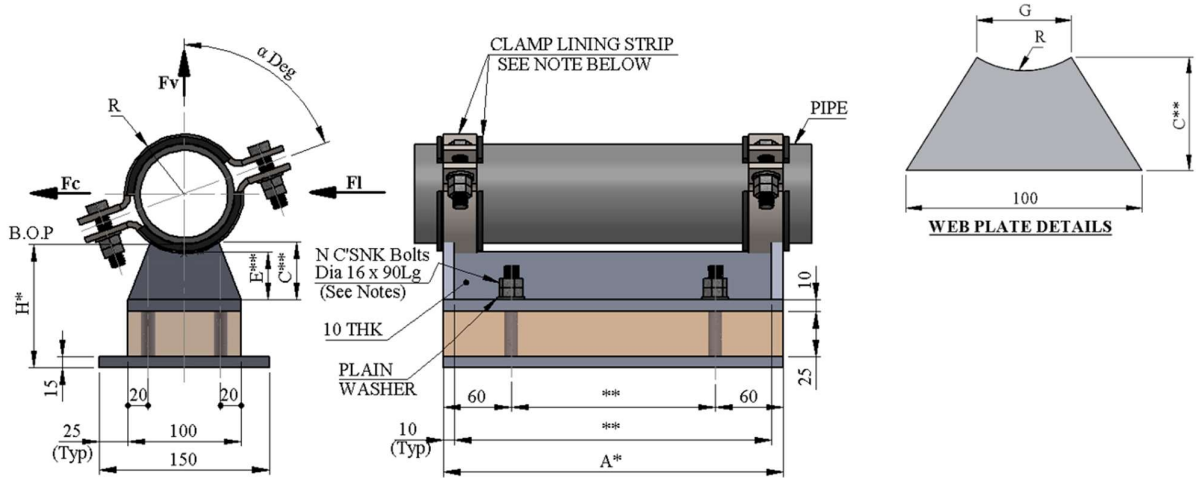
Shoe construction / insulation material shall be subject to project approval.  
 All welds to be a = 0.7 x W.T., but maximum 4mm CFW.  
 Blocks must be supported over at least 25% of base.  
 For standard shoe size see SH-015, 016, 017 & SH-315, 316, 317.  
 Only dimension marked \* (Length & Height) can vary from the standard shoe sizes. Dim A to be above 500mm.  
 Other effected dimensions marked \*\* to be calculated by manufacturer.  
 Bolts to be according to ISO 10642 SS A4 80 (Full Threaded), & Nuts SS A4 80  
 Bolting no. off.: if distance between bolts exceeds approx.. 400mm, add another set of bolts.  
 Std. type includes all bolts, plain washers and double nuts. bolts to have a minimum over length of 3 threads.  
 Provide clamp lining between pipe and clamp (Ref. MI-012).

**20.8 SPECIAL COLD SERVICE 3 CLAMPED SHOE FOR CS , SS & ALLOY LINES**  
**250 – 600 mm / 10 “ - 24” (LENGTH & HEIGHT DEFINABLE)**
**SH - 807**


TYPICAL PART NUMBER	AVAILABLE MATERIAL SHORT CODE	STD DETAIL TEMPERATURE LIMITATION	
		MAX. DESIGN TEMP	MIN. DESIGN TEMP
T-SH-807-(DN)-CS#A=(DIM)H=(DIM)	CS	250 °C	(-) 100 °C
T-SH-807-(DN)-SS/CS#A=(DIM)H=(DIM) (CS BOTTOM PLATE)	SS / CS	250 °C	(-) 100 °C
T-SH-807-(DN)-SS#A=(DIM)H=(DIM)	SS	250 °C	(-) 100 °C

TYPE	LINE SIZE			SHOE DIMENSIONS							CLAMP INFO			MAXIMUM LOADS (in kN)			WEIGHTS in kg
	DN (mm)	NPS in (inch)	NPS in (mm)	B	C	D	E	Q	R	T	TYPE	NO. OFF	α°	Fv	Fc	Fl	
T-SH-807-0250	DN 250	10"	273	200	**	150	**	80	151	15	T-PC-033	3	55	13	13	8	TBA
T-SH-807-0300	DN 300	12"	323.8	200	**	150	**	80	177	15	T-PC-033	3	50	13	13	8	TBA
T-SH-807-0350	DN 350	14"	355.6	250	**	200	**	80	193	15	T-PC-033	3	50	13	13	10	TBA
T-SH-807-0400	DN 400	16"	406.4	250	**	200	**	80	221	15	T-PC-033	3	45	13	13	10	TBA
T-SH-807-0450	DN 450	18"	457.2	300	**	250	**	80	247	15	T-PC-033	3	45	16.3	16.3	10	TBA
T-SH-807-0500	DN 500	20"	508	300	**	250	**	85	273	20	T-PC-033	3	45	16.3	16.3	10	TBA
T-SH-807-0600	DN 600	24"	609.6	300	**	250	**	85	323	20	T-PC-033	3	45	16.3	16.3	10	TBA

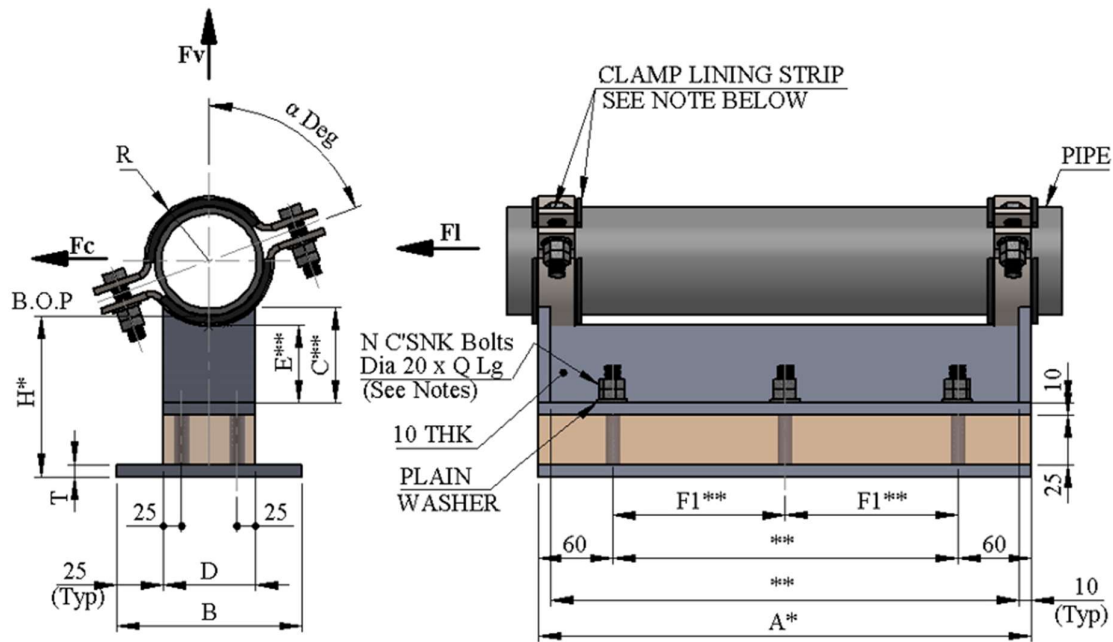
Shoe construction / insulation material shall be subject to project approval.  
 All welds to be a = 0.7 x W.T., but maximum 4mm CFW.  
 Blocks must be supported over at least 25% of base.  
 For standard shoe size see SH-018, 019, 020 & SH-318, 319, 320.  
 Only dimension marked \* (Length & Height) can vary from the standard shoe Sizes. Dim A to be above 500mm.  
 Other effected dimensions marked \*\* to be calculated by manufacturer.  
 Bolts to be according to ISO 10642 SS A4 80 (Full Threaded), & Nuts SS A4 80  
 Bolting no. off : if distance between bolts exceeds approx.. 400mm, add another set of bolts.  
 Bolting length (Dim Q): Refer back to nearest standard shoe for sizes.  
 Provide clamp lining between pipe and clamp (Ref. MI-012).  
 Std. type includes all bolts, plain washers, and double nuts. bolts to have a minimum over length of 3 threads.

**20.9 SPECIAL COLD SERVICE CLAMPED SHOE FOR CS, SS & ALLOY LINES**  
**50 – 200 mm / 2 “ - 8” (LENGTH & HEIGHT DEFINABLE)**
**SH-916**


TYPICAL PART NUMBER	AVAILABLE MATERIAL SHORT CODE	STD DETAIL TEMPERATURE LIMITATION	
		MAX. DESIGN TEMP.	MIN. DESIGN TEMP
T-SH-916-(DN)-SS/CS#A=(DIM)H=(DIM) (CS BOTTOM PLATE)	SS / CS	250 °C	(-) 100 °C
T-SH-916-(DN)-SS#A=(DIM)H=(DIM)	SS	250 °C	(-) 100 °C

TYPE	LINE SIZE			SHOE DIMENSIONS				CLAMP INFO			MAXIMUM LOADS (in kN)			WEIGHTS in kg
	DN (mm)	NPS in (inch)	NPS in (mm)	C	E	G	R	TYPE	NO. OFF	$\alpha^\circ$	Fv	Fc	FI	CS / SS
T-SH-916-0050	DN 50	2"	60.3	**	**	40	38	T-PC-033	2	90	5.5	4	1.5	TBA
T-SH-916-0080	DN 80	3"	88.9	**	**	60	52	T-PC-033	2	75	5.5	4	1.5	TBA
T-SH-916-0100	DN 100	4"	114.3	**	**	60	66	T-PC-033	2	70	5.5	5.5	2	TBA
T-SH-916-0125	DN 125	5"	141.3	**	**	60	79	T-PC-033	2	60	5.5	5.5	2	TBA
T-SH-916-0150	DN 150	6"	168.3	**	**	60	97	T-PC-033	2	70	8.7	8.7	5	TBA
T-SH-916-0200	DN 200	8"	219.1	**	**	60	122	T-PC-033	2	60	8.7	8.7	5	TBA

Shoe construction / insulation material shall be subject to project approval.  
 All welds to be a = 0.7 x W.T., but maximum 4mm CFW.  
 Blocks must be supported over at least 25% of base.  
 For standard shoe size see SH-015, 016, 017 & SH-315, 316, 317  
 Only dimension marked \* (Length & Height) can vary from the standard shoe sizes.  
 Other effected dimensions marked \*\* to be calculated by manufacturer.  
 Bolts to be according to ISO 10642 SS A4 80 (Full Threaded), & Nuts SS A4 80  
 Provide clamp lining between pipe and clamp (Ref. MI-012).  
 Bolting no. off: (Dim N) : 4 Off (DIM A 250 - 349) , 6 Off (DIM A350 - 549) , 8 Off (DIM A 550 & above)  
 Std. type includes all bolts, plain washers, and double nuts. bolts to have a minimum over length of 3 threads.

**20.10 SPECIAL COLD SERVICE CLAMPED SHOE FOR CS, SS & ALLOY LINES**  
**250 – 600 mm / 10 “ - 24”(LENGTH & HEIGHT DEFINABLE)**
**SH - 917**


TYPICAL PART NUMBER	AVAILABLE MATERIAL SHORT CODE	STD DETAIL TEMPERATURE LIMITATION	
		MAX. DESIGN TEMP	MIN. DESIGN TEMP
T-SH-917-(DN)-SS/CS#A=(DIM)H=(DIM) (CS BOTTOM PLATE)	SS / CS	250 °C	(-) 100 °C
T-SH-917-(DN)-SS#A=(DIM)H=(DIM)	SS	250 °C	(-) 100 °C

TYPE	LINE SIZE			SHOE DIMENSIONS								CLAMP INFO			MAXIMUM LOADS (in kN)			WEIGHTS in kg
	DN (mm)	NPS in (inch)	NPS in (mm)	B	C	D	E	F1	Q	R	T	TYPE	NO. OFF	α°	Fv	Fc	FI	
T-SH-917-0250	DN 250	10"	273	200	**	150	**	-	100	151	15	T-PC-033	2	55	13	13	8	TBA
T-SH-917-0300	DN 300	12"	323.8	200	**	150	**	-	100	177	15	T-PC-033	2	50	13	13	8	TBA
T-SH-917-0350	DN 350	14"	355.6	250	**	200	**	-	100	193	15	T-PC-033	2	50	13	13	10	TBA
T-SH-917-0400	DN 400	16"	406.4	250	**	200	**	-	100	221	15	T-PC-033	2	45	13	13	10	TBA
T-SH-917-0450	DN 450	18"	457.2	300	**	250	**	**	100	247	15	T-PC-033	2	45	16.3	16.3	10	TBA
T-SH-917-0500	DN 500	20"	508	300	**	250	**	**	105	273	20	T-PC-033	2	45	16.3	16.3	10	TBA
T-SH-917-0600	DN 600	24"	609.6	300	**	250	**	**	105	323	20	T-PC-033	2	45	16.3	16.3	10	TBA

Shoe construction / insulation material shall be subject to project approval.  
 All welds to be a = 0.7 x W.T., but maximum 4mm CFW.  
 Blocks must be supported over at least 25% of base.  
 For standard shoe size see SH-018, 019, 020 & SH-318, 319, 320.  
 Only dimension marked \* (Length & Height) can vary from the standard shoe Sizes. other effected dimensions marked \*\* to be calculated by manufacturer.  
 Bolts to be according to ISO 10642 SS A4 80 ( Full Threaded), & Nuts SS A4 80  
 Provide clamp lining between pipe and clamp (Ref. MI-012).  
 Bolting no. off: (Dim N) : 4 Off (DIM A 250 - 349), 6 Off (DIM A350 - 549), 8 Off (DIM A 550 & above)  
 Bolting length (Dim Q) : Refer back to nearest standard shoe for sizes.  
 Std. type includes all bolts, plain washers and double nuts. bolts to have a minimum over length of 3 threads.