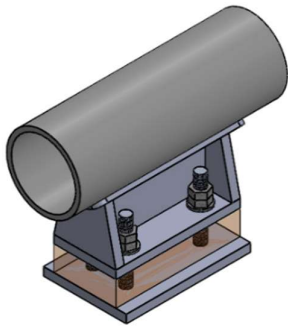
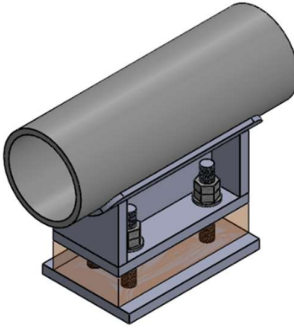
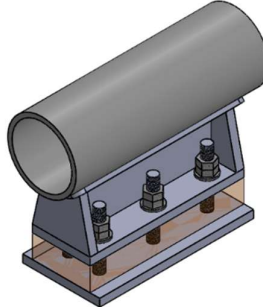
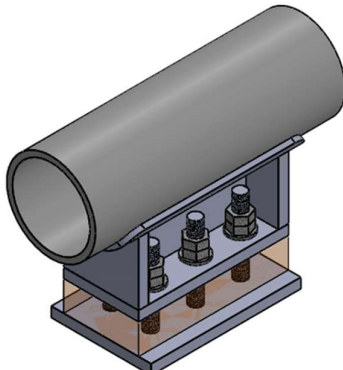
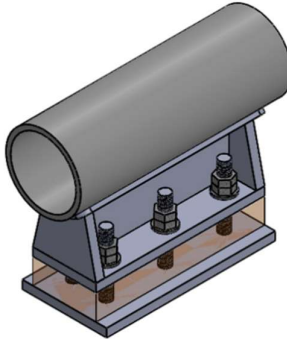
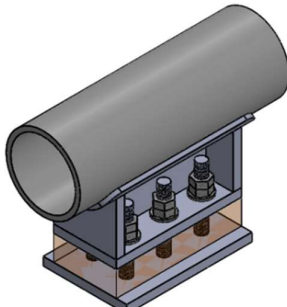
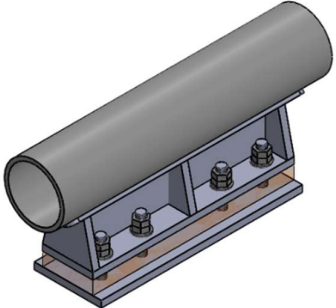
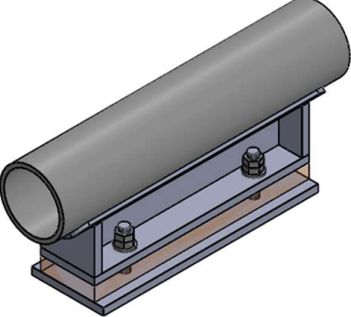
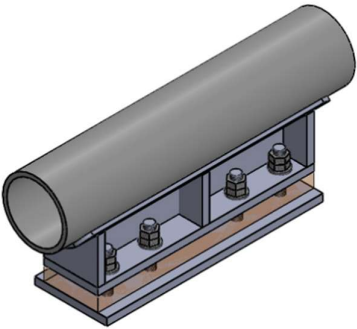
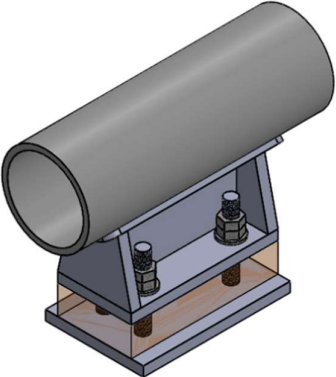
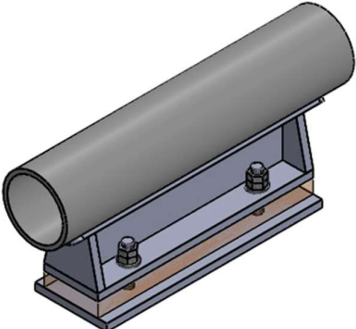
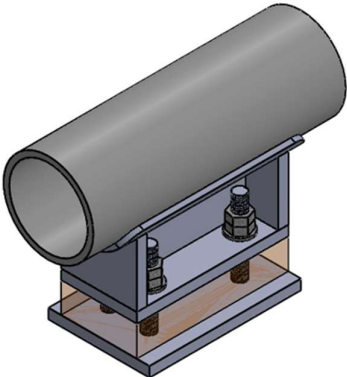
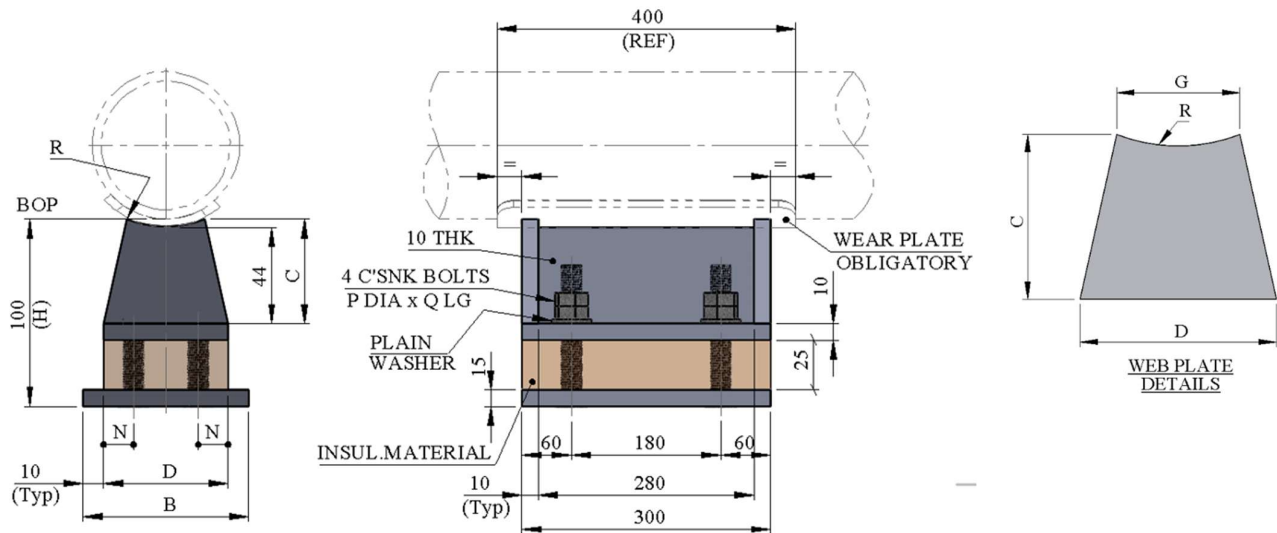


21	Cold Service Welded Shoes With Wear Plate	
21.1	T-SH-110 COLD SERVICE WELDED SHOE FOR CS , SS & ALLOY LINES 2" - 10" , 300mm LONG	21.4 T-SH-113 COLD SERVICE WELDED SHOE FOR CS , SS & ALLOY LINES 12" - 36" , 300mm LONG
21.2	T-SH-111 COLD SERVICE WELDED SHOE FOR CS , SS & ALLOY LINES 2" - 10" , 400mm LONG	21.5 T-SH-114 COLD SERVICE WELDED SHOE FOR CS , SS & ALLOY LINES 12" - 36" , 400mm LONG
21.3	T-SH-112 COLD SERVICE WELDED SHOE FOR CS , SS & ALLOY LINES 2" - 10" , 500mm LONG	21.6 T-SH-115 COLD SERVICE WELDED SHOE FOR CS , SS & ALLOY LINES 12" - 36" , 500mm LONG

21	Cold Service Welded Shoes With Wear Plate	
21.7	<p>T-SH-116 COLD SERVICE WELDED SHOE FOR CS , SS & ALLOY LINES 2" - 10" , 300mm LONG</p> 	<p>21.10 T-SH-119 COLD SERVICE WELDED SHOE FOR CS , SS & ALLOY LINES 12" - 36" , 300mm LONG</p> 
21.8	<p>T-SH-117 COLD SERVICE WELDED SHOE FOR CS , SS & ALLOY LINES 2" - 10" , 300mm LONG</p> 	<p>21.11 T-SH-120 COLD SERVICE WELDED SHOE FOR CS , SS & ALLOY LINES 12" - 36" , 400mm LONG</p> 
21.9	<p>T-SH-118 COLD SERVICE WELDED SHOE FOR CS , SS & ALLOY LINES 2" - 10" , 500mm LONG</p> 	<p>21.12 T-SH-121 COLD SERVICE WELDED SHOE FOR CS , SS & ALLOY LINES 12" - 36" , 500mm LONG</p> 

21	Cold Service Welded Shoes With Wear Plate	
21.13	<p>T-SH-825 SPECIAL COLD SERVICE 3 GUSSET WELDED SHOE FOR CS , SS & ALLOY LINES 2" - 10"</p> 	<p>21.16 T-SH-934 SPECIAL COLD SERVICE WELDED SHOE FOR CS , SS & ALLOY LINES 12" - 36"</p> 
21.14	<p>T-SH-826 SPECIAL COLD SERVICE 3 GUSSET WELDED SHOE FOR CS , SS & ALLOY LINES 12" - 36"</p> 	<p>21.17 T-SH-935 SPECIAL COLD SERVICE WELDED SHOE FOR CS , SS & ALLOY LINES 2" - 10"</p> 
21.15	<p>T-SH-933 SPECIAL COLD SERVICE WELDED SHOE FOR CS , SS & ALLOY LINES 2" - 10"</p> 	<p>21.18 T-SH-936 SPECIAL COLD SERVICE WELDED SHOE FOR CS , SS & ALLOY LINES 12" - 36"</p> 

21.1 COLD SERVICE WELDED SHOE FOR CS , SS & ALLOY LINES
50- 250mm / 2" - 10" , 100mm HIGH - 300mm LONG
SH - 110


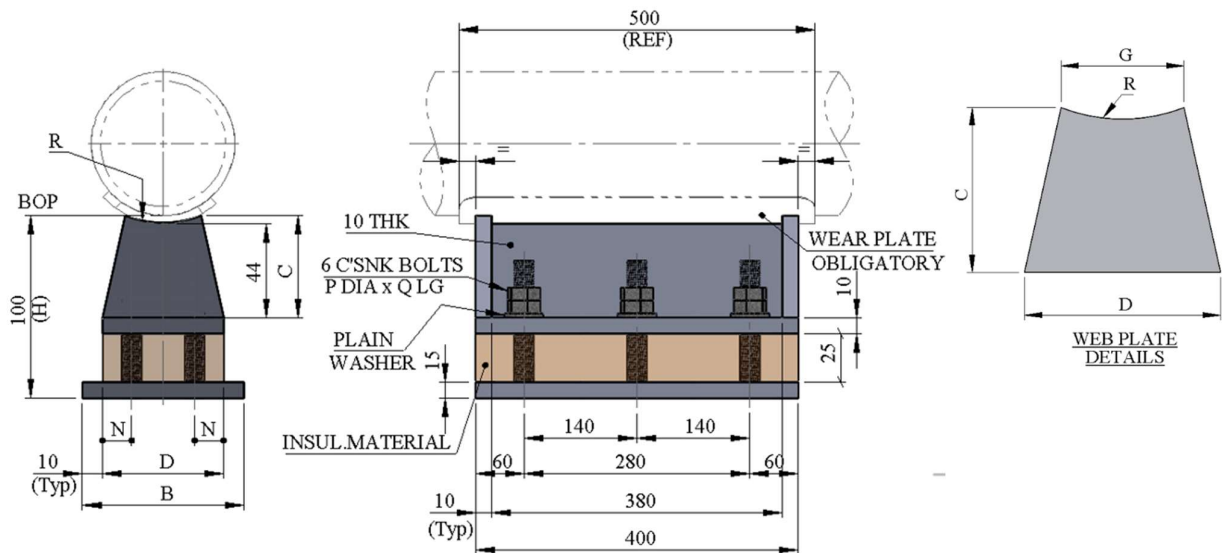
TYPICAL PART NUMBER	AVAILABLE MATERIAL SHORT CODE	STD DETAIL TEMPERATURE LIMITATION	
		MAX. DESIGN TEMP	MIN. DESIGN TEMP
T-SH-110-(DN)-SS/CS (CS BOTTOM PLATE)	SS / CS	160 °C	(-) 196 °C
T-SH-110-(DN)-SS	SS	160 °C	(-) 196 °C

TYPE	LINE SIZE			SHOE DIMENSIONS								SAFE WORKING LOAD (kN) (MAX) (BLOCK)			WEIGHTS (in kg)
	DN (mm)	NPS in (inch)	NPS in (mm)	B	C	D	G	N	P	Q	R	COMPR ESSIVE	LIFT ING	LATERA L	kg
T-SH-110-0050	DN 50	2"	60.3	120	50	100	40	20	16	75	36	150	65	45	10.38
T-SH-110-0080	DN 80	3"	88.9	120	63	100	80	20	16	75	51	150	65	45	10.58
T-SH-110-0100	DN 100	4"	114.3	120	69	100	100	20	16	75	63	150	65	45	10.68
T-SH-110-0125	DN 125	5"	141.3	120	61	100	100	20	16	75	76	150	65	45	10.62
T-SH-110-0150	DN 150	6"	168.3	120	59	100	100	20	16	75	90	150	65	45	10.63
T-SH-110-0200	DN 200	8"	219.1	120	55	100	100	20	16	75	116	150	65	45	10.61
T-SH-110-0250	DN 250	10"	273.0	170	65	150	150	25	20	80	143	225	100	70	14.97

This shoe is to be used in conjunction with a wearplate.
 Shoe construction / insulation material shall be subject to project approval.
 All welds to be a= 0.7 x WT , but max 4mm CFW.
 Blocks must be supported over at least 25% of base.
 This shoe to be used for lines with an anchor , line stop or high guide load restraints.
 Bolts to be according to ISO 10642 SS A4 80 (Full Threaded), & Nuts SS A4 80
 STD type includes all bolts , plain washers and double nuts. bolts to have a minimum over length of 3 threads.

21.2 COLD SERVICE WELDED SHOE FOR CS, SS & ALLOY LINES
50- 250mm / 2" - 10" , 100mm HIGH - 400mm LONG

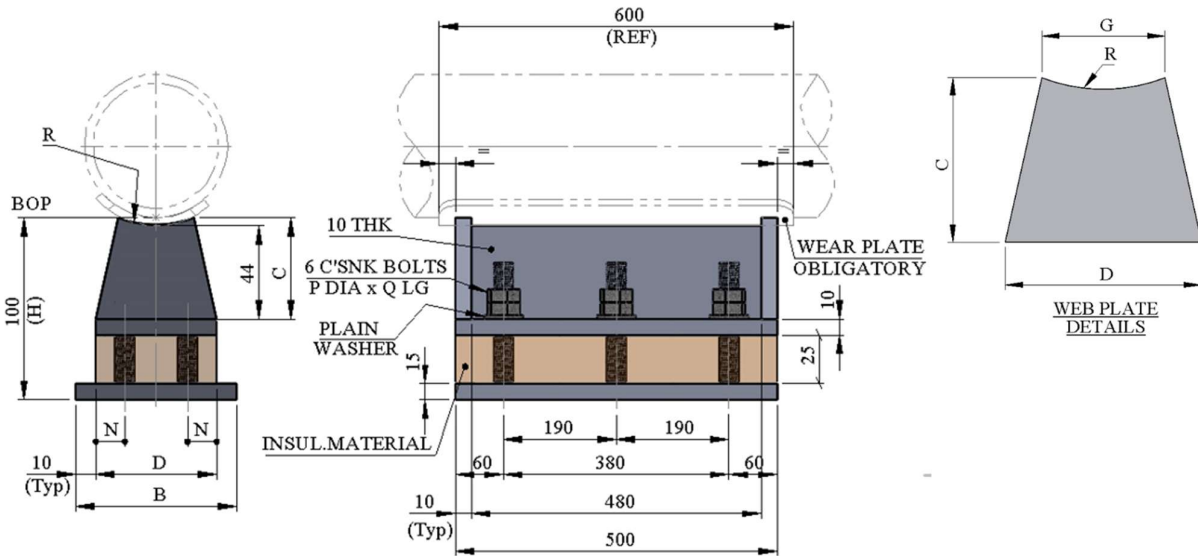
SH - 111



TYPICAL PART NUMBER	AVAILABLE MATERIAL SHORT CODE	STD DETAIL TEMPERATURE LIMITATION	
		MAX. DESIGN TEMP	MIN. DESIGN TEMP
T-SH-111-(DN)-SS/CS (CS BOTTOM PLATE)	SS / CS	160 °C	(-) 196 °C
T-SH-111-(DN)-SS	SS	160 °C	(-) 196 °C

TYPE	LINE SIZE			SHOE DIMENSIONS								SAFE WORKING LOAD (kN) (MAX) (BLOCK)			WEIGHTS (in kg)
	DN (mm)	NPS in (inch)	NPS in (mm)	B	C	D	G	N	P	Q	R	COMPRESSIVE	LIFTING	LATERAL	kg
T-SH-111-0050	DN 50	2"	60.3	120	50	100	40	20	16	75	36	200	65	45	13.9
T-SH-111-0080	DN 80	3"	88.9	120	63	100	80	20	16	75	51	200	65	45	14.1
T-SH-111-0100	DN 100	4"	114.3	120	69	100	100	20	16	75	63	200	65	45	14.2
T-SH-111-0125	DN 125	5"	141.3	120	61	100	100	20	16	75	76	200	65	45	14.1
T-SH-111-0150	DN 150	6"	168.3	120	59	100	100	20	16	75	90	200	65	45	14.1
T-SH-111-0200	DN 200	8"	219.1	120	55	100	100	20	16	75	116	200	65	45	14.1
T-SH-111-0250	DN 250	10"	273.0	170	65	150	150	25	20	80	143	300	100	70	19.8

This shoe is to be used in conjunction with a wearplate.
 Shoe construction / insulation material shall be subject to project approval.
 All welds to be $a = 0.7 \times WT$, but max 4mm CFW.
 Blocks must be supported over at least 25% of base.
 This shoe to be used for lines with an anchor, line stop or high guide load restraints.
 Bolts to be according to ISO 10642 SS A4 80 (Full Threaded), & Nuts SS A4 80
 STD type includes all bolts, Plain washers and double nuts. bolts to have a minimum over length of 3 threads.

21.3 COLD SERVICE WELDED SHOE FOR CS , SS & ALLOY LINES
50- 250mm / 2" - 10" , 100mm HIGH - 500mm LONG
SH - 112


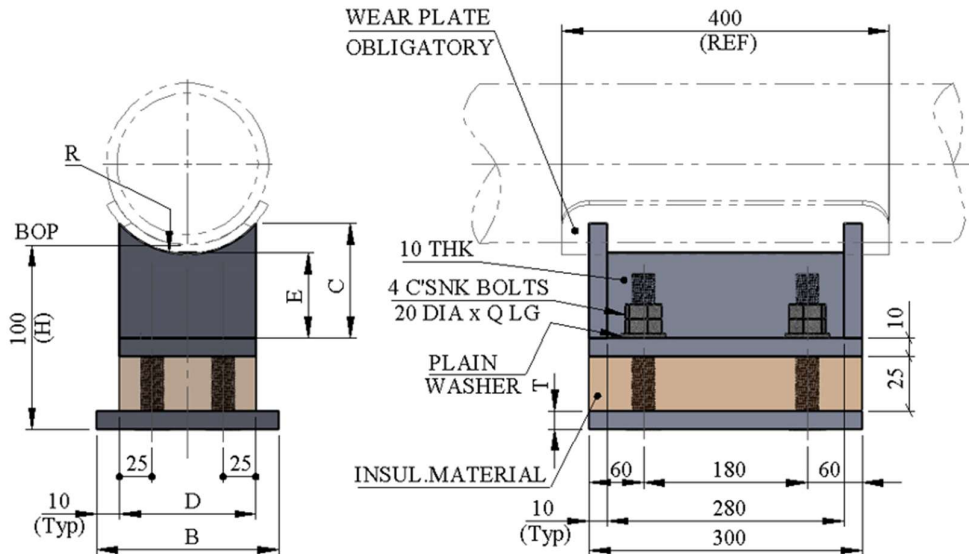
TYPICAL PART NUMBER	AVAILABLE MATERIAL SHORT CODE	STD DETAIL TEMPERATURE LIMITATION	
		MAX. DESIGN TEMP	MIN. DESIGN TEMP
T-SH-112-(DN)-SS/CS (CS BOTTOM PLATE)	SS / CS	160 °C	(-) 196 °C
T-SH-112-(DN)-SS	SS	160 °C	(-) 196 °C

TYPE	LINE SIZE			SHOE DIMENSIONS								SAFE WORKING LOAD (kN) (MAX) (BLOCK)			WEIGHS (in kg)
	DN (mm)	NPS in (inch)	NPS in (mm)	B	C	D	G	N	P	Q	R	COMPRESSIVE	LIFTING	LATERAL	kg
T-SH-112-0050	DN 50	2"	60.3	120	50	100	40	20	16	75	36	250	100	68	16.9
T-SH-112-0080	DN 80	3"	88.9	120	63	100	80	20	16	75	51	250	100	68	17.1
T-SH-112-0100	DN 100	4"	114.3	120	69	100	100	20	16	75	63	250	100	68	17.2
T-SH-112-0125	DN 125	5"	141.3	120	61	100	100	20	16	75	76	250	100	68	17.1
T-SH-112-0150	DN 150	6"	168.3	120	59	100	100	20	16	75	90	250	100	68	17.2
T-SH-112-0200	DN 200	8"	219.1	120	55	100	100	20	16	75	116	250	100	68	17.1
T-SH-112-0250	DN 250	10"	273.0	170	65	150	150	25	20	80	143	375	150	105	24.1

This shoe is to be used in conjunction with a wearplate.
 Shoe construction / insulation material shall be subject to project approval.
 All welds to be a= 0.7 x WT , but max 4mm CFW.
 Blocks must be supported over at least 25% of base.
 This shoe to be used for lines with an anchor , line stop or high guide load restraints.
 Bolts to be according to ISO 10642 SS A4 80 (Full Threaded), & Nuts SS A4 80
 STD type includes all bolts , plain washers and double nuts. bolts to have a minimum over length of 3 threads.

21.4 COLD SERVICE WELDED SHOE FOR CS , SS & ALLOY LINES
300- 900mm / 12” - 36” , 100mm HIGH - 300mm LONG

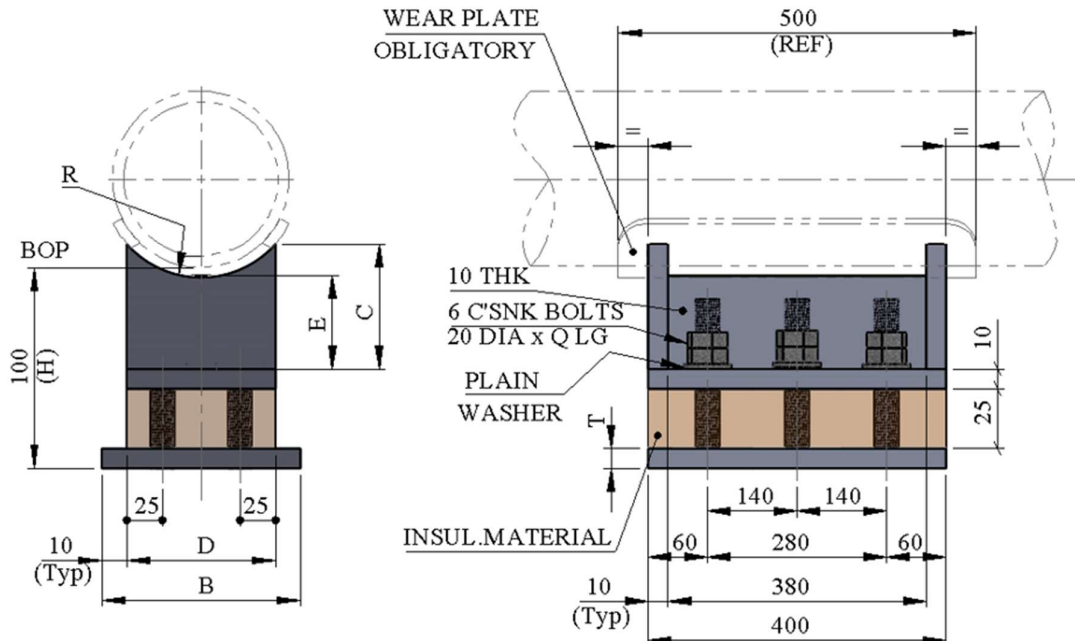
SH -113



TYPICAL PART NUMBER	AVAILABLE MATERIAL SHORT CODE	STD DETAIL TEMPERATURE LIMITATION	
		MAX. DESIGN TEMP	MIN. DESIGN TEMP
T-SH-113-(DN)-SS/CS (CS BOTTOM PLATE)	SS / CS	160 °C	(-) 196 °C
T-SH-113-(DN)-SS	SS	160 °C	(-) 196 °C

TYPE	LINE SIZE			SHOE DIMENSIONS							SAFE WORKING LOAD (kN) (MAX) (BLOCK)			WEIGHTS (in kg)
	DN (mm)	NPS in (inch)	NPS in (mm)	B	C	D	E	Q	R	T	COMPRESSIVE	LIFTING	LATERAL	kg
T-SH-113-0300	DN 300	12"	323.8	170	62	150	44	80	168	15	225	100	70	14.95
T-SH-113-0350	DN 350	14"	355.6	220	74	200	44	80	184	15	300	100	70	19.17
T-SH-113-0400	DN 400	16"	406.4	220	69	200	44	80	210	15	300	100	70	19.11
T-SH-113-0450	DN 450	18"	457.2	270	66	250	44	80	235	15	375	100	70	22.80
T-SH-113-0500	DN 500	20"	508.0	270	71	250	39	85	260	20	375	100	70	26.24
T-SH-113-0600	DN 600	24"	609.6	270	65	250	39	85	311	20	375	100	70	26.16
T-SH-113-0750	DN 750	30"	762.0	370	81	350	39	85	387	20	525	100	70	35.81
T-SH-113-0900	DN 900	36"	914.4	420	84	400	39	85	463	20	600	100	70	40.57

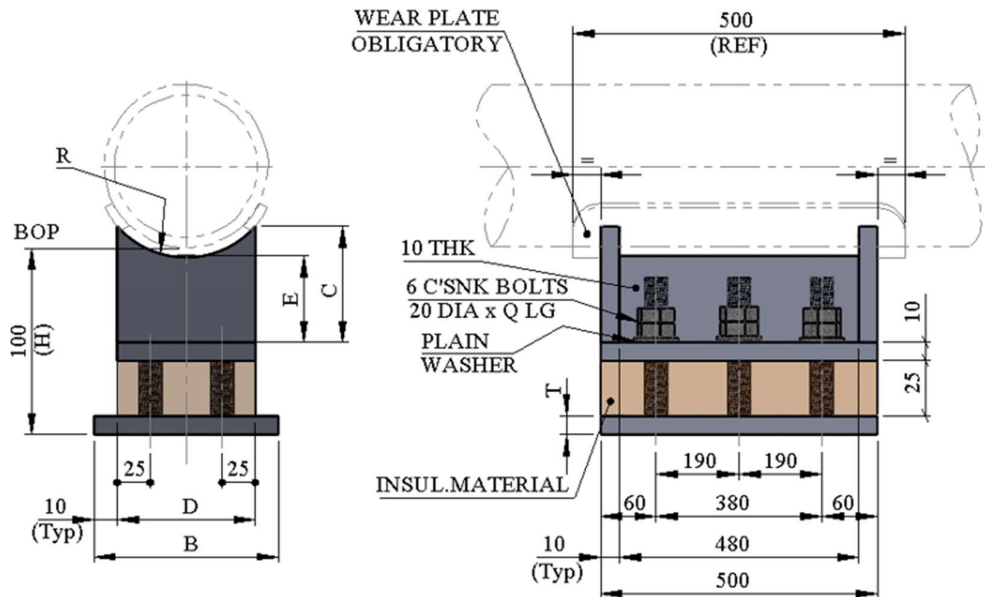
This shoe is to be used in conjunction with a wearplate.
 Shoe construction / insulation material shall be subject to project approval.
 All welds to be a= 0.7 x WT , but max 4mm CFW.
 Blocks must be supported over at least 25% of base.
 This shoe to be used for lines with an anchor , Line stop or high guide load restraints.
 Bolts to be according to ISO 10642 SS A4 80 (Full Threaded), & Nuts SS A4 80
 STD type includes all bolts , plain washers and double nuts. bolts to have a minimum over length of 3 threads.

21.5 COLD SERVICE WELDED SHOE FOR CS , SS & ALLOY LINES
300- 900mm / 12" - 36", 100mm HIGH - 400mm LONG
SH - 114


TYPICAL PART NUMBER	AVAILABLE MATERIAL SHORT CODE	STD DETAIL TEMPERATURE LIMITATION	
		MAX. DESIGN TEMP	MIN. DESIGN TEMP
T-SH-114-(DN)-SS/CS (CS BOTTOM PLATE)	SS / CS	160 °C	(-) 196 °C
T-SH-114-(DN)-SS	SS	160 °C	(-) 196 °C

TYPE	LINE SIZE			SHOE DIMENSIONS							SAFE WORKING LOAD (kN) (MAX) (BLOCK)			WEIGHTS (in kg)
	DN (mm)	NPS in (inch)	NPS in (mm)	B	C	D	E	Q	R	T	COMPRESSIVE	LIFTING	LATERAL	kg
T-SH-114-0300	DN 300	12"	323.8	170	62	150	44	80	168	15	300	150	105	19.8
T-SH-114-0350	DN 350	14"	355.6	220	74	200	44	80	184	15	400	150	105	25.2
T-SH-114-0400	DN 400	16"	406.4	220	69	200	44	80	210	15	400	150	105	25.2
T-SH-114-0450	DN 450	18"	457.2	270	66	250	44	80	235	15	500	150	105	30.1
T-SH-114-0500	DN 500	20"	508.0	270	71	250	39	85	260	20	500	150	105	34.6
T-SH-114-0600	DN 600	24"	609.6	270	65	250	39	85	311	20	500	150	105	34.5
T-SH-114-0750	DN 750	30"	762.0	370	81	350	39	85	387	20	700	150	105	47.0
T-SH-114-0900	DN 900	36"	914.4	420	84	400	39	85	463	20	800	150	105	53.2

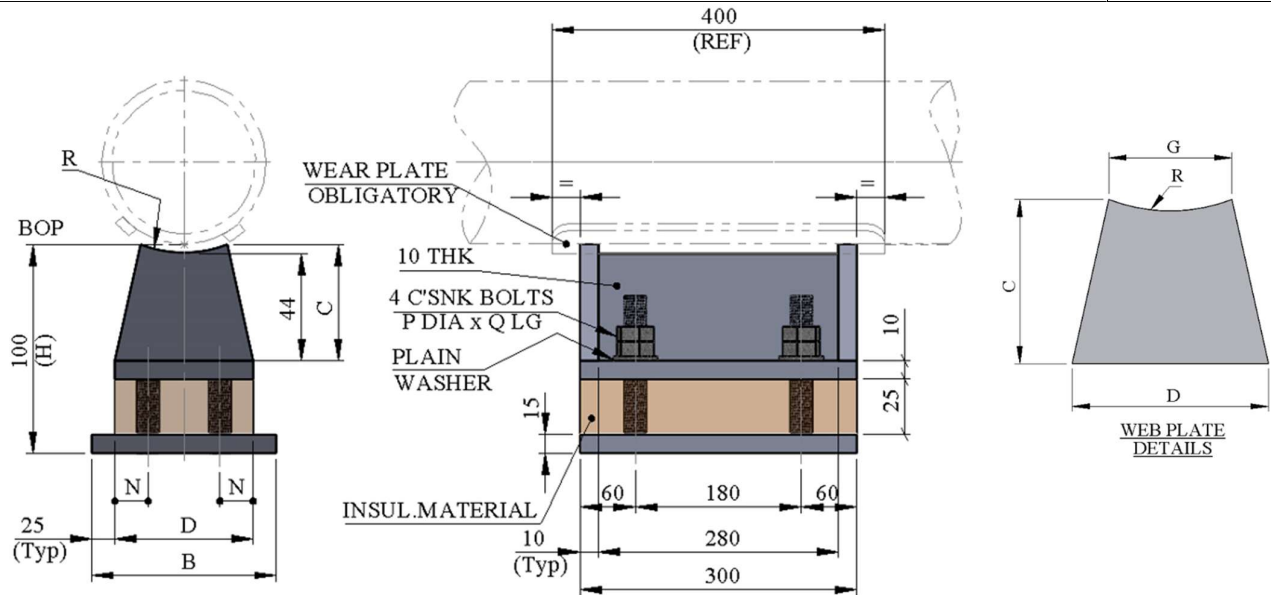
This shoe is to be used in conjunction with a wear plate.
 Shoe construction / insulation material shall be subject to project approval.
 All welds to be a= 0.7 x WT , but max 4mm CFW.
 Blocks must be supported over at least 25% of base.
 This shoe to be used for lines with an anchor , line stop or high guide load restraints.
 Bolts to be according to ISO 10642 SS A4 80 (Full Threaded), & Nuts SS A4 80
 STD type includes all bolts ,plain washers and double nuts. bolts to have a minimum overlength of 3 threads.

21.6 COLD SERVICE WELDED SHOE FOR CS , SS & ALLOY LINES
300- 900mm / 12" - 36" , 100mm HIGH - 500mm LONG
SH - 115


TYPICAL PART NUMBER	AVAILABLE MATERIAL SHORT CODE	STD DETAIL TEMPERATURE LIMITATION	
		MAX. DESIGN TEMP	MIN. DESIGN TEMP
T-SH-115-(DN)-SS/CS (CS BOTTOM PLATE)	SS / CS	160 °C	(-) 196 °C
T-SH-115-(DN)-SS	SS	160 °C	(-) 196 °C

TYPE	LINE SIZE			SHOE DIMENSIONS							SAFE WORKING LOAD (kN) (MAX) (BLOCK)			WEIGHTS (in kg)
	DN (mm)	NPS in (inch)	NPS in (mm)	B	C	D	E	Q	R	T	COMPRESSIVE	LIFTING	LATERAL	kg
T-SH-115-0300	DN 300	12"	323.8	170	62	150	44	80	168	15	375	150	105	24.1
T-SH-115-0350	DN 350	14"	355.6	220	74	200	44	80	184	15	500	150	105	30.8
T-SH-115-0400	DN 400	16"	406.4	220	69	200	44	80	210	15	500	150	105	30.7
T-SH-115-0450	DN 450	18"	457.2	270	66	250	44	80	235	15	625	150	105	36.8
T-SH-115-0500	DN 500	20"	508.0	270	71	250	39	85	260	20	625	150	105	42.4
T-SH-115-0600	DN 600	24"	609.6	270	65	250	39	85	311	20	625	150	105	42.3
T-SH-115-0750	DN 750	30"	762.0	370	81	350	39	85	387	20	875	150	105	57.7
T-SH-115-0900	DN 900	36"	914.4	420	84	400	39	85	463	20	1000	150	105	65.3

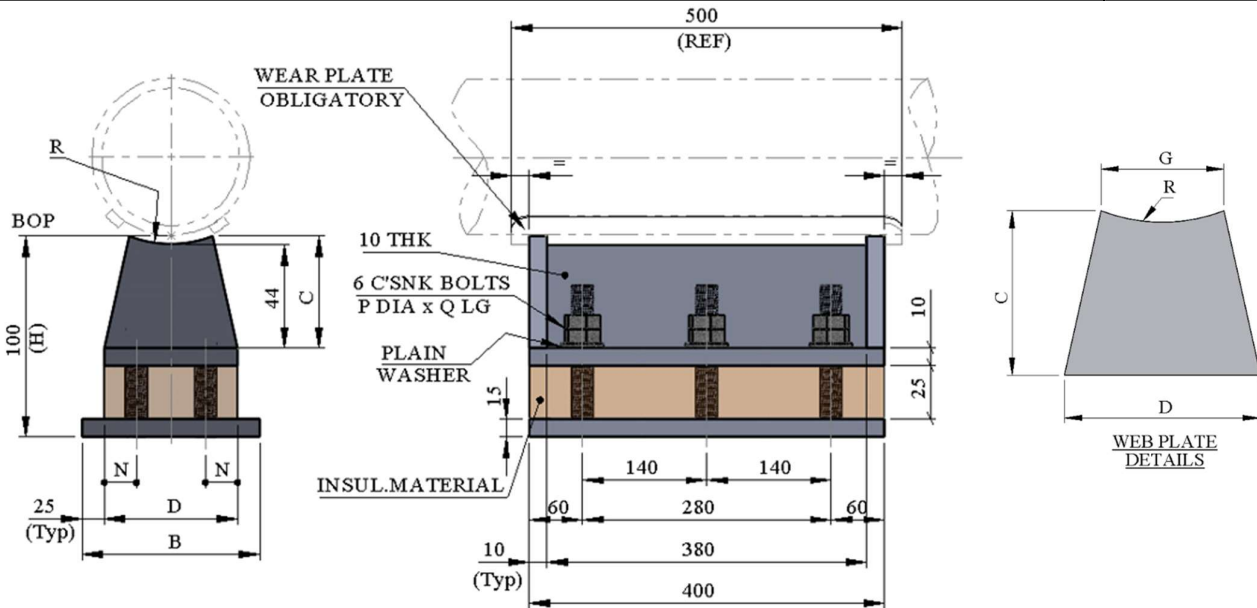
This shoe is to be used in conjunction with a wearplate.
 Shoe construction / insulation material shall be subject to project approval.
 All welds to be a= 0.7 x WT , but max 4mm CFW.
 Blocks must be supported over at least 25% of base.
 This shoe to be used for lines with an anchor , line stop or high guide load restraints.
 Bolts to be according to ISO 10642 SS A4 80 (Full Threaded), & Nuts SS A4 80
 STD type includes all bolts , plain washers and double nuts. bolts to have a minimum over length of 3 threads.

21.7 COLD SERVICE WELDED SHOE FOR CS, SS & ALLOY LINES
50- 250mm / 2" - 10" , 100mm HIGH - 300mm LONG
SH - 116


TYPICAL PART NUMBER	AVAILABLE MATERIAL SHORT CODE	STD DETAIL TEMPERATURE LIMITATION	
		MAX. DESIGN TEMP	MIN. DESIGN TEMP
T-SH-116-(DN)-SS/CS (CS BOTTOM PLATE)	SS / CS	160 °C	(-) 196 °C
T-SH-116-(DN)-SS	SS	160 °C	(-) 196 °C

TYPE	LINE SIZE			SHOE DIMENSIONS								SAFE WORKING LOAD (kN) (MAX) (BLOCK)			WEIGHTS (in kg)
	DN (mm)	NPS in (inc h)	NPS in (mm)	B	C	D	G	N	P	Q	R	COMPRESSIVE	LIFTING	LATERAL	kg
T-SH-116-0050	DN 50	2"	60.3	150	50	100	40	20	16	90	36	150	65	40	11.5
T-SH-116-0080	DN 80	3"	88.9	150	64	100	80	20	16	90	50	150	65	40	11.7
T-SH-116-0100	DN 100	4"	114.3	150	69	100	100	20	16	90	63	150	65	40	11.8
T-SH-116-0125	DN 125	5"	141.3	150	63	100	100	20	16	90	77	150	65	40	11.7
T-SH-116-0150	DN 150	6"	168.3	150	59	100	100	20	16	90	90	150	65	40	11.7
T-SH-116-0200	DN 200	8"	219.1	150	56	100	100	20	16	90	116	150	65	40	11.7
T-SH-116-0250	DN 250	10"	273.0	200	65	150	150	25	20	100	143	225	100	63	16.0

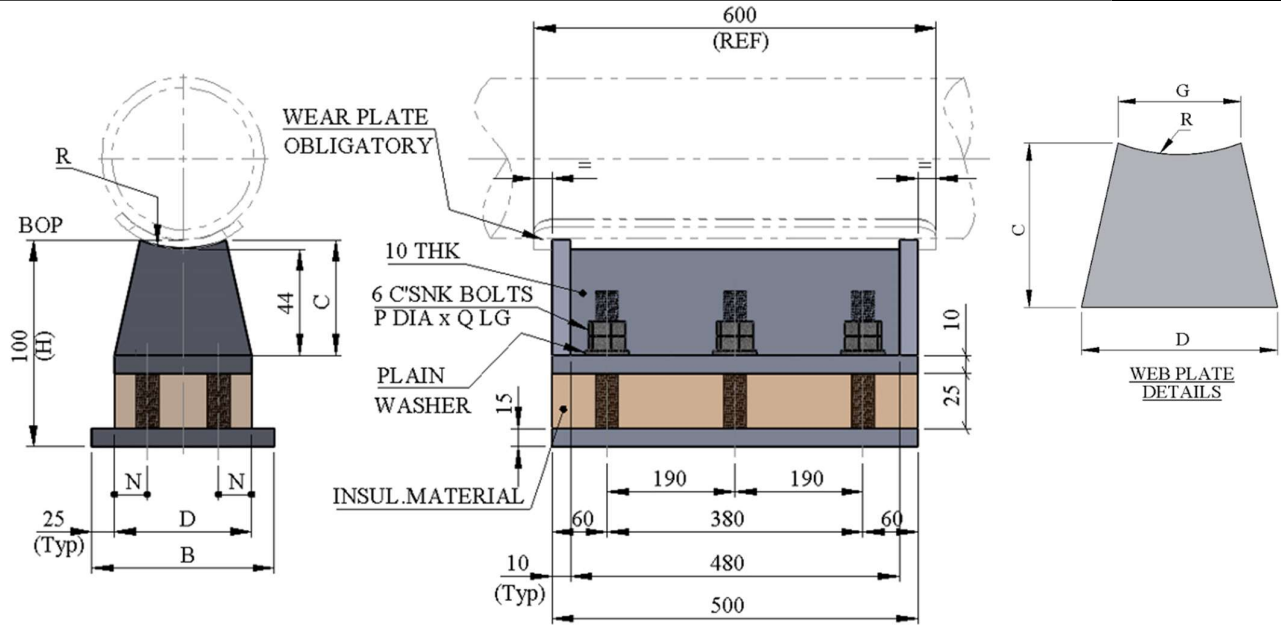
This shoe is to be used in conjunction with a wear plate.
 Shoe construction / insulation material shall be subject to project approval.
 All welds to be a= 0.7 x WT , but max 4mm CFW.
 Blocks must be supported over at least 25% of base.
 This shoe to be used for lines with an anchor , line stop or high guide load restraints.
 Bolts to be according to ISO 10642 SS A4 80 (Full Threaded), & Nuts SS A4 80
 STD type includes all bolts , plain washers and double nuts. bolts to have a minimum over length of 3 threads.

21.8 COLD SERVICE WELDED SHOE FOR CS , SS & ALLOY LINES
50- 250mm / 2" - 10" , 100mm HIGH - 400mm LONG
SH - 117


TYPICAL PART NUMBER	AVAILABLE MATERIAL SHORT CODE	STD DETAIL TEMPERATURE LIMITATION	
		MAX. DESIGN TEMP	MIN. DESIGN TEMP
T-SH-117-(DN)-SS/CS (CS BOTTOM PLATE)	SS / CS	160 °C	(-) 196 °C
T-SH-117-(DN)-SS	SS	160 °C	(-) 196 °C

TYPE	LINE SIZE			SHOE DIMENSIONS								SAFE WORKING LOAD (kN) (MAX) (BLOCK)			WEIGHTS (in kg)
	DN (mm)	NPS in (inch)	NPS in (mm)	B	C	D	G	N	P	Q	R	COMPRESSIVE	LIFTING	LATERAL	kg
T-SH-117-0050	DN 50	2"	60.3	150	50	100	40	20	16	90	36	200	65	40	15.3
T-SH-117-0080	DN 80	3"	88.9	150	64	100	80	20	16	90	50	200	65	40	15.5
T-SH-117-0100	DN 100	4"	114.3	150	69	100	100	20	16	90	63	200	65	40	15.6
T-SH-117-0125	DN 125	5"	141.3	150	63	100	100	20	16	90	77	200	65	40	15.6
T-SH-117-0150	DN 150	6"	168.3	150	59	100	100	20	16	90	90	200	65	40	15.5
T-SH-117-0200	DN 200	8"	219.1	150	56	100	100	20	16	90	116	200	65	40	15.5
T-SH-117-0250	DN 250	10"	273.0	200	65	150	150	25	20	100	143	300	100	63	21.2

This shoe is to be used in conjunction with a wear plate.
 Shoe construction / insulation material shall be subject to project approval.
 All welds to be a = 0.7 x WT , but max 4mm CFW
 Blocks must be supported over at least 25% of base.
 This shoe to be used for lines with an anchor , line stop or high guide load restraints.
 Bolts to be according to ISO 10642 SS A4 80 (Full Threaded), & Nuts SS A4 80
 STD type includes all bolts , plain washers and double nuts. bolts to have a minimum over length of 3 threads.

21.9 COLD SERVICE WELDED SHOE FOR CS, SS & ALLOY LINES
50- 250mm / 2" - 10" , 100mm HIGH - 500mm LONG
SH - 118


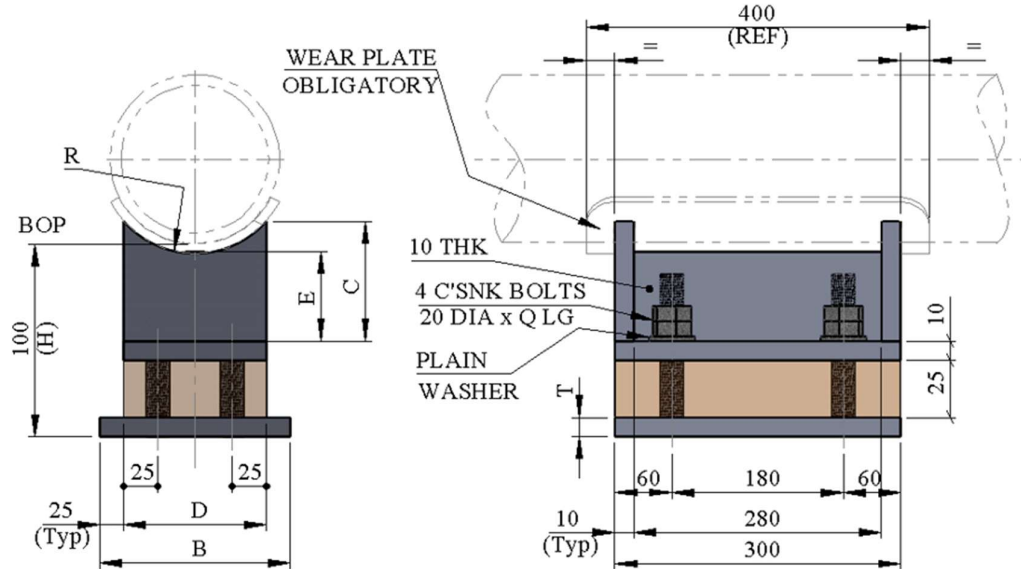
TYPICAL PART NUMBER	AVAILABLE MATERIAL SHORT CODE	STD DETAIL TEMPERATURE LIMITATION	
		MAX. DESIGN TEMP	MIN. DESIGN TEMP
T-SH-118-(DN)-SS/CS (CS BOTTOM PLATE)	SS / CS	160 °C	(-) 196 °C
T-SH-118-(DN)-SS	SS	160 °C	(-) 196 °C

TYPE	LINE SIZE			SHOE DIMENSIONS								SAFE WORKING LOAD (kN) (MAX) (BLOCK)			WEIGHTS (in kg)
	DN (mm)	NP S in (inc h)	NPS in (mm)	B	C	D	G	N	P	Q	R	COMPRESSIVE	LIFTING	LATERAL	kg
T-SH-118-0050	DN 50	2"	60.3	150	50	100	40	20	16	90	36	250	100	61	18.7
T-SH-118-0080	DN 80	3"	88.9	150	64	100	80	20	16	90	50	250	100	61	18.9
T-SH-118-0100	DN 100	4"	114.3	150	69	100	100	20	16	90	63	250	100	61	19.0
T-SH-118-0125	DN 125	5"	141.3	150	63	100	100	20	16	90	77	250	100	61	19.0
T-SH-118-0150	DN 150	6"	168.3	150	59	100	100	20	16	90	90	250	100	61	19.0
T-SH-118-0200	DN 200	8"	219.1	150	56	100	100	20	16	90	116	250	100	61	19.0
T-SH-118-0250	DN 250	10"	273.0	200	65	150	150	25	20	100	143	375	150	95	25.9

This shoe is to be used in conjunction with a wear plate.
 Shoe construction / insulation material shall be subject to project approval.
 All welds to be $a = 0.7 \times WT$, but max 4mm CFW
 Blocks must be supported over at least 25% of base.
 This shoe to be used for lines with an anchor, line stop or high guide load restraints.
 Bolts to be according to ISO 10642 SS A4 80 (Full Threaded), & Nuts SS A4 80
 STD type includes all bolts, plain washers and double nuts. bolts to have a minimum overlength of 3 threads.

21.10 COLD SERVICE WELDED SHOE FOR CS , SS & ALLOY LINES
300- 900mm / 12" - 36" , 100mm HIGH - 300mm LONG

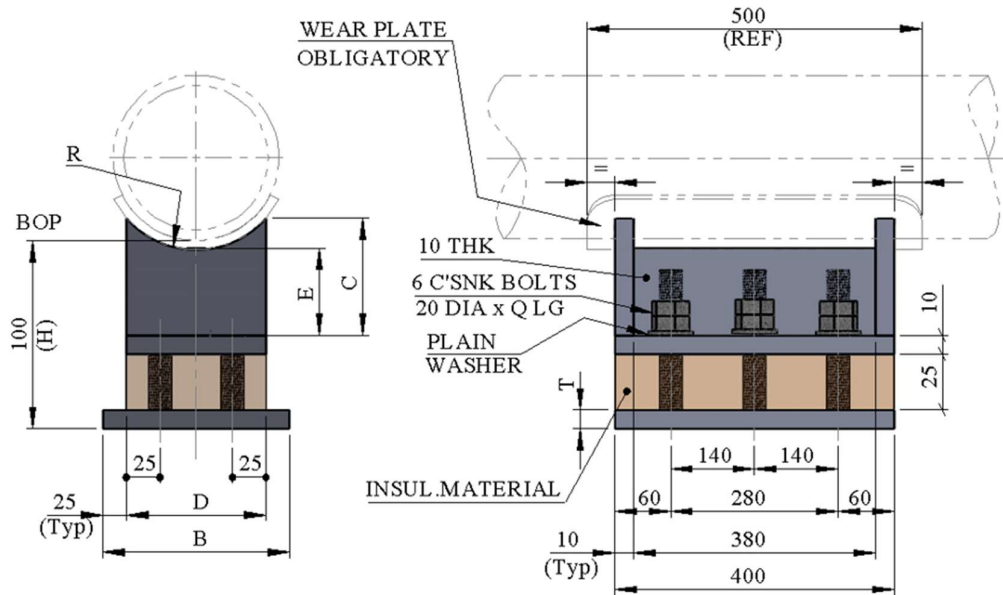
SH - 119



TYPICAL PART NUMBER	AVAILABLE MATERIAL SHORT CODE	STD DETAIL TEMPERATURE LIMITATION	
		MAX. DESIGN TEMP	MIN. DESIGN TEMP
T-SH-119-(DN)-SS/CS (CS BOTTOM PLATE)	SS / CS	160 °C	(-) 196 °C
T-SH-119-(DN)-SS	SS	160 °C	(-) 196 °C

TYPE	LINE SIZE			SHOE DIMENSIONS							SAFE WORKING LOAD (kN) (MAX) (BLOCK)			WEIGHTS (in kg)
	DN (mm)	NPS in (inch)	NPS in (mm)	B	C	D	E	Q	R	T	COMPRESSIVE	LIFTING	LATERAL	kg
T-SH-119-0300	DN 300	12"	323.8	200	62	150	44	100	168	15	225	100	63	16.0
T-SH-119-0350	DN 350	14"	355.6	250	73	200	44	100	184	15	300	100	63	20.2
T-SH-119-0400	DN 400	16"	406.4	250	69	200	44	100	209	15	300	100	63	20.2
T-SH-119-0450	DN 450	18"	457.2	250	66	200	44	100	235	15	375	100	63	20.2
T-SH-119-0500	DN 500	20"	508.0	300	71	250	39	105	260	20	375	100	63	27.7
T-SH-119-0600	DN 600	24"	609.6	300	65	250	39	105	311	20	375	100	63	27.6
T-SH-119-0700	DN 700	28"	711.2	400	84	350	39	105	362	20	525	100	63	37.3
T-SH-119-0750	DN 750	30"	762.0	400	81	350	39	105	387	20	525	100	63	37.3
T-SH-119-0800	DN 800	32"	812.8	450	91	400	39	105	412	20	600	100	63	42.2
T-SH-119-0900	DN 900	36"	914.4	450	84	400	39	105	463	20	600	100	63	42.0

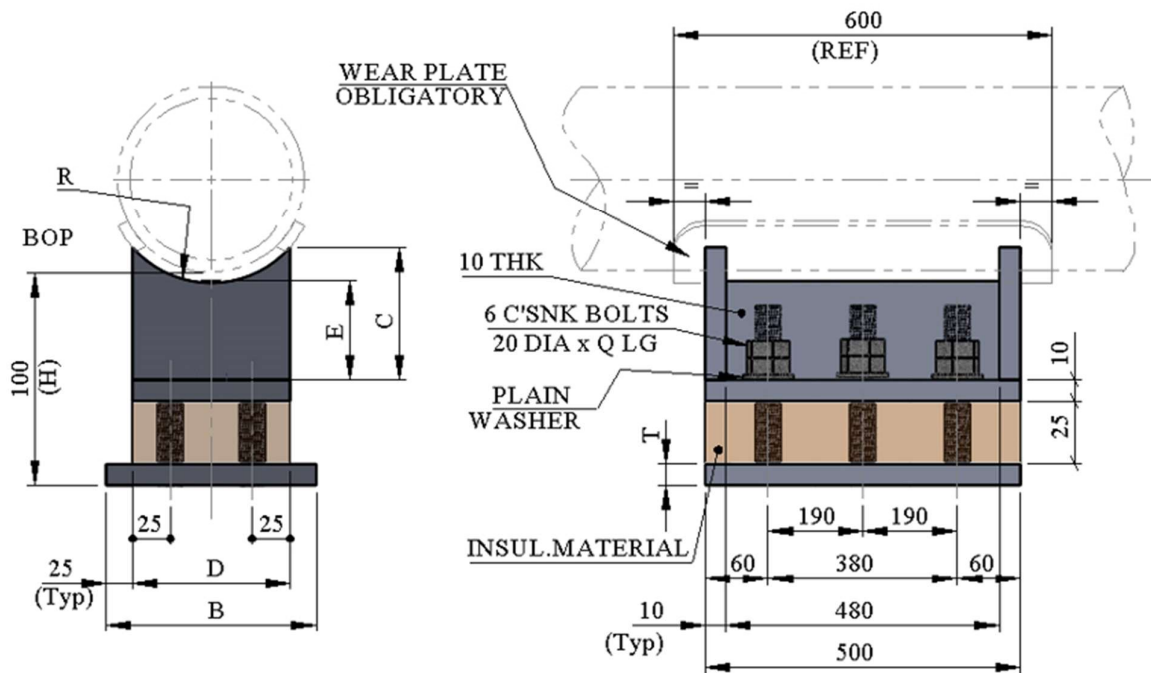
This shoe is to be used in conjunction with a wearplate.
 Shoe construction / insulation material shall be subject to project approval.
 All welds to be a= 0.7 x WT , but max 4mm CFW
 Blocks must be supported over at least 25% of base.
 This shoe to be used for lines with an anchor , line stop or high guide load restraints.
 Bolts to be according to ISO 10642 SS A4 80 (Full Threaded), & Nuts SS A4 80
 STD type includes all bolts , plain washers and double nuts. bolts to have a minimum over length of 3 threads.

21.11 COLD SERVICE WELDED SHOE FOR CS , SS & ALLOY LINES
300- 900mm / 12" - 36" , 100mm HIGH - 400mm LONG
SH - 120


TYPICAL PART NUMBER	AVAILABLE MATERIAL SHORT CODE	STD DETAIL TEMPERATURE LIMITATION	
		MAX. DESIGN TEMP	MIN. DESIGN TEMP
T-SH-120-(DN)-SS/CS (CS BOTTOM PLATE)	SS / CS	160 °C	(-) 196 °C
T-SH-120-(DN)-SS	SS	160 °C	(-) 196 °C

TYPE	LINE SIZE			SHOE DIMENSIONS							SAFE WORKING LOAD (kN) (MAX) (BLOCK)			WEIGHTS (in kg)
	DN (mm)	NPS in (inch)	NPS in (mm)	B	C	D	E	Q	R	T	COMPRESSIVE	LIFTING	LATERAL	kg
T-SH-120-0300	DN 300	12"	323.8	200	62	150	44	100	168	15	300	100	63	21.2
T-SH-120-0350	DN 350	14"	355.6	250	73	200	44	100	184	15	400	100	63	26.6
T-SH-120-0400	DN 400	16"	406.4	250	69	200	44	100	209	15	400	100	63	26.6
T-SH-120-0450	DN 450	18"	457.2	250	66	200	44	100	235	15	500	100	63	26.6
T-SH-120-0500	DN 500	20"	508.0	300	71	250	39	105	260	20	500	100	63	36.5
T-SH-120-0600	DN 600	24"	609.6	300	65	250	39	105	311	20	500	100	63	36.4
T-SH-120-0700	DN 700	28"	711.2	400	84	350	39	105	362	20	700	100	63	49.0
T-SH-120-0750	DN 750	30"	762.0	400	81	350	39	105	387	20	700	100	63	48.9
T-SH-120-0800	DN 800	32"	812.8	450	91	400	39	105	412	20	800	100	63	55.3
T-SH-120-0900	DN 900	36"	914.4	450	84	400	39	105	463	20	800	100	63	55.1

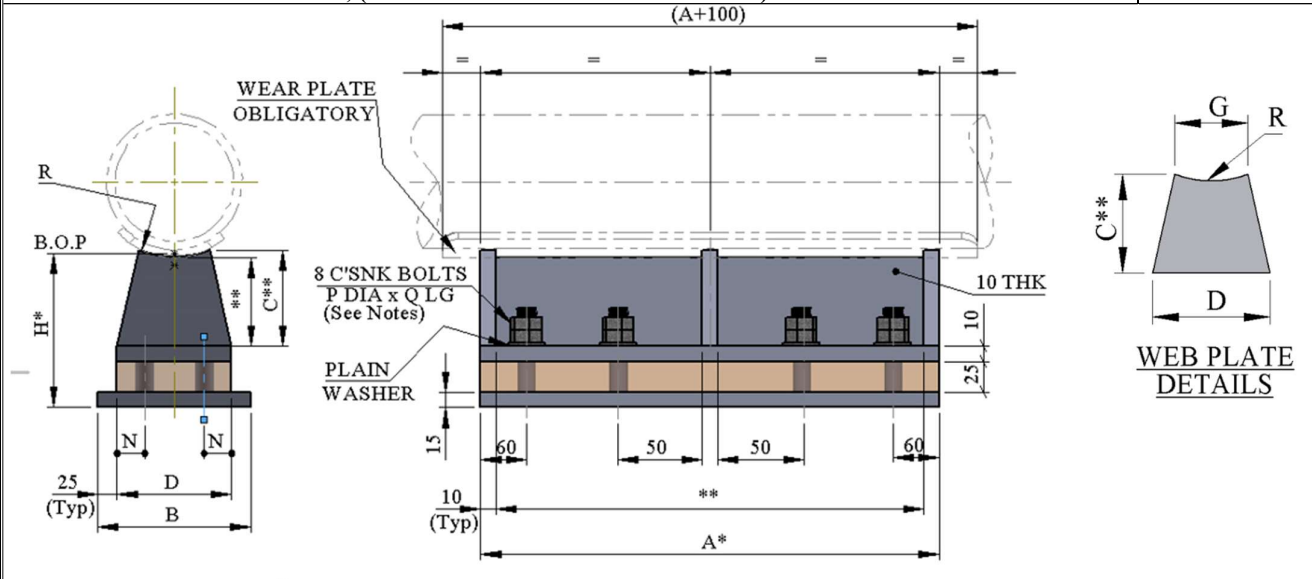
This shoe is to be used in conjunction with a wearplate.
 Shoe construction / insulation material shall be subject to project approval.
 All welds to be $a = 0.7 \times WT$, but max 4mm CFW.
 Blocks must be supported over at least 25% of base.
 This shoe to be used for lines with an anchor, line stop or high guide load restraints.
 Bolts to be according to ISO 10642 SS A4 80 (Full Threaded), & Nuts SS A4 80
 STD type includes all bolts, plain washers and double nuts. bolts to have a minimum over length of 3 threads.

21.12 COLD SERVICE WELDED SHOE FOR CS , SS & ALLOY LINES
300- 900mm / 12" - 36" , 100mm HIGH - 500mm LONG
SH - 121


TYPICAL PART NUMBER	AVAILABLE MATERIAL SHORT CODE	STD DETAIL TEMPERATURE LIMITATION	
		MAX. DESIGN TEMP	MIN. DESIGN TEMP
T-SH-121-(DN)-SS/CS (CS BOTTOM PLATE)	SS / CS	160 °C	(-) 196 °C
T-SH-121-(DN)-SS	SS	160 °C	(-) 196 °C

TYPE	LINE SIZE			SHOE DIMENSIONS							SAFE WORKING LOAD (kN) (MAX) (BLOCK)			WEIGHTS (in kg)
	DN (mm)	NPS in (inch)	NPS in (mm)	B	C	D	E	Q	R	T	COMPRESSIVE	LIFTING	LATERAL	kg
T-SH-121-0300	DN 300	12"	323.8	200	62	150	44	100	168	15	375	100	63	21.2
T-SH-121-0350	DN 350	14"	355.6	250	73	200	44	100	184	15	500	100	63	26.6
T-SH-121-0400	DN 400	16"	406.4	250	69	200	44	100	209	15	500	100	63	26.6
T-SH-121-0450	DN 450	18"	457.2	250	66	200	44	100	235	15	625	100	63	26.6
T-SH-121-0500	DN 500	20"	508.0	300	71	250	39	105	260	20	625	100	63	36.5
T-SH-121-0600	DN 600	24"	609.6	300	65	250	39	105	311	20	625	100	63	36.4
T-SH-121-0700	DN 700	28"	711.2	400	84	350	39	105	362	20	875	100	63	49.0
T-SH-121-0750	DN 750	30"	762.0	400	81	350	39	105	387	20	875	100	63	48.9
T-SH-121-0800	DN 800	32"	812.8	450	91	400	39	105	412	20	1000	100	63	55.3
T-SH-121-0900	DN 900	36"	914.4	450	84	400	39	105	463	20	1000	100	63	55.1

This shoe is to be used in conjunction with a wear plate.
 Shoe construction / insulation material shall be subject to project approval.
 All welds to be a= 0.7 x WT , but max 4mm CFW
 Blocks must be supported over at least 25% of base.
 This shoe to be used for lines with an anchor , line stop or high guide load restraints.
 Bolts to be according to ISO 10642 SS A4 80 (Full Threaded), & Nuts SS A4 80
 STD type includes all bolts , plain washers and double nuts. bolts to have a minimum over length of 3 threads.

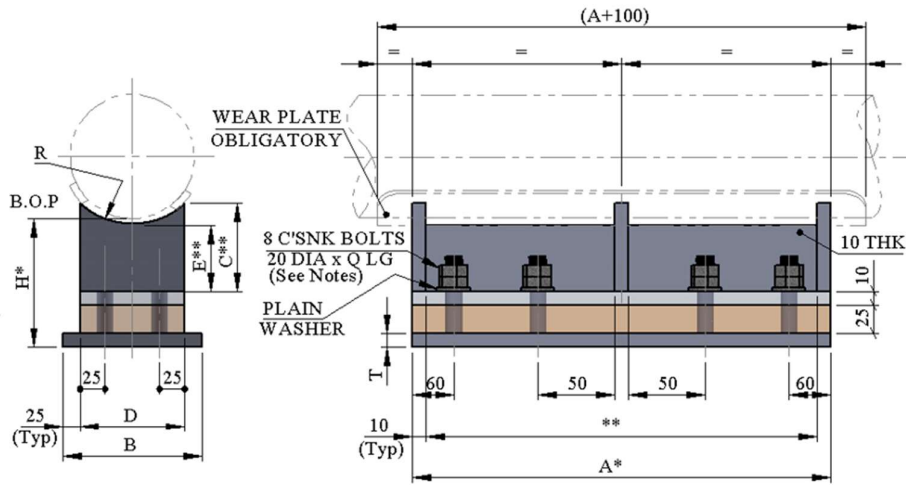
21.13 SPECIAL COLD SERVICE 3 GUSSET WELDED SHOE FOR CS , SS & ALLOY LINES
50- 250mm / 2" - 10" , (LENGTH & HEIGHT DEFINABLE)
SH - 825


TYPICAL PART NUMBER	AVAILABLE MATERIAL SHORT CODE	STD DETAIL TEMPERATURE LIMITATION	
		MAX. DESIGN TEMP	MIN. DESIGN TEMP
T-SH-825-(DN)-CS#A=(DIM)H=(DIM)	CS	160 °C	(-) 196 °C
T-SH-825-(DN)-SS/CS #A=(DIM)H=(DIM) (CS BOTTOM PL)	SS / CS	160 °C	(-) 196 °C
T-SH-825-(DN)-SS#A=(DIM)H=(DIM)	SS	160 °C	(-) 196 °C

TYPE	LINE SIZE			SHOE DIMENSIONS								MAX SAFE WORKING LOAD FOR BLOCK (kN)				WEIGHTS (in kg)	
												COMPRES SIVE	LIFTING (SEE NOTES)		LATERAL (SEE NOTES)		
	DN (m)	NP S in (inc h)	NPS in (mm)	B	C	D	G	N	P	Q	R		A=300 & 400	A=500	H=100	H=150	kg
T-SH-825-0050	DN 50	2"	60.3	150	* *	100	40	20	16	75	36	0,5 x DIM A	65	100	45	40	TBA
T-SH-825-0080	DN 80	3"	88.9	150	* *	100	80	20	16	75	50	0,5 x DIM A	65	100	45	40	TBA
T-SH-825-0100	DN 100	4"	114.3	150	* *	100	100	20	16	75	63	0,5 x DIM A	65	100	45	40	TBA
T-SH-825-0125	DN 125	5"	141.3	150	* *	100	100	20	16	75	77	0,5 x DIM A	65	100	45	40	TBA
T-SH-825-0150	DN 150	6"	168.3	150	* *	100	100	20	16	75	90	0,5 x DIM A	65	100	45	40	TBA
T-SH-825-0200	DN 200	8"	219.1	150	* *	100	100	20	16	75	116	0,5 x DIM A	65	100	45	40	TBA
T-SH-825-0250	DN 250	10"	273.0	200	* *	150	150	25	20	80	143	0,75 x DIM A	100	150	70	63	TBA

This shoe is to be used in conjunction with a wearplate.
 Shoe construction / insulation material shall be subject to project approval.
 All welds to be a= 0.7 x WT , but max 4mm CFW
 Blocks must be supported over at least 25% of base.
 This shoe to be used for lines with an anchor , line stop or high guide load restraints.
 Bolts to be according to ISO 10642 SS A4 80 (Full Threaded), & Nuts SS A4 80
 STD type includes all bolts , plain washers and double nuts. bolts to have a minimum over length of 3 threads.
 Bolting length (DIM Q) : Refer back to nearest standard shoe sizes
 Bolting Dia (DIM P) : Refer back to nearest standard shoe sizes
 Bolting No. off : if distance between bolts exceeds approx. 400mm , add another set of bolts.
 For standard shoe sizes see SH-116, SH-117 , SH-118 & SH-416 , SH-417 ,SH-418
 Only dimension marked * (Length & Height) can vary from standard shoe sizes.Dim A to be above 500mm.
 Other effected dimensions marked ** to be calculated.
 Extrapolate lateral and lifting loads for other Dim A and H sizes

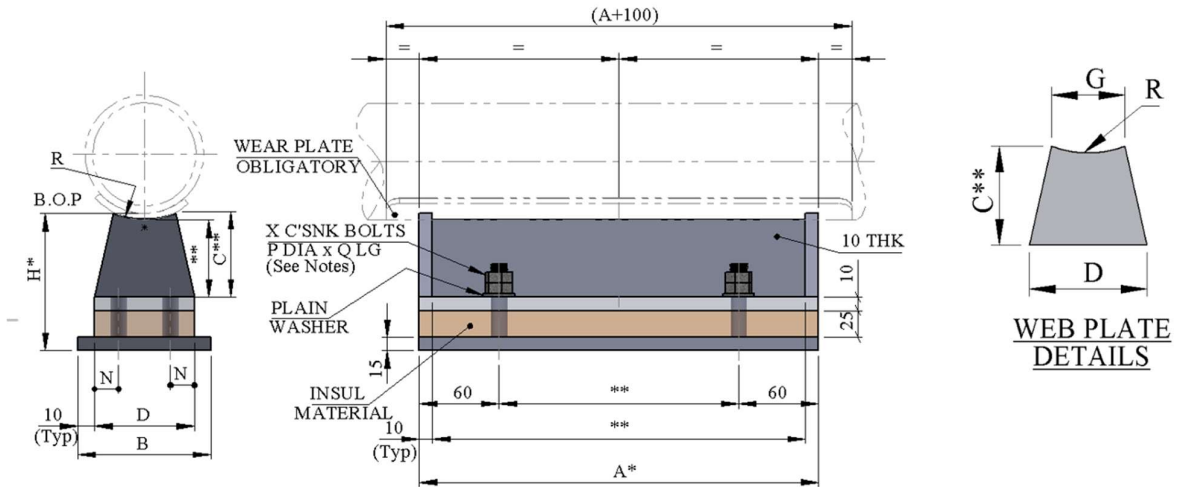
21.14 SPECIAL COLD SERVICE 3 GUSSET WELDED SHOE FOR CS , SS & ALLOY LINES SH - 826
300- 900mm / 12" - 36" , (LENGTH & HEIGHT DEFINABLE)



TYPICAL PART NUMBER	AVAILABLE MATERIAL SHORT CODE	STD DETAIL TEMPERATURE LIMITATION	
		MAX. DESIGN TEMP	MIN. DESIGN TEMP
T-SH-826-(DN)-CS#A=(DIM)H=(DIM)	CS	160 °C	(-) 196 °C
T-SH-826-(DN)-SS/CS #A=(DIM)H=(DIM) (CS BOTTOM PL)	SS/CS	160 °C	(-) 196 °C
T-SH-826-(DN)-SS#A=(DIM)H=(DIM)	SS	160 °C	(-) 196 °C

TYPE	LINE SIZE			SHOE DIMENSIONS							MAX SAFE WORKING LOAD FOR BLOCK (kN)			WEIGHTS (in kg)	
	DN (mm)	NPS in (inch)	NPS in (mm)	B	C	D	E	Q	R	T	COMPRESSIVE	LIFTING	LATERAL (SEE NOTES)		kg
													H=100	H=150	
T-SH-826-0300	DN 300	12"	323.8	200	*	150	*	80	168	15	0,75 x DIM A	100	70	63	TBA
T-SH-826-0350	DN 350	14"	355.6	250	*	200	*	80	184	15	1,0 x DIM A	100	70	63	TBA
T-SH-826-0400	DN 400	16"	406.4	250	*	200	*	80	209	15	1,0 x DIM A	100	70	63	TBA
T-SH-826-0450	DN 450	18"	457.2	250	*	200	*	80	235	15	1,25 x DIM A	100	70	63	TBA
T-SH-826-0500	DN 500	20"	508.0	300	*	250	*	85	260	20	1,25 x DIM A	100	70	63	TBA
T-SH-826-0600	DN 600	24"	609.6	300	*	250	*	85	311	20	1,25 x DIM A	100	70	63	TBA
T-SH-826-0700	DN 700	28"	711.2	400	*	350	*	85	362	20	1,75 x DIM A	100	70	63	TBA
T-SH-826-0750	DN 750	30"	762.0	400	*	350	*	85	387	20	1,75 x DIM A	100	70	63	TBA
T-SH-826-0800	DN 800	32"	812.8	450	*	400	*	85	412	20	2,0 x DIM A	100	70	63	TBA
T-SH-826-0900	DN 900	36"	914.4	450	*	400	*	85	463	20	2,0 x DIM A	100	70	63	TBA

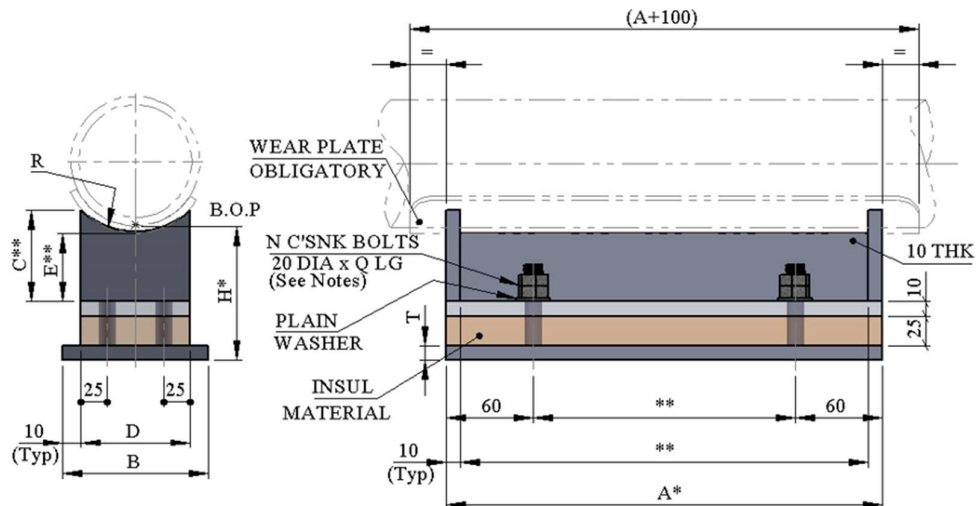
This shoe is to be used in conjunction with a wearplate.
 Shoe construction / insulation material shall be subject to project approval.
 All welds to be a= 0.7 x WT , but max 4mm CFW
 Blocks must be supported over at least 25% of base.
 This shoe to be used for lines with an anchor , line stop or high guide load restraints.
 Bolts to be according to ISO 10642 SS A4 80 (Full Threaded), & Nuts SS A4 80
 STD type includes all bolts , plain washers and double nuts. bolts to have a minimum over length of 3 threads.
 Bolting Length (DIM Q) : Refer back to nearest standard shoe sizes.
 Bolting No. off : if distance between bolts exceeds approx. 400mm , add another set of bolts.
 For standard shoe sizes See SH-119, SH-120 , SH-121 & SH-419, SH-420 ,SH-421
 Only dimension marked * (Length & Height) can vary from standard shoe sizes. Dim A to be above 500mm.
 Other effected dimensions marked ** to be calculated.
 Extrapolate lateral and loads for other Dim H sizes.

21.15 SPECIAL COLD SERVICE WELDED SHOE FOR CS, SS & ALLOY LINES
50- 250mm / 2"- 10" , (LENGTH & HEIGHT DEFINABLE)
SH - 933


TYPICAL PART NUMBER	AVAILABLE MATERIAL SHORT CODE	STD DETAIL TEMPERATURE LIMITATION	
		MAX. DESIGN TEMP	MIN. DESIGN TEMP
T-SH-933-(DN)-SS/CS #A=(DIM)H=(DIM) (CS BOTTOM PL)	SS/CS	160 °C	(-) 196 °C
T-SH-933-(DN)-SS#A=(DIM)H=(DIM)	SS	160 °C	(-) 196 °C

TYPE	LINE SIZE			SHOE DIMENSIONS								MAX SAFE WORKING LOAD FOR BLOCK (kN)				WEIGHTS (in kg)
												COMPRESSION	LIFTING	LATERAL (SEE NOTES)		
	DN (mm)	NPS in (inch)	NPS in (mm)	B	C	D	G	N	P	Q	R			H=100	H=150	
T-SH-933-0050	DN 50	2"	60.3	120	*	100	40	20	16	75	36	0,5 x DIM A	65	45	40	TBA
T-SH-933-0080	DN 80	3"	88.9	120	*	100	80	20	16	75	51	0,5 x DIM A	65	45	40	TBA
T-SH-933-0100	DN 100	4"	114.3	120	*	100	100	20	16	75	63	0,5 x DIM A	65	45	40	TBA
T-SH-933-0125	DN 125	5"	141.3	120	*	100	100	20	16	75	76	0,5 x DIM A	65	45	40	TBA
T-SH-933-0150	DN 150	6"	168.3	120	*	100	100	20	16	75	90	0,5 x DIM A	65	45	40	TBA
T-SH-933-0200	DN 200	8"	219.1	120	*	100	100	20	16	75	116	0,5 x DIM A	65	45	40	TBA
T-SH-933-0250	DN 250	10"	273.0	170	*	150	150	25	20	80	143	0,75 x DIM A	100	70	63	TBA

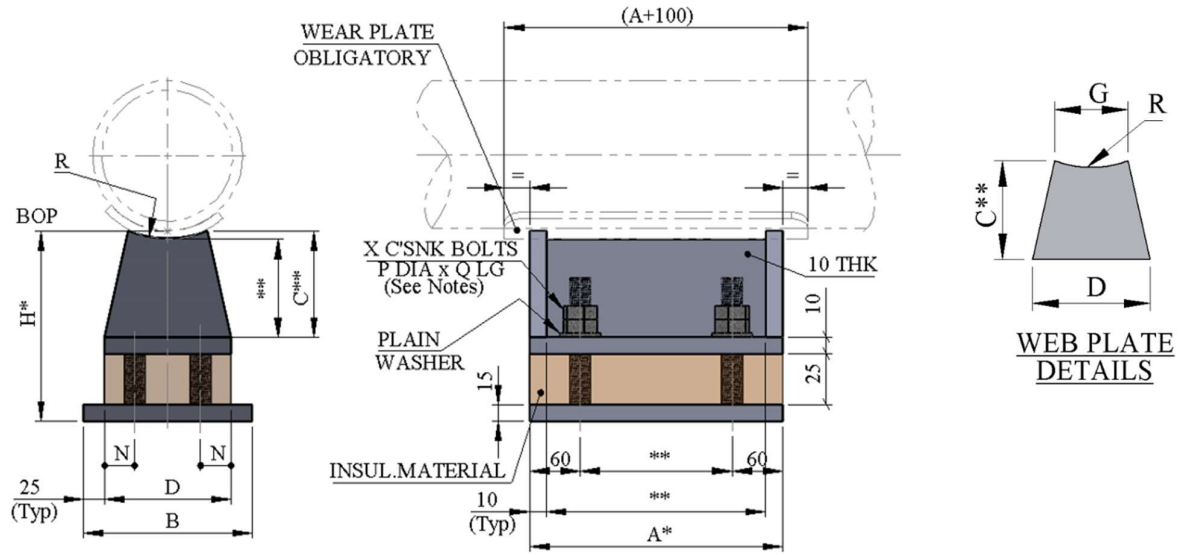
This shoe is to be used in conjunction with a wearplate.
 Shoe construction / insulation material shall be subject to project approval.
 All welds to be a= 0.7 x WT , but max 4mm CFW.
 Blocks must be supported over at least 25% of base.
 This shoe to be used for lines with an anchor , line stop or high guide load restraints.
 Bolts to be according to ISO 10642 SS A4 80 (Full Threaded), & Nuts SS A4 80
 STD type includes all bolts , plain washers and double nuts, bolts to have a minimum over length of 3 threads.
 Bolting Length (DIM Q) : Refer back to nearest standard shoe sizes.
 Bolting Dia (DIM P) : Refer back to nearest standard shoe sizes.
 Bolting No. off (DIM X) : 4 off (DIM A 250 - 349) , 6 off (DIM A 350 – 549) , 8 off (DIM A 550 & above).
 For standard shoe sizes see SH-110, SH-111 , SH-112 & SH-410, SH-411 ,SH-412
 Only dimension marked * (Length & Height) can vary from standard shoe sizes.
 Other effected dimensions marked ** to be calculated.
 Extrapolate lateral loads for other Dim H sizes.

21.16 SPECIAL COLD SERVICE WELDED SHOE FOR CS , SS & ALLOY LINES
300- 900mm / 12" - 36" , (LENGTH & HEIGHT DEFINABLE)
SH -934


TYPICAL PART NUMBER	AVAILABLE MATERIAL SHORT CODE	STD DETAIL TEMPERATURE LIMITATION	
		MAX. DESIGN TEMP	MIN. DESIGN TEMP
T-SH-934-(DN)-SS/CS #A=(DIM)H=(DIM) (CS BOTTOM PL)	SS/CS	60 °C	(-) 196 °C
T-SH-934-(DN)-SS#A=(DIM)H=(DIM)	SS	60 °C	(-) 196 °C

TYPE	LINE SIZE			SHOE DIMENSIONS							SAFE WORKING LOAD (kN) (MAX) (BLOCK)			WEIGHTS (in kg)	
	DN (mm)	NP S in (inc h)	NPS in (mm)	B	C	D	E	Q	R	T	COMPRESSIVE	LIFTING	LATERAL (SEE NOTES)		
													H=100	H=150	kg
T-SH-934-0300	DN 300	12"	323.8	170	**	150	**	80	168	15	0,75 x DIM A	100	70	63	TBA
T-SH-934-0350	DN 350	14"	355.6	220	**	200	**	80	184	15	1,0 x DIM A	100	70	63	TBA
T-SH-934-0400	DN 400	16"	406.4	220	**	200	**	80	210	15	1,0 x DIM A	100	70	63	TBA
T-SH-934-0450	DN 450	18"	457.2	270	**	250	**	80	235	15	1,25 x DIM A	100	70	63	TBA
T-SH-934-0500	DN 500	20"	508.0	270	**	250	**	85	260	20	1,25 x DIM A	100	70	63	TBA
T-SH-934-0600	DN 600	24"	609.6	270	**	250	**	85	311	20	1,25 x DIM A	100	70	63	TBA
T-SH-934-0750	DN 750	30"	762.0	370	**	350	**	85	387	20	1,75 x DIM A	100	70	63	TBA
T-SH-934-0900	DN 900	36"	914.4	420	**	400	**	85	463	20	2,0 x DIM A	100	70	63	TBA

This shoe is to be used in conjunction with a wear plate.
 Shoe construction / insulation material shall be subject to project approval.
 All welds to be $a = 0.7 \times WT$, but max 4mm CFW.
 Blocks must be supported over at least 25% of base.
 This shoe to be used for lines with an anchor, line stop or high guide load restraints.
 Bolts to be according to ISO 10642 SS A4 80 (Full Threaded), & Nuts SS A4 80
 STD Type includes all bolts, plain washers and double nuts. bolts to have a minimum over length of 3 threads.
 Bolting length (DIM Q) : Refer back to nearest standard shoe sizes.
 Bolting No. off (DIM N) : 4 off (DIM A 250 - 349), 6 off (DIM A 350 - 549), 8 off (DIM A 550 & above).
 For standard shoe sizes see SH-113, SH-114, SH-115 & SH-413, SH-414, SH-415.
 Only dimension marked * (Length & Height) can vary from standard shoe sizes.
 Other effected dimensions marked ** to be calculated.
 Extrapolate lateral loads for other Dim H sizes

21.17 SPECIAL COLD SERVICE WELDED SHOE FOR CS , SS & ALLOY LINES
50- 250mm / 2" - 10" , (LENGTH & HEIGHT DEFINABLE)
SH - 935


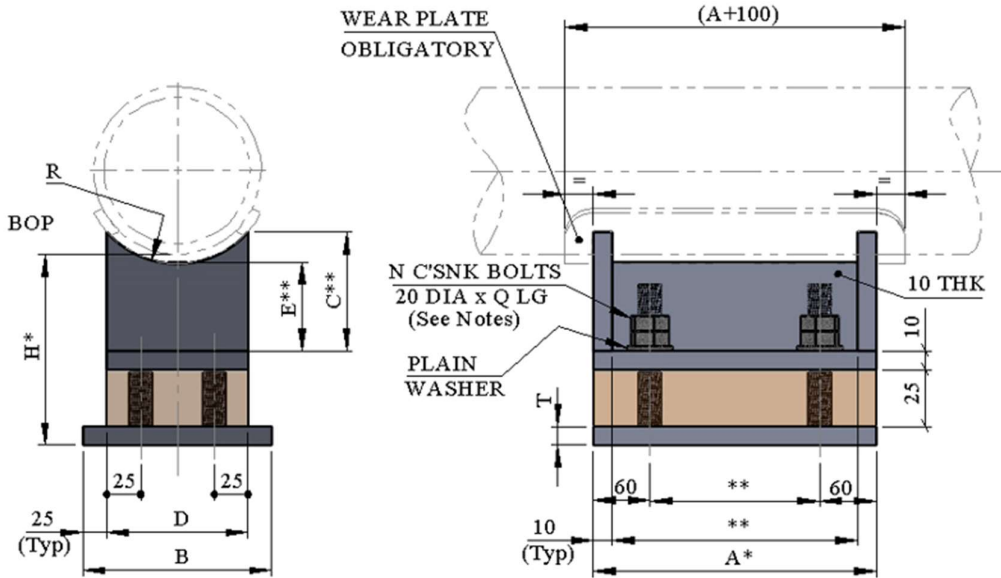
TYPICAL PART NUMBER	AVAILABLE MATERIAL SHORT CODE	STD DETAIL TEMPERATURE LIMITATION	
		MAX. DESIGN TEMP	MIN. DESIGN TEMP
T-SH-935-(DN)-SS/CS #A=(DIM)H=(DIM) (CS BOTTOM PL)	SS/CS	160 °C	(-) 196 °C
T-SH-935-(DN)-SS#A=(DIM)H=(DIM)	SS	160 °C	(-) 196 °C

TYPE	LINE SIZE			SHOE DIMENSIONS								SAFE WORKING LOAD (kN) (MAX) (BLOCK)				WEIGHTS (in kg)	
												COMPRESSION	LIFTING (SEE NOTES)		LATERAL (SEE NOTES)		
	DN (mm)	NPS in (inch)	NPS in (mm)	B	C	D	G	N	P	Q	R		A=300 & 400	A=500	H=100		H=150
T-SH-935-0050	DN 50	2"	60.3	150	*	100	40	20	16	90	36	0,5 x DIM A	65	100	45	40	TBA
T-SH-935-0080	DN 80	3"	88.9	150	*	100	80	20	16	90	51	0,5 x DIM A	65	100	45	40	TBA
T-SH-935-0100	DN 100	4"	114.3	150	*	100	100	20	16	90	63	0,5 x DIM A	65	100	45	40	TBA
T-SH-935-0125	DN 125	5"	141.3	150	*	100	100	20	16	90	76	0,5 x DIM A	65	100	45	40	TBA
T-SH-935-0150	DN 150	6"	168.3	150	*	100	100	20	16	90	90	0,5 x DIM A	65	100	45	40	TBA
T-SH-935-0200	DN 200	8"	219.1	150	*	100	100	20	16	90	116	0,5 x DIM A	65	100	45	40	TBA
T-SH-935-0250	DN 250	10"	273.0	200	*	150	150	25	20	100	143	0,75 x DIM A	100	150	70	63	TBA

This shoe is to be used in conjunction with a wear plate.
 Shoe construction / insulation material shall be subject to project approval.
 All welds to be a= 0.7 x WT , but max 4mm CFW.
 Blocks must be supported over at least 25% of base.
 This shoe to be used for lines with an anchor , line stop or high guide load restraints.
 Bolts to be according to ISO 10642 SS A4 80 (Full Threaded), & Nuts SS A4 80
 STD type includes all bolts , plain washers and double nuts. bolts to have a minimum over length of 3 threads.
 Bolting length (DIM Q) : Refer back to nearest standard shoe sizes.
 Bolting Dia (DIM P) : Refer back to nearest standard shoe sizes.
 Bolting No. off (DIM X) : 4 off (DIM A 250 - 349) , 6 off (DIM A 350 - 549) , 8 off (DIM A 550 & above).
 For standard shoe sizes see SH-116, SH-117 , SH-118 & SH-416, SH-417 ,SH-418
 Only dimension marked * (Length & Height) can vary from standard shoe sizes.
 Other effected dimensions marked ** to be calculated.
 Extrapolate lateral and lifting loads for other Dim A and H sizes.

21.18 SPECIAL COLD SERVICE WELDED SHOE FOR CS, SS & ALLOY LINES
300- 900mm / 12" - 36" , (LENGTH & HEIGHT DEFINABLE)

SH - 936



TYPICAL PART NUMBER	AVAILABLE MATERIAL SHORT CODE	STD DETAIL TEMPERATURE LIMITATION	
		MAX. DESIGN TEMP	MIN. DESIGN TEMP
T-SH-936-(DN)-SS/CS #A=(DIM)H=(DIM) (CS BOTTOM PL)	SS/CS	160 °C	(-) 196 °C
T-SH-936-(DN)-SS#A=(DIM)H=(DIM)	SS	160 °C	(-) 196 °C

TYPE	LINE SIZE			SHOE DIMENSIONS							MAX SAFE WORKING LOAD (kN) (MAX) (BLOCK)			WEIGHTS (in kg)	
	DN (mm)	NPS in (inch)	NPS in (mm)	B	C	D	E	Q	R	T	COMPRESSIVE	LIFTING	LATERAL (SEE NOTES)		
													H=100	H=150	kg
T-SH-936-0300	DN 300	12"	323.8	200	**	150	**	100	168	15	0,75 x DIM A	100	70	63	TBA
T-SH-936-0350	DN 350	14"	355.6	250	**	200	**	100	184	15	1,0 x DIM A	100	70	63	TBA
T-SH-936-0400	DN 400	16"	406.4	250	**	200	**	100	209	15	1,0 x DIM A	100	70	63	TBA
T-SH-936-0450	DN 450	18"	457.2	250	**	200	**	100	235	15	1,25 x DIM A	100	70	63	TBA
T-SH-936-0500	DN 500	20"	508.0	300	**	250	**	105	260	20	1,25 x DIM A	100	70	63	TBA
T-SH-936-0600	DN 600	24"	609.6	300	**	250	**	105	311	20	1,25 x DIM A	100	70	63	TBA
T-SH-936-0700	DN 700	28"	711.2	400	**	350	**	105	362	20	1,75 x DIM A	100	70	63	TBA
T-SH-936-0750	DN 750	30"	762.0	400	**	350	**	105	387	20	1,75 x DIM A	100	70	63	TBA
T-SH-936-0800	DN 800	32"	812.8	450	**	400	**	105	412	20	2,0 x DIM A	100	70	63	TBA
T-SH-936-0900	DN 900	36"	914.4	450	**	400	**	105	463	20	2,0 x DIM A	100	70	63	TBA

This shoe is to be used in conjunction with a wear plate.
 Shoe construction / insulation material shall be subject to project approval.
 All welds to be a= 0.7 x WT , but max 4mm CFW.
 Blocks must be supported over at least 25% of base.
 This shoe to be used for Lines with an anchor , Line Stop or high Guide Load Restraints.
 Bolts to be according to ISO 10642 SS A4 80 (Full Threaded), & Nuts SS A4 80
 STD type includes all bolts , plain washers and double nuts. bolts to have a minimum over length of 3 threads.
 Bolting Length (DIM Q) : Refer back to nearest standard shoe sizes.
 Bolting No. off (DIM N) : 4 off (DIM A 250 - 349) , 6 off (DIM A 350 - 549) , 8 off (DIM A 550 & above).
 For standard shoe sizes see SH-119, SH-120 , SH-121 & SH-419, SH-420 ,SH-421
 Only dimension marked * (Length & Height) can vary from standard shoe sizes. Dim A to be above 500mm.
 Other effected dimensions marked ** to be calculated.
 Extrapolate lateral Loads for other Dim H sizes